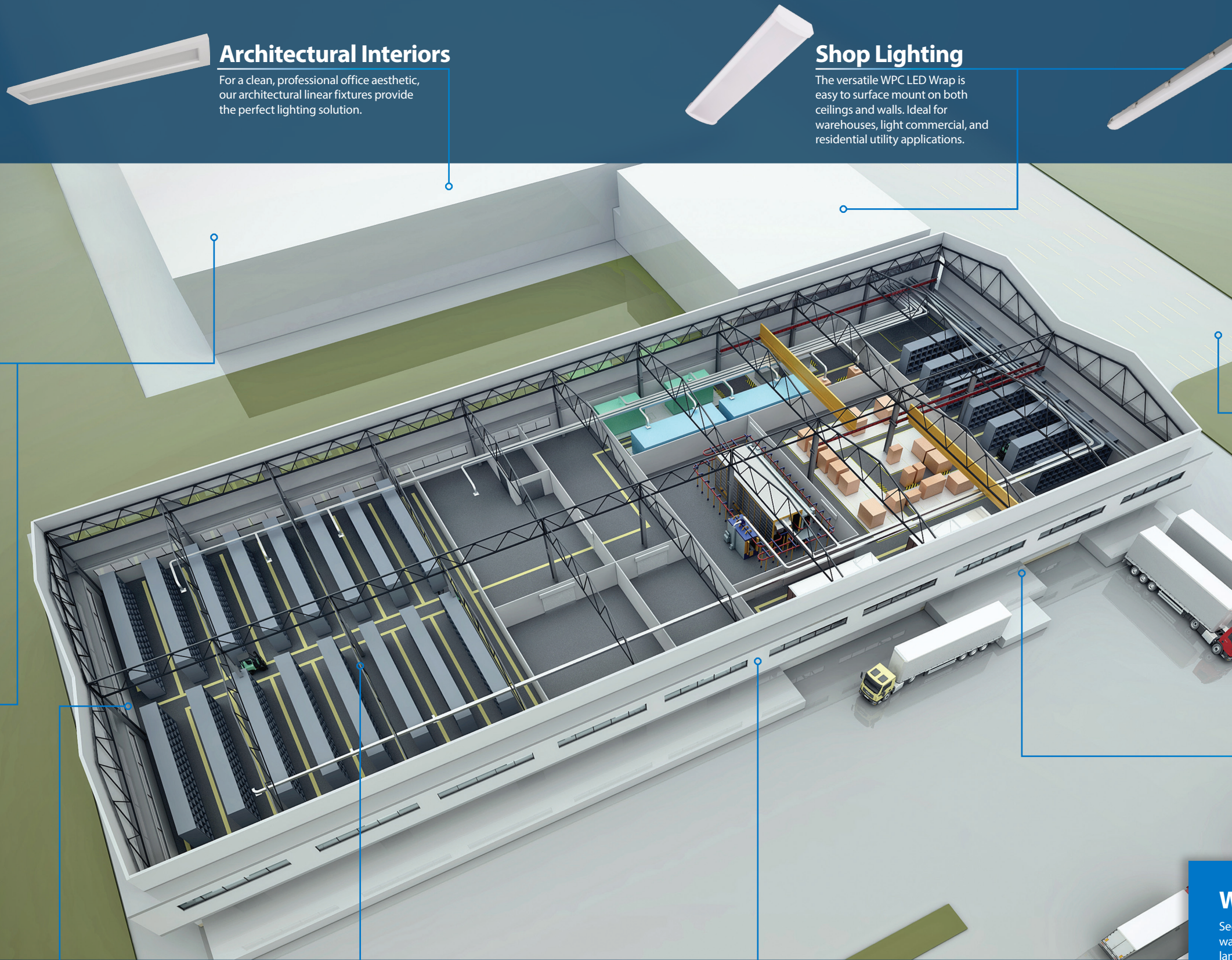


Warehouse Lighting

High/Low Bay & Site Completion Guide



NICOR® Warehouse Overview



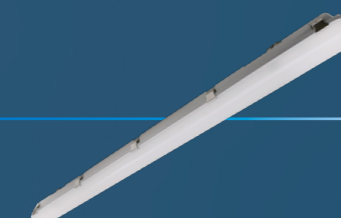
Architectural Interiors

For a clean, professional office aesthetic, our architectural linear fixtures provide the perfect lighting solution.



Shop Lighting

The versatile WPC LED Wrap is easy to surface mount on both ceilings and walls. Ideal for warehouses, light commercial, and residential utility applications.



Enclosed Vaportites

Dust, water, and vapor are no match for the VT3. Light your woodworking area, machine shop, shower room, and more with our vapor tight products.



Troffers

Office lighting is key to productivity. Our troffers provide economical illumination for interior spaces.

Parking

Choose our OAL Area Lighting family of products for parking lots. We also carry a variety of luminaires for covered parking areas.

Commercial Downlights

See our full line of downlights to complete any office, warehouse, and even exterior patio locations. NICOR offers a wide selection of commercial grade downlights to accommodate any ceiling height



Dock Light

Add light right where you need it for loading and unloading shipments with the UDL Dock Light.

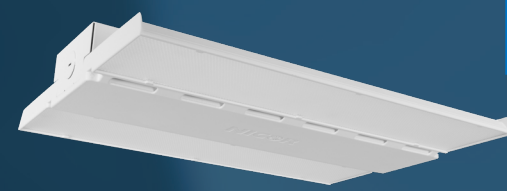


Emergency

Meet egress requirements and provide safety for employees with our wide variety of emergency lighting fixtures.

High Bays

High/Low bays are designed for warehouse environments. Utilize the HML for aisle lighting and reduce fixture count.



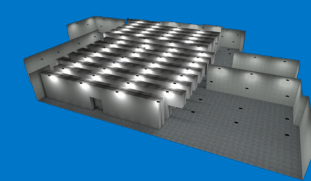
Outdoor

Illuminate walkways with the OWG or add lighting to the surrounding landscape with our large selection of outdoor lights.



Warehouse Site Lighting

See how NICOR can assist with completing your warehouse layout. From interiors to exteriors and landscape lighting, we'll exceed your standards. To help finalize the best light and quantities for your project, give us a call at 505-343-5390 and we can run a layout to determine the number of lights you need.



For more information see page 23

Warehouse Starter Kit



Complete Your Project With NICOR

NICOR's wide variety of lighting solutions makes it easy to complete your project from top to bottom. From high-performance industrial high bays to rugged and durable outdoor fixtures, NICOR carries everything you need to outfit your project. When you choose NICOR, you choose a single source to meet all your lighting needs.



HML

HBG

HBL

HBC

Benefits



99% of Orders
Ship within 24 Hours



Let us do the heavy lifting. If your project involves a complex floor plan, NICOR's engineers can create a detailed model of your space.



Warehouse locations nationwide. Our experienced team of engineers and sales representatives deliver the highest level of customer support.

Customize Your Kit

Exits & Emergency



EML7



EXL5



EXL6



ECL3

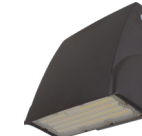


ECL5

Exterior & Landscape



ODL4



OSA4



OWG



OWR



OWCR



OWCQ

Site/Parking



OAL



OUC

Utility Lighting



UDL

Interior Office



TACS



TGLS



Paragon



CLR



LSA



LSE



LSQ

Interior Shop



WPC



LSCS



LS1

Enclosed Vaportites



VT2



VT3

NICOR | select

Adjusts to your life

Make lighting easy with the flip of a switch. Simplify your installations using fixtures that can be adjusted on the fly. Depending on the product, NICOR select fixtures, indicated by an icon, are available with CCT and/or wattage options.

HML1

Cast Aluminum Housing

Allows operation up to 55°C with integrated cooling features

Lens Options

Diffused lens reduces glare. Wide and Aisle options are designed to reduce fixture count.

HML1 LED HIGH-PERFORMANCE HIGH BAY

Introducing the newest high bay product line: the patent pending, ultra-efficient, high-performance HML high bay. With only a 10x14" footprint (on lower wattages), its compact design offers an impressive light output with simple, single-person installation. The DLC 5.1 Premium certified fixture offers a variety of wattage, sensor, and aisle distribution options. Its durable single-piece cast aluminum design is perfect for rugged applications like warehouses, gymnasiums, and other industrial or commercial spaces.

10x14" Footprint

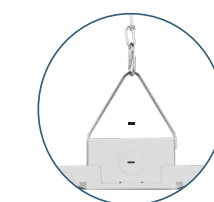
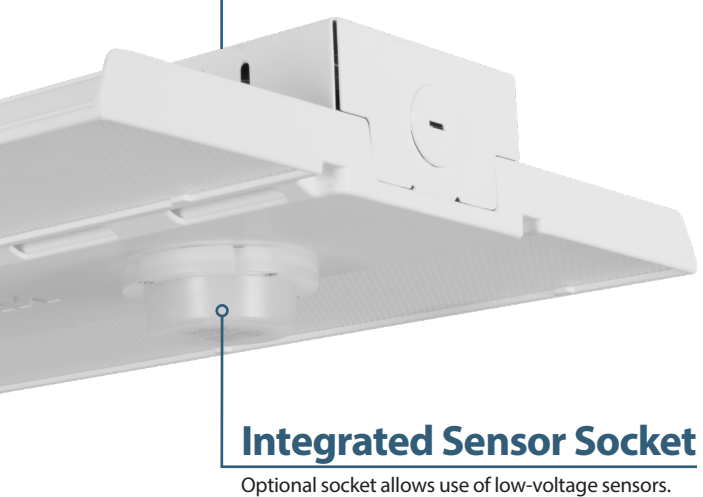
Compact design offers impressive light output with simple, single-person installation.

Integrated Sensor Socket

Optional socket allows use of low-voltage sensors.

Hassle-Free Mounting

Easy mounting with chain and hook or optional surface and pendant mount kits.



Performance Data Standard + Wide

Model #	Lumens	Watts	LPW
HML1100U40A	14200		141
HML1100U50A	14284	101	141
HML1130U40A	18138		141
HML1130U50A	18228	129	141
HML1150U40A	20574		140
HML1150U50A	20675	147	141
HML1210U40A	29258		140
HML1210U50A	29412	209	141
HML1300U40A	42055		137
HML1300U50A	42266	305	138
HML1450U40A	66516		144
HML1450U50A	66850	459	145

Performance Data Aisle

Model #	Lumens	Watts	LPW
HML1150U40C	19134		130
HML1150U50C	19228	147	131
HML1210U40C	27204		130
HML1210U50C	27338	209	131
HML1300U40C	39251		131
HML1300U50C	39307	305	131
HML1450U40C	61860		134
HML1450U50C	62171	459	135



*Only 90° x 90° distribution will meet DLC Premium.



Applications: Warehouses, gymnasiums, and other industrial or commercial spaces

Photometric Data

100W 5000K

Input Voltage (VAC)	120-277
System Level Power (W)	101
Delivered Lumens (Lm)	14284
System Efficacy (Lm/W)	141
Correlated Color Temp (K)	5000
Color Rendering Index (CRI)	86
Beam Angle (0)	89.1°
Beam Angle (90)	90.6°
Spacing Criteria (0)	1.26
Spacing Criteria (90)	1.26

130W 5000K

Input Voltage (VAC)	120-277
System Level Power (W)	129
Delivered Lumens (Lm)	18228
System Efficacy (Lm/W)	141.3
Correlated Color Temp (K)	5000
Color Rendering Index (CRI)	86
Beam Angle (0)	89°
Beam Angle (90)	90.6°
Spacing Criteria (0)	1.26
Spacing Criteria (90)	1.26

150W 5000K

Input Voltage (VAC)	120-277	277-480
System Level Power (W)	147	147
Delivered Lumens (Lm)	20675	20664
System Efficacy (Lm/W)	140.6	140.6
Correlated Color Temp (K)		5000
Color Rendering Index (CRI)		86
Beam Angle (0)		88.9°
Beam Angle (90)		90.6°
Spacing Criteria (0)		1.26
Spacing Criteria (90)		1.26

210W 5000K

Input Voltage (VAC)	120-277	277-480
System Level Power (W)	209	
Delivered Lumens (Lm)	29412	29396
System Efficacy (Lm/W)	141	141
Correlated Color Temp (K)		5000
Color Rendering Index (CRI)		85
Beam Angle (0)		88.7°
Beam Angle (90)		90.5°
Spacing Criteria (0)		1.28
Spacing Criteria (90)		1.26

300W 5000K

Input Voltage (VAC)	120-277	277-480
System Level Power (W)	305	
Delivered Lumens (Lm)	42266	42243
System Efficacy (Lm/W)	139	139
Correlated Color Temp (K)		5000
Color Rendering Index (CRI)		86
Beam Angle (0)		88.9°
Beam Angle (90)		90.6°
Spacing Criteria (0)		1.28
Spacing Criteria (90)		1.26

450W 5000K

Input Voltage (VAC)	120-277	277-480
System Level Power (W)		459
Delivered Lumens (Lm)	66850	66783
System Efficacy (Lm/W)	145	145
Correlated Color Temp (K)		5000
Color Rendering Index (CRI)		86
Beam Angle (0)		88.9°
Beam Angle (90)		90.6°
Spacing Criteria (0)		1.28
Spacing Criteria (90)		1.26

Ordering Information

Series	Version	Wattage	Input Voltage	CCT	Distribution	Sensor Socket	Emergency	Wiring Options
HML	1	100 (14000 lm)	U (120-277V)	40 (4000K)	A (90°x90°)	Blank (No)	Blank (No)	Blank (No)
		130 (18000 lm)	H (277-480V) ¹	50 (5000K)	B (105°x105°)	S (Socket)	E08 (8W)	C (Cord-3-wire, 6ft) ³
		150 (20000 lm)			C (45°x100°) ²		E18 (18W)	C4 (Cord-4-wire, 6ft) ^{3,4}
		210 (29000 lm)					E25 (25W)	F (Flex Conduit - 6ft)
		300 (42000 lm)					E40 (40W)	
		450 (66000 lm)						

Example: HML1100U40AS

Specifications and dimensions subject to change without notice. 1) HV available on 150W, 210W, 300W, 450W at 5000K only. Consult manufacturer for other models. 2) Aisle distribution is only available for 150W and up. 3) C3 cord is 18/3 wire, 6' long, black. Other lengths available upon request. 4) Flexible metal conduit is 6' long, 18/3 wire configuration. Other lengths available upon request.

*NLC Compatible, see page 22 for details.

Accessories



HML2

Cast Aluminum Housing

Allows operation up to 55°C with integrated cooling features

Lens Options

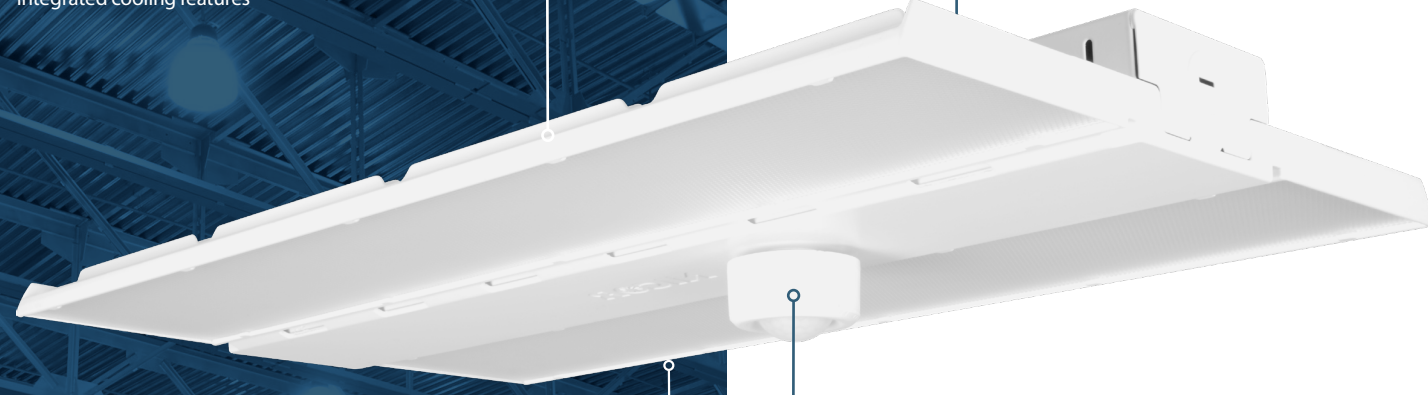
Diffused lens reduces glare. Wide and Aisle options are designed to reduce fixture count.

HML2 LED HIGH-PERFORMANCE HIGH BAY

NICOR introduces the newest high bay product line: the patent pending, ultra-efficient, high performance HML2 high bay. With only a 12.6"x23" footprint its compact design offers an impressive light output with simple, single-person installation. The DLC 5.1 Premium certified fixture offers selectable wattage (320/270/220W), sensor, and aisle distribution options. It's durable single-piece cast aluminum design is perfect for rugged applications like warehouses, gymnasiums, and other industrial or commercial spaces.

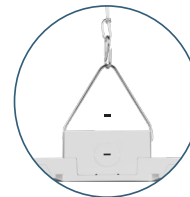
12.6x23" Footprint

Compact design offers impressive light output with simple, single-person installation.



Integrated Sensor Socket

Pre-installed 3.5mm sensor socket.



Hassle-Free Mounting

Easy mounting with chain and hook or optional surface and pendant mount kits.

Performance Data			
Model #	Lumens	Watts	LPW
HML2320U40A	31418	221	142.2
	38242	269	
	45350	319	
HML2320S0A	31582	221	142.9
	38441	269	
	45587	319	



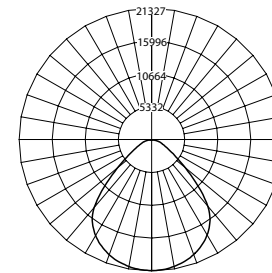
Applications: Warehouses, gymnasiums, and other industrial or commercial spaces



Photometric Data

320W 3500K

Input Voltage (VAC)	120-277
System Level Power (W)	318
Delivered Lumens (Lm)	44304
System Efficacy (Lm/W)	139.3
Correlated Color Temp (K)	3422
Color Rendering Index (CRI)	82
Beam Angle (0)	89.3°
Beam Angle (90)	90.6°
Spacing Criteria (0)	1.26
Spacing Criteria (90)	1.26



Selectable Wattage

Offers selectable power levels: 320W/270W/220W

Ordering Information

Example: HML2320WSU50A

Series	Version	Wattage	Input Voltage	CCT	Distribution	Sensor Socket	Emergency	Wiring Options
HML	2	320WS (320/270/220W)	U (120-277V)	35 (3500K) ⁴	A (90°x90°)	S (Socket)	Blank (No)	Blank (No)
			H (277-480V)	40 (4000K)	B (105°x105°)	E40 (40W)	C3 (Cord-3-wire, 6ft) ¹	
				50 (5000K)	C (45°x100°) ²		C4 (Cord-4-wire, 6ft) ²	
				57 (5700K) ⁴			F (Flex Conduit - 6ft) ³	

Specifications and dimensions subject to change without notice. 1) C3 Cord is 18/3 wire, 6' long, black. Other lengths available upon request. 2) C4 cord is 18/4 wire, 6' long, black, for use with Emergency enabled fixtures. Other lengths available upon request. 3) Flexible metal conduit is 6' long, 18/3 wire configuration. Other lengths available upon request. 4) 3500K & 5700K CCT available as special order.

*NLC Compatible, see page 22 for details.

Accessories



Microwave Sensor



PIR Sensor



NLC PIR Sensor



Wireguard



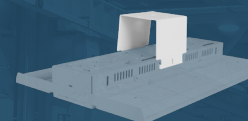
H12V-REMOTE



Aircraft Cable



Pendant Kit



Surface Kit



EM Kit

HML3

Cast Aluminum Housing

Allows operation up to 131° F (55°C) with integrated cooling features

Lens Options

Diffused lens reduces glare. Wide and Aisle options are designed to reduce fixture count.



HML3 LED HIGH-PERFORMANCE HIGH BAY

Introducing NICOR's latest breakthrough in lighting innovation: the HML3 high bay product line. Unveiling a revolutionary design, this patent-pending marvel combines unrivaled efficiency and peak performance. Experience brilliance beyond measure as its compact form yields an extraordinary light output. DLC 5.1 Premium certification attests to its excellence, offering adjustable wattage, CCT (3500K/4000K/5000K/5700K), and sensors. Crafted from single-piece, robust cast aluminum, its durability withstands even the harshest conditions, rendering it ideal for warehouses, gymnasiums, and assorted industrial or commercial settings. With an integrated cooling system and a top-mounted wire-way cover for effortless wire access, the HML3 emerges as the embodiment of streamlined functionality. A polyester powder coat finish crowns its aesthetic, culminating in a luminary masterpiece that seamlessly merges innovation and endurance.

Hassle-Free Mounting

Easy mounting with chain and hook or optional surface and pendant mount kits.

Integrated Sensor Socket

Pre-installed 3.5mm sensor socket allows use of low-voltage lighting controls

Performance Data

Standard Distribution - 150W

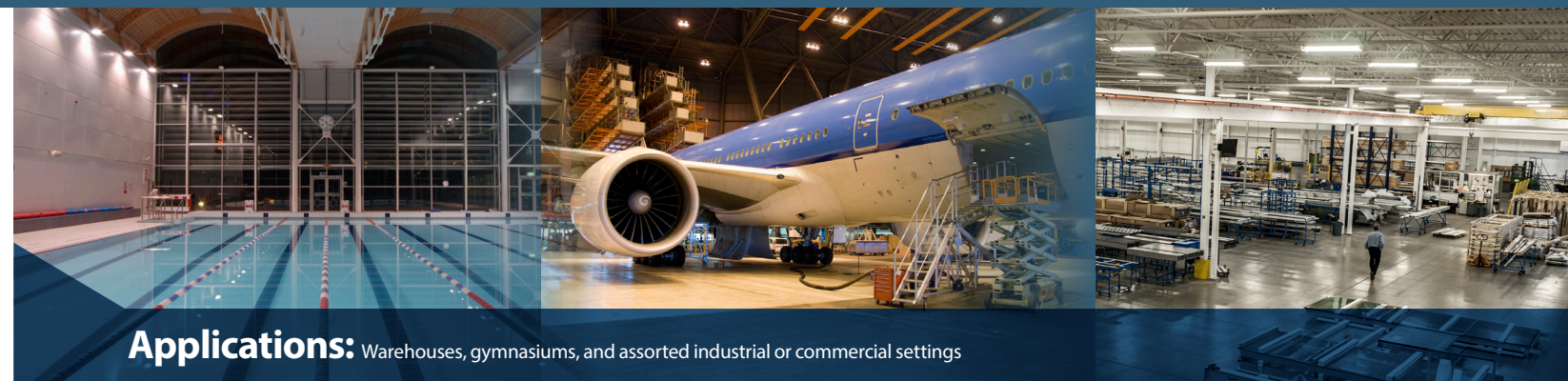
Model #	CCT	Lumens	Watts	LPW
HML3150SUSAS8	3500	13856	100	139
	4000	14386		144
	5000	14179		142
	5700	13956		140
	3500	16627		120
4000	17263	144		
5000	17015	142		
5700	16747	140		
HML3150SHSAS8 (277-480VAC)	3500	20784	150	139
	4000	21579		144
	5000	21269		142
	5700	20934		140

Standard Distribution - 320W

Model #	CCT	Lumens	Watts	LPW
HML3320SUSAS8	3500	31145	220	142
	4000	32130		146
	5000	31824		145
	5700	32160		146
	3500	38224		270
4000	39432	146		
5000	39056	145		
5700	39469	146		
HML3320SHSAS8 (277-480VAC)	3500	45302	315	144
	4000	46734		148
	5000	46289		147
	5700	46778		149
	3500	31526		220
4000	32462	148		
5000	32040	146		
5700	32255	147		
HML3320SHSAS8 (277-480VAC)	3500	38691	270	143
	4000	39839		148
	5000	39322		146
	5700	39586		147
	3500	45856		315
4000	47217	150		
5000	46604	148		
5700	46917	149		



*DLC Premium on A Optic only



Applications: Warehouses, gymnasiums, and assorted industrial or commercial settings

Photometric Data

HML3 150W 5K

Input Voltage (VAC)	120-277
System Level Power (W)	148.4
Delivered Lumens (Lm)	21269
System Efficacy (Lm/W)	143.3
Correlated Color Temp (K)	5106
Color Rendering Index (CRI)	84
Horizontal Beam Angle (°)	88.8°
Vertical Beam Angle (°)	89.9°
Spacing Criteria (0-180)	1.24
Spacing Criterion (90-270)	1.24

HML3 320W 5K

Input Voltage (VAC)	120-277
System Level Power (W)	314.0
Delivered Lumens (Lm)	46289
System Efficacy (Lm/W)	147.4
Correlated Color Temp (K)	5250
Color Rendering Index (CRI)	83
Horizontal Beam Angle (°)	89.8°
Vertical Beam Angle (°)	90.7°
Spacing Criteria (0-180)	1.26
Spacing Criterion (90-270)	1.24

HML3 320W 5K HV

Input Voltage (VAC)	277-480
System Level Power (W)	314.3
Delivered Lumens (Lm)	46603
System Efficacy (Lm/W)	148.3
Correlated Color Temp (K)	5242
Color Rendering Index (CRI)	83
Horizontal Beam Angle (°)	89.8°
Vertical Beam Angle (°)	90.7°
Spacing Criteria (0-180)	1.26
Spacing Criterion (90-270)	1.24

Ordering Information

Series	Version	Wattage Selectable	Input Voltage	CCT Selectable	Distribution	Sensor Socket	CRI	Emergency	Wiring Options
HML	3	150S (150W/120W/100W)	U (120-277V)	S (35K/40K/50K/57K)	A (General - 90°x90°)	S (With Socket)	8 (80 CRI)	Blank	Blank
					B (Wide - 105°x105°)				
		320S (320W/270W/220W)	H (277-480V) ^{1,9}	C (Aisle - 45°x100°)	E18 (18W) ^{2,5}	C (Cord-3-wire, 6ft) ⁶			
								E25 (25W) ^{3,5}	C4 (Cord-4-wire, 6ft) ⁷
								E40 (40W) ^{4,5}	F (Flex Conduit - 6ft) ⁸

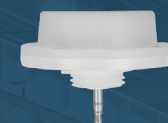
Example: HML3320WSUSAS

Specifications and dimensions subject to change without notice.

(Note: End user is responsible for proper selection of battery pack to meet NFPA requirements) 1.) High Voltage not available on 150W model 2.) 18W Emergency Pack is for 150W models only 3.) 25W Emergency Pack is for all models 4.) 40W Emergency Pack is for 320W model only 5.) Emergency not available on HV fixtures 6.) C Cord is 18/3 wire, 6' long, black. Other lengths available upon request 7.) C4 cord is 18/4 wire, 6' long, black, for use with Emergency enabled fixtures. Other lengths available upon request 8.) Flexible metal conduit is 6' long, 18/3 wire configuration. Other lengths available upon request 9.) Contact factory for lead-time

*NLC Compatible, see page 22 for details.

Accessories



Microwave Sensor



PIR Sensor



NLC PIR Sensor



Wireguard



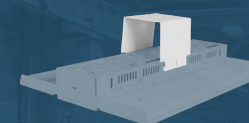
H12V-REMOTE



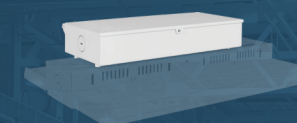
Aircraft Cable



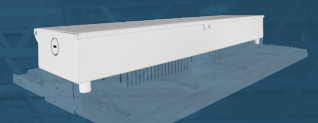
Pendant Kit



Surface Kit



EM Kits



HBC4

Flat Optic Lens

Standard 90° optic to reduce glare

Hassle-Free Mounting

Mounting hook with locking bolt included for rapid installation

Reflectors

Optional reflectors available in aluminum and polycarbonate protect against indirect glare



Cast Aluminum Housing

Meets NSF rating and allows operation up to 50°C. Vented aluminum heatsink provides superior cooling while reducing fixture weight

Driver & LEDs

Provides long-lasting, efficient performance with uniform color and smooth distribution

HBC4 High-Performance LED High-Bay

The HBC LED Circular Low Bay/High Bay is a high-performance fixture that produces an output greater than 135 lumens per watt, includes an integrated socket for a field install motion sensor, 90-degree optic, and excellent color rendering at >80CRI. The die-cast aluminum heatsink design allows for a lightweight unit and with the multiple mounting options and accessories, the fixture can address a variety of applications. With consistent light distribution, this fixture is perfect for environments such as grocery stores, gymnasiums, big-box retail, and warehouse spaces.

Performance Data

Model #	Lumens	Watts	LPW
HBC4100U408	14945	102	147
HBC4100U508	15157	102	149
HBC4150U408	21549	142	152
HBC4150U508	21851	144	152
HBC4200U408	27998	200	140
HBC4200U508	28396	200	142
HBC4240U408	34446	241	143
HBC4240U508	34935	241	145
HBC4300U408	40557	297	137
HBC4300U508	41133	297	139
HBC4400U408	53747	392	137
HBC4400U508	54510	392	139

Fixture tested per LM-79-08. Photometric data is the performance of a representative fixture. Results may vary in the field.



Applications: Hangers, warehousing, and storage facilities

Photometric Data

100W 5000K

Input Voltage (VAC)	120-277
System Level Power (W)	102
Delivered Lumens (Lm)	15157
System Efficacy (Lm/W)	148.6
Correlated Color Temp (K)	5072
Color Rendering Index (CRI)	82
Beam Angle	88.8°
Spacing Criteria	1.34

150W 5000K

Input Voltage (VAC)	120-277
System Level Power (W)	151.7
Delivered Lumens (Lm)	21851
System Efficacy (Lm/W)	144
Correlated Color Temp (K)	5078
Color Rendering Index (CRI)	84
Beam Angle	88.3°
Spacing Criteria	1.39

200W 5000K

Input Voltage (VAC)	120-277
System Level Power (W)	199.9
Delivered Lumens (Lm)	28396
System Efficacy (Lm/W)	142.1
Correlated Color Temp (K)	4995
Color Rendering Index (CRI)	84
Beam Angle	88.8°
Spacing Criteria	1.28

240W 5000K

Input Voltage (VAC)	120-277
System Level Power (W)	241.4
Delivered Lumens (Lm)	34935
System Efficacy (Lm/W)	144.7
Correlated Color Temp (K)	5091
Color Rendering Index (CRI)	84
Beam Angle	87.5°
Spacing Criteria	1.28

300W 5000K

Input Voltage (VAC)	120-277
System Level Power (W)	296.7
Delivered Lumens (Lm)	41133
System Efficacy (Lm/W)	138.6
Correlated Color Temp (K)	5026
Color Rendering Index (CRI)	84
Beam Angle	85.3°
Spacing Criteria	1.41

400W 5000K

Input Voltage (VAC)	120-277
System Level Power (W)	392.3
Delivered Lumens (Lm)	54510
System Efficacy (Lm/W)	138.9
Correlated Color Temp (K)	5104
Color Rendering Index (CRI)	82
Beam Angle	81.1°
Spacing Criteria	1.38

Ordering Information

Example: HBC4240U408BK

Series	Version	Wattage	Voltage	CCT's	CRI	Finish
HBC	4	100 (102W - 15000 lm)	U (120-277VAC)	40 (4000K)	8 (80+)	BK (Black)
		150 (152W - 21500 lm)	H (277-480VAC)	50 (5000K)		WH (White)
		200 (200W - 28000 lm)				
		240 (241W - 34500 lm)				
		300 (297W - 40500 lm)				
		400 (392W - 53700 lm)				

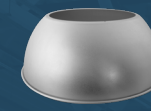
Specifications and dimensions subject to change without notice.

*NLC Compatible, see page 22 for details.

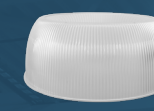
Accessories



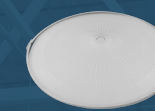
Wire Guard



90° Aluminum Reflector



90° Polycarbonate



Glare Shield



Pendant Mount Adapter



EMB400



HBC4REMOTE



U-Bracket



PIR Sensor



Microwave Motion Sensor

HBC5

Effortless Installation

Mounting hook with locking bolt included for secure installation. Optional Pendant and Yoke mounts are also available.



Selectable CCT



Selectable Wattages



Performance Data

Model #	Normal Operation				40W EM
	CCT	Lumens	Watts	LPW	Lumens
HBC5150SUS8	3500	13396		134	5358
	4000	14472	100	145	5789
	5000	13561		136	5424
	3500	16075		134	5358
	4000	17366	120	145	5789
	5000	16274		136	5424
HBC5240SUS8	3500	20094		134	5358
	4000	21708	150	145	5789
	5000	20342		136	5424
	3500	27183		136	5437
	4000	29140	200	146	5828
	5000	27545		138	5509
HBC5240SUS8	3500	29901		136	5437
	4000	32054	220	146	5828
	5000	30300		138	5509
	3500	32619		136	5437
	4000	34968	240	146	5828
	5000	33054		138	5509

Fixture tested per LM-79-08. Photometric data is the performance of a representative fixture. Results may vary in the field.



Die-Cast Aluminum Housing

Vented aluminum heatsink provides superior cooling while reducing fixture weight

Optic Lens

Includes 90° flat polycarbonate optic standard.

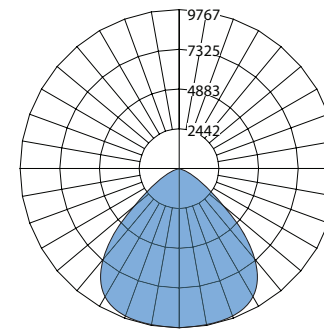


Applications: Warehouses, retail stores, gymnasiums, and other large indoor spaces.

Photometric Data

150W 5000K

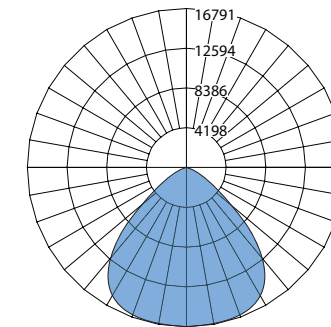
Input Voltage (VAC)	120-277
System Level Power (W)	150.1
Delivered Lumens (Lm)	20342
System Efficacy (Lm/W)	135.5
Correlated Color Temp (K)	5131
Color Rendering Index (CRI)	82
Beam Angle	90.8
Spacing Criteria	1.37



150W

240W 5000K

Input Voltage (VAC)	120-277
System Level Power (W)	243.6
Delivered Lumens (Lm)	33540
System Efficacy (Lm/W)	137.7
Correlated Color Temp (K)	5092
Color Rendering Index (CRI)	84
Beam Angle	90.8
Spacing Criteria	1.30



240W

Ordering Information

Series	Version	Wattage	Voltage	CCT's	CRI	Finish
HBC	5	150S (100W/120W/150W)	U (120-277VAC)	S (3500K/4000K/5000K)	8 (80+)	BK (Black)
		240S (200W/220/240W)				WH (White)

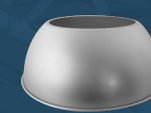
Example: HBC5150SUS8BK

Specifications and dimensions subject to change without notice.

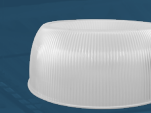
Accessories



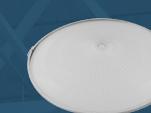
Wire Guard



90° Aluminum Reflector



90° Polycarbonate



Polycarbonate Glare Shield



Pendant Mount Adapter



U-Bracket



PIR Sensor



Microwave Motion Sensor



HBC4REMOTE



Emergency Backup



EM Remote

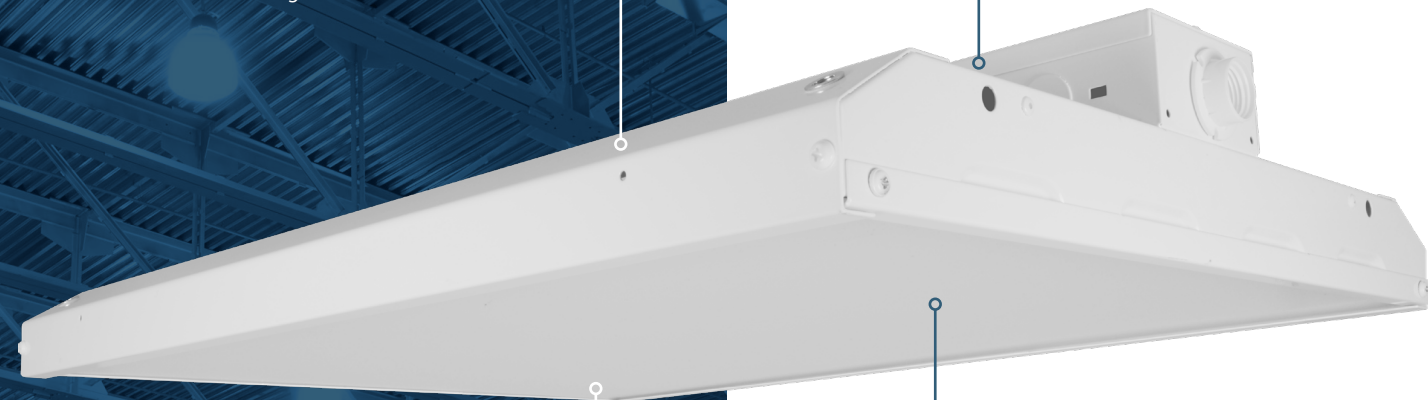


NLC Wireless

HBL4

Rounded Edges

Smooth rounded edges provide safer handling of fixture



Wireway Compartment

Easy access to wiring makes installation hassle-free

Surge Protection

Built-in 10kA surge protection standard, 20kA for high-voltage

Lens Options

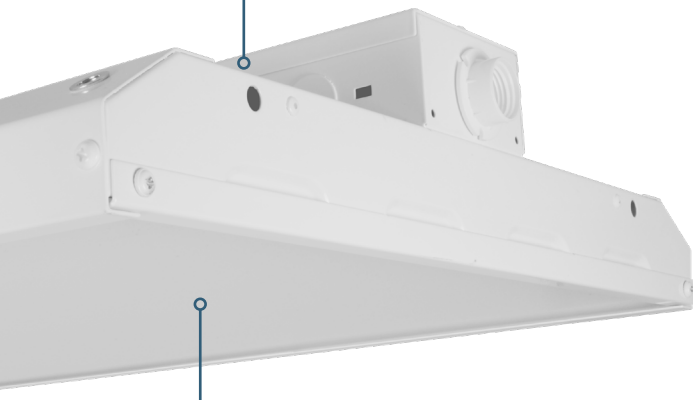
Standard diffused lens to control glare

High Efficacy LEDs

Provides long-lasting, efficient performance with uniform color and light distribution greater than 130 LPW

HBL4 the NICOR Workhorse

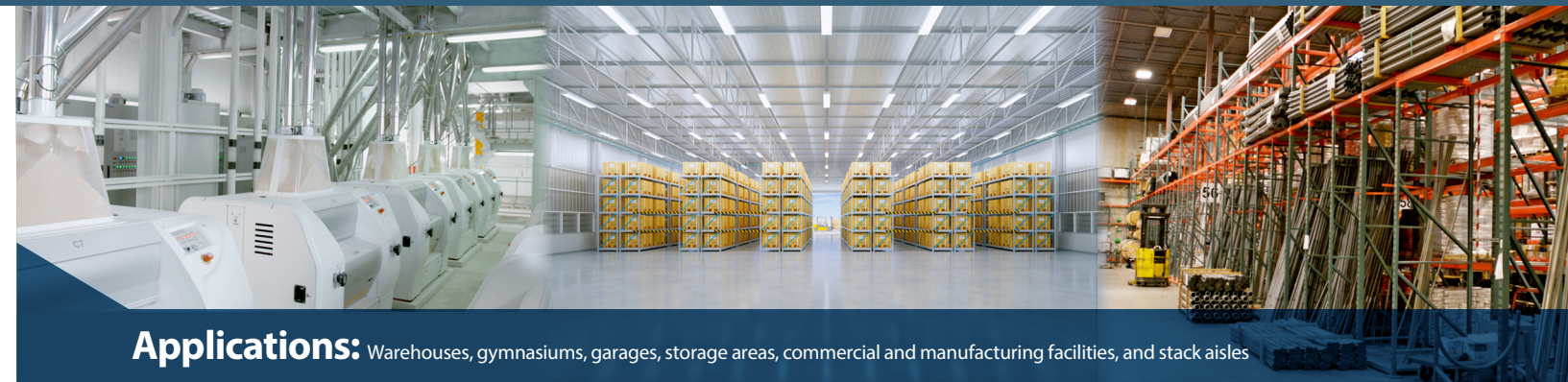
The HBL is the lighting solution for a wide variety of applications and mounting heights. The energy-efficient luminaire offers a long life, even uniformity, and a variety of accessories and options. The economical solution for industrial, commercial, and other high bay applications.



Hassle-Free Mounting

Easy mounting with chain and hook or optional pendant kit

Performance Data				25W Emergency
Model #	Lumens	Watts	LPW	Lumens
HBL4105UV4K	14780	106.0	139.4	3486
HBL4105UV5K	14914		140.7	3517
HBL4155UV4K	21460	154.9	138.5	3463
HBL4155UV5K	21546		139.1	3477
HBL4210UV4K	27302	205.2	133.1	3326
HBL4210UV5K	27550		134.3	3356
HBL4300UV4K	41178	304.8	135.1	3377
HBL4300UV5K	41933		137.6	3439



Applications: Warehouses, gymnasiums, garages, storage areas, commercial and manufacturing facilities, and stack aisles

Photometric Data

105W 5000K

Input Voltage (VAC)	120-277
System Level Power (W)	106.0
Delivered Lumens (Lm)	14914
System Efficacy (Lm/W)	140.7
Correlated Color Temp (K)	5000
Color Rendering Index (CRI)	80
Beam Angle (0)	104.0°
Beam Angle (90)	104.9°
Spacing Criteria (0)	1.26
Spacing Criteria (90)	1.26

155W 5000K

Input Voltage (VAC)	120-277
System Level Power (W)	154.9
Delivered Lumens (Lm)	21546
System Efficacy (Lm/W)	139.1
Correlated Color Temp (K)	5000
Color Rendering Index (CRI)	80
Beam Angle (0)	103.4°
Beam Angle (90)	104.5°
Spacing Criteria (0)	1.26
Spacing Criteria (90)	1.26

210W 5000K

Input Voltage (VAC)	120-277
System Level Power (W)	205.2
Delivered Lumens (Lm)	27550
System Efficacy (Lm/W)	134.3
Correlated Color Temp (K)	5000
Color Rendering Index (CRI)	80
Beam Angle (0)	102.4°
Beam Angle (90)	102.9°
Spacing Criteria (0)	1.24
Spacing Criteria (90)	1.24

300W 5000K

Input Voltage (VAC)	120-277
System Level Power (W)	304.8
Delivered Lumens (Lm)	41933
System Efficacy (Lm/W)	137.6
Correlated Color Temp (K)	5000
Color Rendering Index (CRI)	80
Beam Angle (0)	102.3°
Beam Angle (90)	104.3°
Spacing Criteria (0)	1.26
Spacing Criteria (90)	1.24



15,000Lm



27,500Lm



42,000Lm

Ordering Information

Example: HBL4105UV4KEC

Series	Version	Wattage	Input Voltage	12V Output	CCT's	Sensor	Emergency	Wiring Option
HBL	4	105 (14700 lm)	U (120-277V)	V (12VDC Output)	4K (4000K)	Blank (None)	__ (None)	__ (None)
		155 (21500 lm)	H (347-480V) ⁵		5K (5000K)	P (HBO11-PDX) ⁴	E (EMB250)	C (3-Wire Cord) ²
		210 (27300 lm)				R (MWO360R2) ⁴		C4 (4-Wire Cord) ²
		300 (41000 lm)						F (Flexible Metal Conduit) ³

Specifications and dimensions subject to change without notice. 1.) Field installed plugs are placed inside the carton for eld attachment only. Plug not available on emergency enabled fixtures 2.) Cord is 18/3 wire, 6' long, black. Consult factory for other lengths. 3.) Flexible metal conduit is 6' long, 18/3 wire configuration. Consult factory for other lengths. 4.) Factory installed sensor 5.) H (High Voltage) not available for 300W

*NLC Compatible, see page 22 for details.

Accessories



HBG1

Aisle Optics

The rectangular illumination pattern focuses light for aisles perfectly, reducing the overall number of fixtures required

High Efficacy LEDs

Provides long-lasting, efficient performance; L88 at 60,000 hours, L70>160,000 hours

HBG1 Spec-Grade High Bay

The HBG provides spec-grade optimization with precision-engineered optics, multiple distributions, and a choice of lumen outputs. Up to 180 LPW and aisle distribution to reduce the number of fixtures required; saving labor and cost of luminaires.

Wireway Compartment

Easy access cable connected wireway cover makes installation hassle-free

Surge Protection

Industry leading built-in 10kA surge protection standard

Lens Options

Diffuse lens option provides smooth, even illumination. The No Lens option offers the highest lumen output

**180
LPW**

Fewer Fixtures

With up to 180LPW fewer fixtures are needed

Performance Data 80CRI				70 CRI	
Model #	Lumens	Watts	LPW	Lumens	LPW
HBG116U40#A	16325	101.6	160.7	16771	165.1
HBG116U40#D	15684		154.4	16090	158.4
HBG116U40#N	17378		171.0	17954	176.7
HBG116U50#A	16371	145.3	161.1	16818	165.5
HBG116U50#D	15794		155.5	16203	159.5
HBG116U50#N	17515		172.4	18095	178.1
HBG123U40#A	23266	204.4	160.1	23918	164.6
HBG123U40#D	22499		154.8	23315	160.5
HBG123U40#N	24654		169.7	25797	177.5
HBG123U50#A	23326	176.9	160.4	24073	165.7
HBG123U50#D	22663		156.0	23485	161.6
HBG123U50#N	24813		170.8	25963	178.7
HBG133U40#A	32854	176.0	160.7	33727	165.0
HBG133U40#D	32231		157.7	32731	160.1
HBG133U40#N	35268		172.5	35970	176.0
HBG133U50#A	33219	176.9	162.5	34102	166.8
HBG133U50#D	32396		158.5	32899	161.0
HBG133U50#N	35446		173.4	36152	176.9

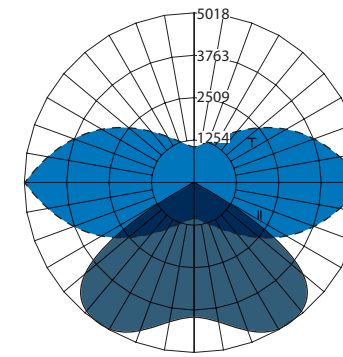


Applications: Aisle racking, manufacturing, and gymnasiums

Photometric Data

HBG123U508A

Input Voltage (VAC)	120-277
System Level Power (W)	145
Delivered Lumens (Lm)	23326
System Efficacy (Lm/W)	160.4
Correlated Color Temp (K)	5000
Color Rendering Index (CRI)	80
Total Harmonic Distortion	<20%
Power Factor	>0.9
Beam Angle (H)	116°
Beam Angle (T)	49°
Spacing Criteria (H)	0.62
Spacing Criteria (T)	1.88

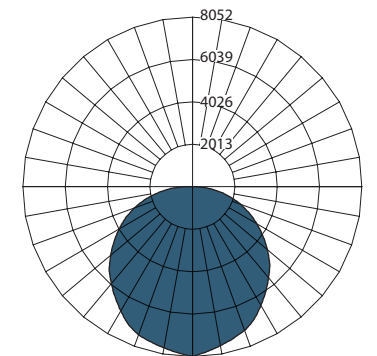


with aisle optics



HBG123U508D

Input Voltage (VAC)	120-277
System Level Power (W)	145
Delivered Lumens (Lm)	22663
System Efficacy (Lm/W)	156
Correlated Color Temp (K)	5000
Color Rendering Index (CRI)	80
Total Harmonic Distortion	<20%
Power Factor	>0.9
Beam Angle (H)	102°
Beam Angle (T)	117°
Spacing Criteria (H)	1.20
Spacing Criteria (T)	1.26



with diffused lens



Ordering Information

Series	Lumens	Voltage	CCT's	CRI	Lens	Sensor	Emergency	Wiring Options	Field Installed Plug Options ⁷
HBG1	16 (16,000 lm, 102W)	U (120-277V)	40 (4000K)	7 (70+) ¹	A (Aisle)	___ (No Sensor)	___ (No EM)	___ (No Cord)	___ (No Plug)
	23 (23,000 lm, 145W)	H (347-480V)	50 (5000K)	8 (80+)	D (Diffuse) ²	P (HB011-PDX)	E3 (EMB250) ⁴	C6 (6 ft cord) ⁵	1 (S15P) 15A 120V Straight Blade
	33 (33,000 lm, 204W)				N (No Lens) ³	R (MWOS360R2)		C10 (10 ft cord) ⁵	2 (L515P) 15A 120V Twist Lock
								F6 (6 ft FMC) ⁶	3 (L615P) 15A 250V Twist Lock
									4 (L715P) 15A 277V Twist Lock
									5 (L720P) 20A 277V Twist Lock
									6 (L2320P) 20A 347V Twist Lock
									7 (L820P) 20A 480V Twist Lock

Specifications and dimensions subject to change without notice. 1) Consult factory. May have extended lead times or MOQ. 2) If field modification is required, diffuse lens will snap over 'A' aisle lens or 'N' no lens options. 3) 'N' (No lens) option is not DLC5.1 qualified. 4) The EMB400 is only available as an accessory providing up to 40W of illumination. The EMB400 hangs above the luminaire and has an integral junction box for wiring. Only available with 120-277V. See EMB400 spec sheet for complete information. 5) Cord is 18/5 wire, 6' or 10' long, black. Other lengths available upon request. 6) Flexible metal conduit is 6' long, 18/5 wire configuration. Other lengths available upon request. 7) Field installed plugs are placed inside the carton for field attachment only. Plug not available with emergency-enabled fixtures. *NLC Compatible, see page 22 for details.

Accessories



Choose your Ideal High/Low Bay

HML1/HML2

This DLC 5.1 Premium certified LED high-performance high bay offers a variety of wattage, sensor, and aisle distribution options. Its durable single-piece cast aluminum design is perfect for rugged applications like warehouses, gymnasiums, and other industrial or commercial spaces.



HBC4

The HBC4 LED Circular Low Bay/High Bay is a high-performance fixture with consistent light distribution. This fixture is perfect for environments such as grocery stores, gymnasiums, big box retail, and warehouse spaces.



HBL4

The perfect mid-range option offering an economical choice packaged with high performance. Designed with energy efficiency in mind, it meets DLC premium standards while providing excellent color rendering and even uniformity. Excellent for retrofits when replacing one-for-one older technology luminaires.



HBG1

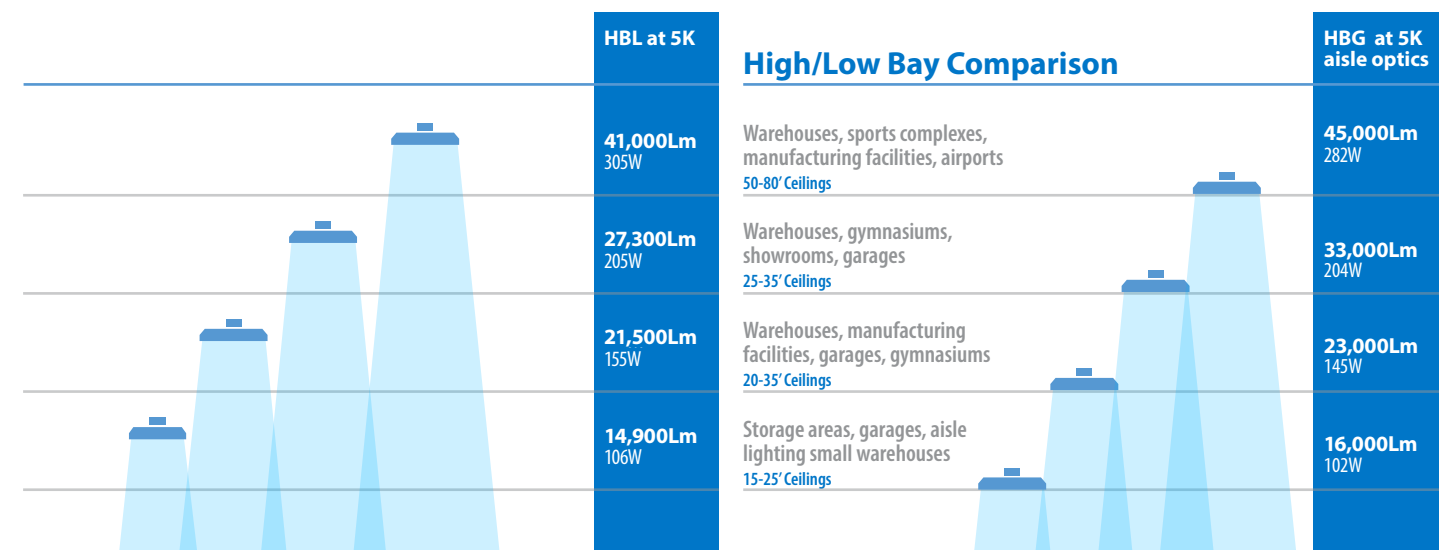
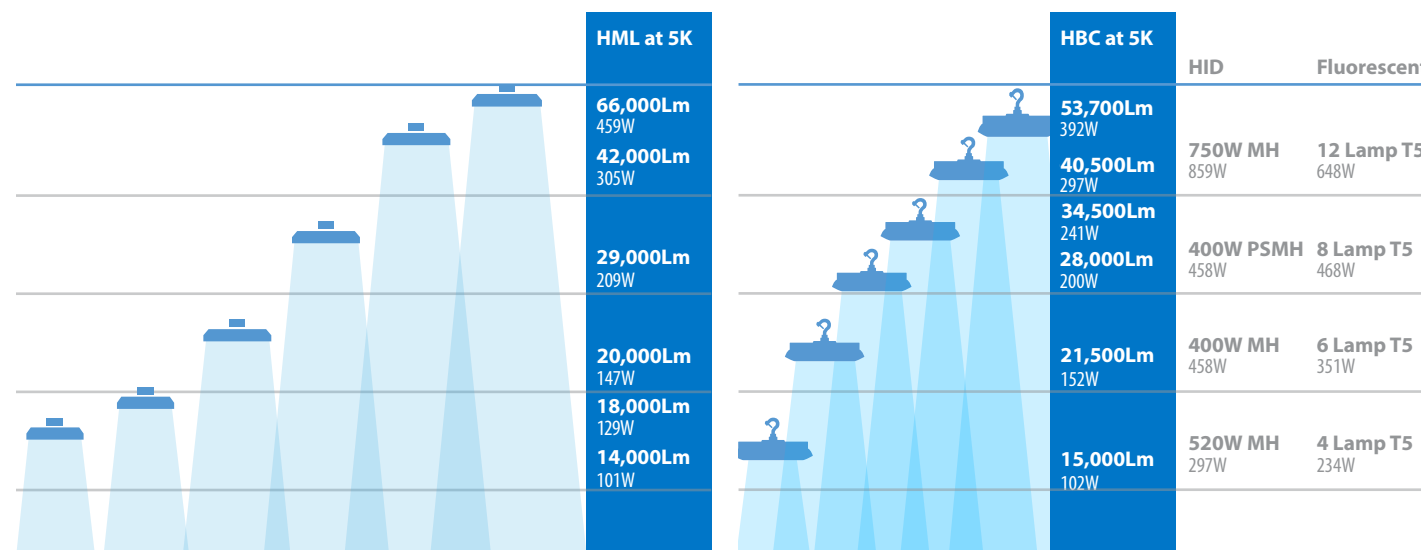
The HBG provides spec grade optimization paired with maximum efficiency. An excellent choice for new construction installations. Utilize the aisle optic in racking areas for optimal performance in warehouses. Its precision-designed optics and variety of distributions and lumen outputs make it easy to fit in any application.



Comparison Chart	Lumens	14,000	18,000	20,000	29,000	42,000	66,000	15,000	21,500	28,000	34,500	40,500	53,700
	Efficiency	141-145 Lm/W						137-149 Lm/W					
	CRI	85+						82+					
	CCT	4000K & 5000K						4000K & 5000K					
	Optics	General, Wide, or Aisle						90° optic					
	Sensor Options	H12VSENSORPIR, H12VSENSORMW						HBC4SENSORPIR, HBC4SENSORMW, & HBC-MWOSR2					
	Ambient Range	-4°F to 131° (-20°C to 55°C)						-40°F to 122°F (-40°C to 50°C)					
	Emergency	HML1EM Series						EMB400					
	NLC	Yes						Yes					
	Ratings												
DLC	5.1 Premium						5.1 Premium						

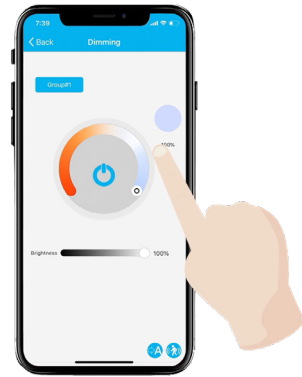
	14,700	21,500	27,300	41,000
Efficiency	133-141 Lm/W			
CRI	80+			
CCT	4000K & 5000K			
Optics	Diffuse			
Sensor Options	H12VSENSORPIR, H12VSENSORMW, HB011-PDX, & MWOS360R2			
Ambient Range	-40°F to 122°F (-40°C to 50°C)			
Emergency	EMB250			
NLC	Yes			
Ratings				
DLC	5.1 Premium			

	16,000	23,000	33,000
Efficiency	154-180 Lm/W		
CRI	70+ or 80+		
CCT	4000K & 5000K		
Optics	Aisle, Diffuse, or No Lens		
Sensor Options	HB011-PDX, MWOS360R2		
Ambient Range	-4°F to 122°F (-20°C to 50°C)		
Emergency	EMB250		
NLC	Yes		
Ratings			
DLC	5.1 Premium		



Lighting Controls

NICOR's Network Lighting Controls (NLC) is a wireless network of components comprised of passive infrared (PIR) motion/daylight sensors, load controllers, power packs, wall controls and system nodes. Each component utilizes Bluetooth Low Energy (BLE) Mesh to remotely control and operate luminaires separately or together as a zone. The NLC system can control up to 100 luminaires per zone across multiple rooms with NICOR's NLC app, available on major app marketplaces.



Three Levels of Lighting Control



Single Luminaire



Room



Building

Emergency Backups

Power failures happen, and you need to be prepared. Our line of emergency drivers provide constant power with a consistent lumen output for 90 minutes. Not sure which driver is right for your project? Reach out to our application engineers to help determine the best solution for your emergency lighting needs.

HML1 Battery Backup

- HML1EM08WRVWH 8W Battery Pack (100W Only)
- HML1EM18WRVWH 18W Battery Pack (100W-150W)
- HML1EM25WRVWH 25W Battery Pack (210W Only)
- HML1EM40WRVWH 40W Battery Pack (300W-450W)



Why NICOR NLC?

Take Control

NICOR's NLC app provides an intuitive, easy-to-use interface to control the full assortment of NLC components. Available on Android and iOS.

System Ready

NICOR's Network Lighting Controls system is designed with simple scaling solutions in mind. All devices are compatible with new and existing framework.

Flexible Solutions

The NLC system features simple scaling solutions to easily add controls to new or existing networks with downward compatible software updates while maintaining seamless, uninterrupted operation.

NICOR NLC Features:

- DLC NLC5 Listed
- Meets or exceeds energy codes for lighting controls
- Flexible grouping/zoning
- Occupancy/vacancy control
- Scheduling
- Daylight responsive control
- Task tuning/high-end trim
- Full dimming
- Energy monitoring
- Networked – Bluetooth Low-Energy Mesh (BLE)
- Building management system integration
- Meets DLC NLC5 Encrypted Security
- Wireless battery wall stations

EMB4002

40W max output on any fixture up to 300W. Easily test your emergency lighting monthly and yearly to meet NFPA 101® without the need of a ladder, using the optional remote control for unbeatable convenience!



Optional remote



EMB250

Outputs 25W (max)



EMB80

Outputs 8.5W (constant)

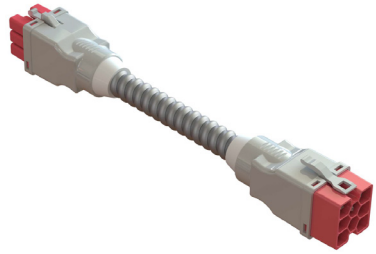


California's Appliance Efficiency Regulations require all state-regulated small battery charger systems meet the energy efficiency requirements of Title 20 and be marked with a "BC" inside a circle. All NICOR battery packs meet these requirements, ensuring the best possible energy efficiency and performance.

Codes, Compliance, & Controls

Modular Power Supply

NICOR's modular power supply system for lighting control and power distribution provide advantages for contractors and facility managers. The flexible system not only reduces installation time but saves time for maintenance and future renovations for any space. The plug-n-play system quickly snaps together and offers a selection of drop boxes, fixture drops, and cables. Contact NICOR today for more information.



Easily Connect

The modular system makes it easy to connect fixtures to one another and to the power supply.



ASHRAE 90.1 and IECC Codes

In the United States, energy codes are typically based on either ASHRAE 90.1 and the Illuminating Engineering Society (IES) or The International Energy Conservation Code (IECC). These are typical minimum requirements for an energy-efficient design of most buildings. Warehouses were added to these requirements in 2015. The goal is reduced energy consumption by 3.5-quadrillion BTU per year and reduced CO2 emissions by 3% by 2030. The code states that at least 50% of all fixtures must be automatically shut off when unoccupied.

What's Required?

ASHRAE/IES 90.1 2016 requires that warehouse storage lighting be automatically reduced when not in use. Specifically, lighting power must be reduced by at least 50% within 20 minutes of vacancy. IECC 2018 requires that occupancy sensors be used throughout warehouses to conserve energy in open areas and aisles. If the warehouse has windowed areas or skylights, the controls must also include daylighting requirements.

NSF Splash Zone

NSF Zone 2, or Splash Zone rating evaluates lighting for areas where direct contact with food products during normal operations would not be expected. However, equipment in this area may be situated in such a way that during processing or cleaning (or both), liquids may splash, spill or otherwise soil the surfaces of the fixture. Areas include wet or damp process areas, high-pressure purging and/or decontamination used in the process, and areas using hose washdown.

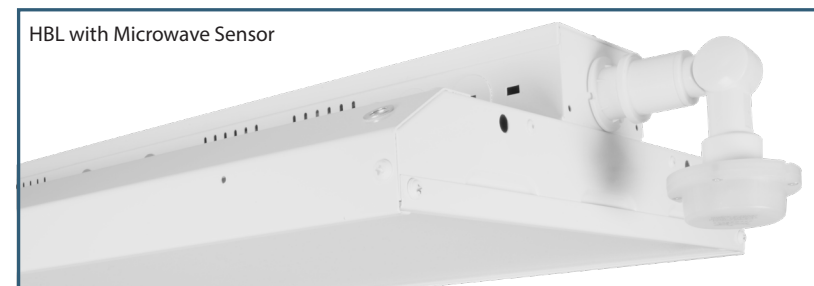
TITLE 24

NICOR luminaires meet Title 24, California's non-residential lighting control requirements when used with additional controls. The controls include occupancy sensing, daylighting, luminaire dimming, and lighting power density.

The Solution

Optimized to meet energy codes for occupancy sensing and daylight harvesting, NICOR has several sensor controls to meet your needs and save energy.

The NICOR passive infrared dimming sensor is easy to set with a remote control for your convenience.



HBL with Microwave Sensor

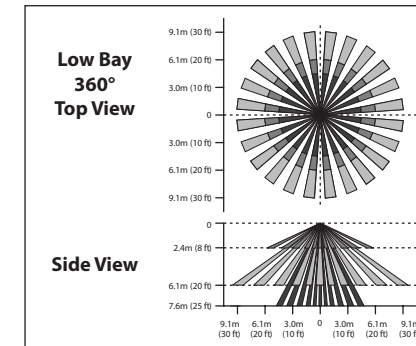
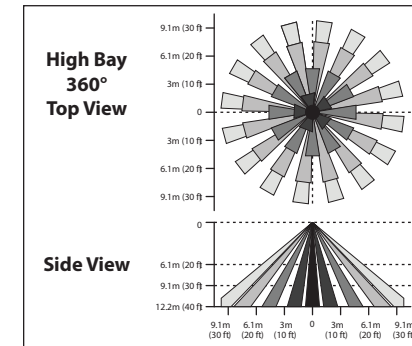
Wireless Options

NICOR's Bluetooth Low Energy (BLE) wireless node is available on a variety of luminaires. The technology provides a mesh network where the intelligence of NICOR network lighting controls (NLC) is replicated in each node. From small to large networks, this option is controlled by a simple app. Contact factory for further information and check compatibility with your desired fixture.

Microwave Motion Sensor

See the individual spec sheet for further information.

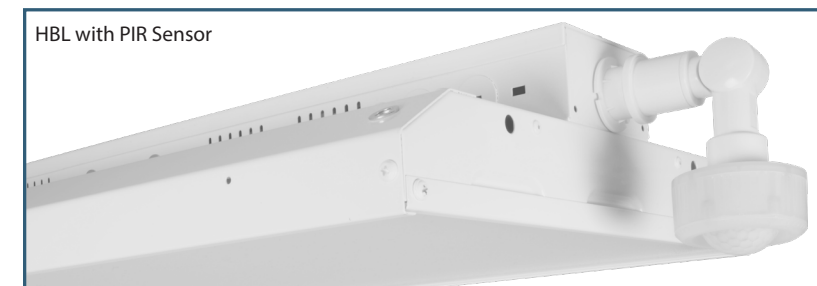
- Field installed 12VDC sensor
- Microwave motion detector with built-in daylight sensor
- Remote control programmable
- Highly configurable:
 - Detection area
 - Hold time
 - Dimming level
 - Standby period
 - Standby dimming
 - Daylight harvesting threshold
- Max mounting height: 50ft (15m)



Passive Infrared (PIR) Motion Sensor

See the individual spec sheet for further information.

- Field installed 12VDC sensor
- Microwave motion detector with built-in daylight sensor
- Remote control programmable
- Highly configurable:
 - Detection area
 - Hold time
 - Dimming level
 - Standby period
 - Standby dimming
 - Daylight harvesting threshold
- Max mounting height: 40ft (12m)



HBL with PIR Sensor



Sensors can be used with an IMS system to increase energy savings and efficiency.

Take Control of Your Lighting with NICOR's All-In-One System.

NICOR's IMS Lighting Control System introduces simplicity in installation with an easy-to-use UI (User Interface) that anyone can use. The DALI-enabled system provides control on all levels from individual fixture control to multi-site empowerment with our Master Control Unit, or MCU. Developed with energy management in mind, this system is perfect for industrial facilities, data centers, and large commercial buildings. With millions of square feet being installed, you can breathe easy knowing the NICOR IMS is a tried and tested solution for your lighting needs.

- IMS/MCU networking capability
- Full IMS networking structure
- Low voltage IMS enabled luminaires
- Interactive floor plans
- Automated Demand Response (ADR) capable
- Remote access controllability
- Energy consumption and usage
- Fixture health reporting

Helpful Hints

- A high bay luminaire is typically mounted at 20' or higher and low bay is 20' or lower.
- Most warehouse layouts average about 35 footcandles at the work plane level.
- Arrange your layout to overlap the end of an aisle to avoid shadows.
- Most new construction buildings have 25'-40' ceilings.
- Recommended reflectance levels are 80/50/20.
- When warehouses include racking system, it is best to specify the HML or HBG high bay with the aisle optics option for these applications.



Warehouse Footcandle Minimums

Task	Horizontal Target (E_h)	Vertical Target (E_v)	Uniformity Target
Loading	10-20	3-6	3:1
Picking/Classifying	10-20	5-10	3:1
Receiving/Staging	30-60	10-20	2:1
Packing/Labeling	30-60	15-30	3:1
Inactive Storage	5-10	2-4	5:1
Inspection	100-200	100-200	3:1
Active Storage (large labels/items)	10-20	5-10	5:1
Active Storage (small labels/items)	30-60	15-30	3:1

Above are the lighting recommendations from the Illuminating Engineering Society. These are minimum levels for each type of task completed in manufacturing facilities. Good lighting is more important than ever.

The effects of great lighting increase workplace productivity

Eye strain, headaches, reduced productivity, and poor concentration are effects of poor lighting conditions, which can decrease productivity. Additionally, the proper color temperature and CRI can increase productivity. An increase as little as 1% in productivity beats any kind of energy savings from antiquated lighting.



Improve Productivity



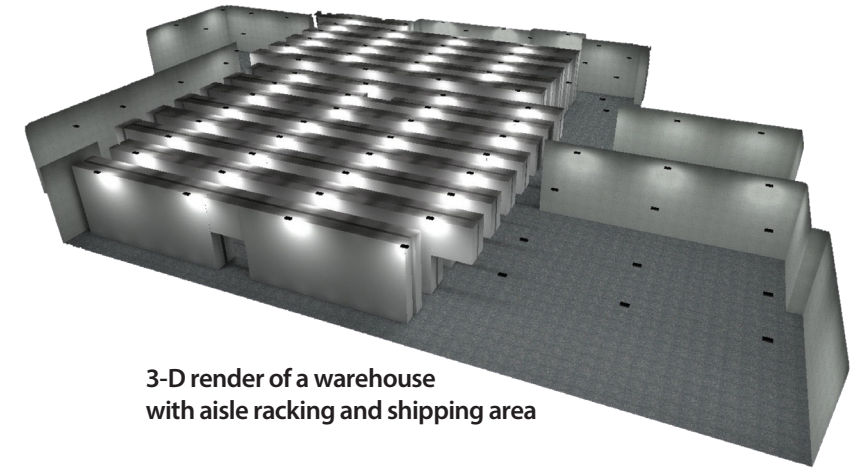
Complex Floor Plan?

If your project involves a complex floor plan or requires a more detailed layout analysis, our team of application engineers can create a detailed 3-D model of your space.

The Making of a Layout

Our application engineers will help you satisfy your customer's requirements; from specific footcandle levels to working space requirements and more. Your customized report provides an in-depth look at how NICOR's lighting solutions are the perfect fit for any project.

- Exporting RCP as CAD files for 3-D modeling
- Revealing hard-to-detect effects of lighting
- Showing uniformity ratios & illuminance levels in specific areas
- Turnaround in 1-2 days



3-D render of a warehouse with aisle racking and shipping area

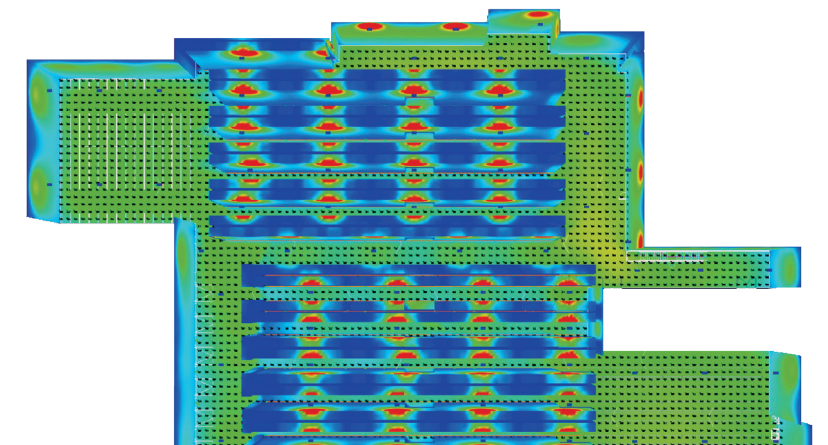


Email or Call Today

layouts@nicorlighting.com
505-343-5390

Simple Layout?

Visit our website:
<https://nicorlighting.com/lighting-layouts/>



Heat Map



Warehouse Locations

Albuquerque, NM
Buford, GA
Detroit, MI
Roseville, CA

T 800.821.6283

F 800.892.8393

www.nicorlighting.com

2200 Midtown Pl. NE
Albuquerque, NM 87107 USA



LIT-Warehouse-10PK
20231122

© 2023 NICOR® • ALL RIGHTS RESERVED

NICOR®