

<b>Project</b>	<b>Comments</b>
<b>Catalog #</b>	<b>Prepared By</b>
<b>Type</b>	<b>Date</b>



## DESCRIPTION

- Suitable for new construction in residential and commercial applications.
- IC rated. Suitable for direct contact with insulation.
- Use one 13W double twin tube, G24Q-1 (not included).

## HOUSING

- Washington State Energy Code approved to meet restricted airflow requirements.
- Airtight housing limits the exchange of air between ceiling plenum and heated/cooled areas.
- Ballast includes integral thermal protector guards against improper lamp installation and misuse of insulation materials.
- 120-277V Universal input electronic ballast.
- 6 1/4" height allows use in 2" x 6" joist construction.

## PLASTER FRAME

- Housing is secured to plaster frame with screws and can be removed for access to junction box.
- Housing adjusts from 1/2" to 1 1/2" to accommodate ceiling thickness.

## JUNCTION BOX

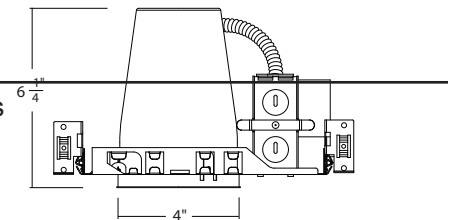
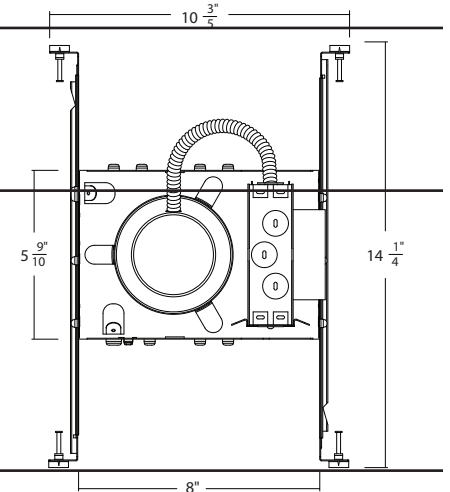
- Listed for through branch circuit wiring and includes several 3/4" knockouts. Four pry-outs with integral strain relief simplify Romex installation.
- Supplied with three IDEAL® push-in wire connectors.

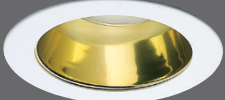
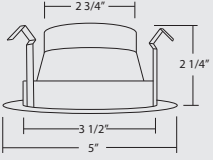
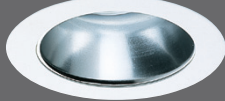
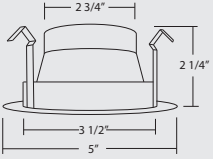

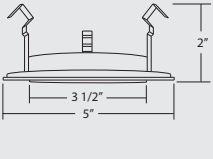

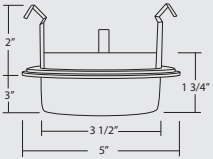
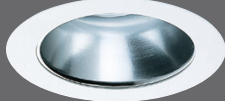
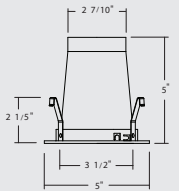

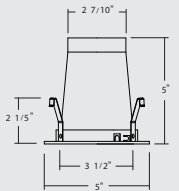
## HANGER BARS

- Heavy-gauge NICOR captive hanger bars provide greater stability, allowing housing to be positioned at any point within a 24" joist span, then locked in place with set screws. Unique hanger bar lip design helps align can to joist. Four double-headed captive nails provide for ease of installation.
- Bars can be repositioned 90° on plaster frame without tools.
- Bars fit onto T-bar spine for quick alignment and can be permanently secured.
- Score lines allow bars to be shortened without tools to accommodate a 12" joist span.

## LISTINGS

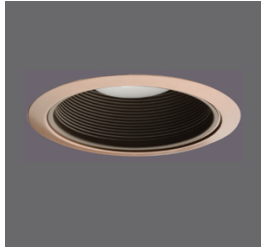
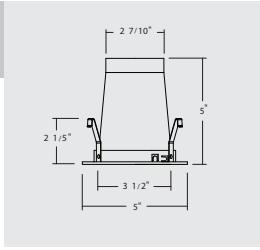
- UL damp location
- UL feed-through
- CUL



	<b>Order No</b>	<b>Description</b>	<b>Maximum Lamp Rating</b>	
	19503 19503WHZ-ABZ	<b>Specular Cone</b> Gold (shown) Wheat Haze (Aged Bronze Ring)	1x13W   G24Q-1 OD: 5"	
	<b>Order No</b>	<b>Description</b>	<b>Maximum Lamp Rating</b>	
	19504	<b>Specular Cone</b> Clear	1x13W   G24Q-1 OD: 5"	
	<b>Order No</b>	<b>Description</b>	<b>Maximum Lamp Rating</b>	
	19509BK	<b>Albalite Shower</b> Black	1x13W   G24Q-1 OD: 5"	
	19509BZ	Bronze	GE F13BX/835/A/ECO is recommended	
	19509CL	Clear		
	19509OB	Oil-Rubbed Bronze	Wet Location Rated	
	19509WH	White		
	<b>Order No</b>	<b>Description</b>	<b>Maximum Lamp Rating</b>	
	19510CL	<b>Drop Opal Shower</b> Clear	1x13W   G24Q-1 OD: 5"	
	19510GD	Gold (shown)	Wet Location Rated	
	19510WH	White		
	<b>Order No</b>	<b>Description</b>	<b>Maximum Lamp Rating</b>	
	19552CL	<b>Specular Cone</b> Clear	1x26W   G24Q-3 OD: 4"	
	19552MT	Matte		
	<b>Order No</b>	<b>Description</b>	<b>Maximum Lamp Rating</b>	
	19555CL	<b>Albalite Shower</b> Clear	1x26W   G24Q-3 OD: 4"	
	19555MT	Matte		



Order No	Description	Maximum Lamp Rating
19550BK	<b>Baffle</b> Black	1x26W   G24Q-3 OD: 4"
19550NK	Brushed Nickel	
19550OB	Oil-Rubbed Bronze	
19550WH	White (shown)	



Order No	Description	Maximum Lamp Rating
19550BKCL	<b>Baffle</b> Black Baffle/Clear	1x26W   G24Q-3 OD: 4"
19550NKCL	Brushed Nickel Baffle/ Clear	
19550OBCL	Oil-Rubbed Bronze Baffle/Clear (shown)	
19550WHCL	White Baffle/Clear	

