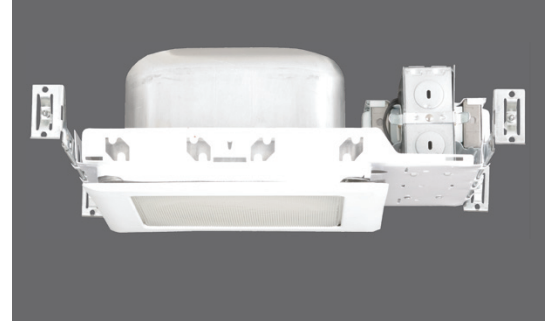


Project *Comments*

Catalog # *Prepared By*

Type *Date*



DESCRIPTION

- Suitable for new construction in residential and commercial applications.
- NON-IC. Insulation must be kept a minimum of 3" from housing.
- Uses two 13W lamps, GX23-2 (not included).

HOUSING

- Aluminum construction provides greater heat dissipation.
- Integral thermal protector guards against improper lamp use and misuse of insulation materials.
- Adjustable socket bracket assures proper and consistent lamp positioning.
- 6 1/2" height allows use in 2" x 8" joist construction.
- 120V Magnetic ballast.

Plaster Frame

- Housing is secured to plaster frame with screws and can be removed for access to junction box.
- Housing adjusts from 1/2" to 1 1/2" to accommodate ceiling thickness.

JUNCTION BOX

- Listed for through branch circuit wiring and includes several 3/4" knockouts. Four pry-outs with integral strain relief simplify Romex installation.
- Supplied with three IDEAL® push-in wire connectors.

HANGER BARS

- Heavy-gauge NICOR captive hanger bars provide greater stability, allowing housing to be positioned at any point within a 24" joist span, then locked in place with set screws. Unique hanger bar lip design helps align can to joist. Four double-headed captive nails provide for ease of installation.
- Bars can be repositioned 90° on plaster frame without tools.
- Bars fit onto T-bar spine for quick alignment and can be permanently secured.
- Score lines allow bars to be shortened without tools to accommodate a 12" joist span.

LISTINGS

- UL damp location
- UL feed-through
- CUL

