

Multi-Tap/Switch Tap

NICOR Modular Wiring System

Project _____

Catalog _____

Type _____

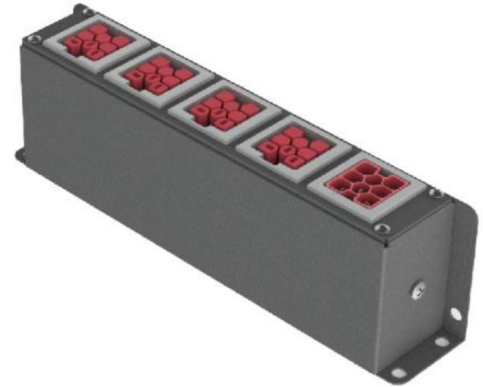
Date _____

Product Description

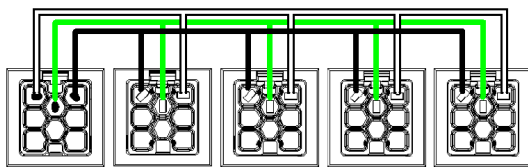
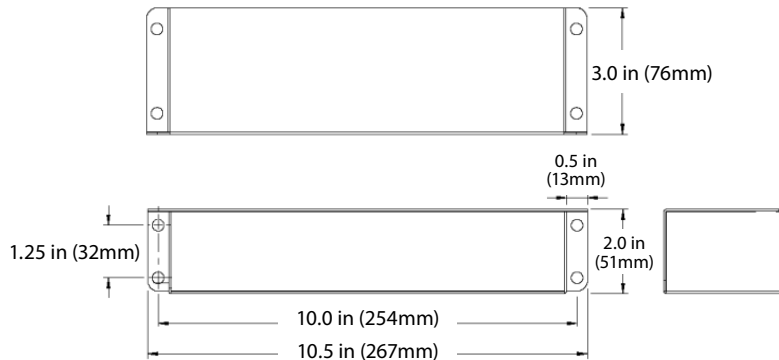
Provides quick, simple, safe, cost-effective power or switch tap solution. Pre-wired assembly expands single input in to multiple outputs or switched and non-switched outputs.

Features & Benefits

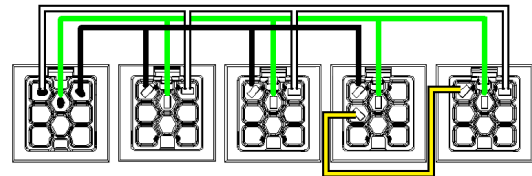
- NICOR Modular Wiring components are UL Listed to be in compliance with UL 183 – Manufactured Wiring Systems (QQVX) and CSA Certified to be in compliance with CSA 22.2 No. 203-1 - Manufactured Wiring Systems.
- Robust terminal design exceeds 470Amp for 4 seconds.
- Connectors are integrally moulded (fully encapsulated) utilizing high impact Halogen-free, Eco-Friendly, Low Smoke, UL94-V0 rated, Oxygen Index – 33%, RoHS-compliant polymers for superior strength, reliability and safety.
- Dielectric Withstand 3000Vac.
- Mating connectors are self-latching and shrouded for added protection.
- Uniquely-keyed and colour-coded to clearly indicate ratings and provide safe, simple, error-free connectivity. Only connectors having identical colours can plug together properly.
- Approved “Ballast Disconnect Means” per NEC 410.73(g) and CEC Part 1 30-308(4).
- Suitable for use in environmental air handling spaces (plenums) per NEC 300-22(c) and CEC Part 1 12-010(3)
- Acceptable for interrupting current (make or break) under full load.
- Mounting bracket for versatile installation.
- Compact size.



Product Dimensions



Multi Tap
1 In, 4 Out (347/600V Shown)



Switch Tap
1 In, 2 Out, Switch, 1 Switched Out (347/600V Shown)

Ordering Information

Example: NM221110MXXYYZZG

Series	System	Application ¹	Enclosure Dimensions ²	Color
NM	22 (125/250V 20A)	1110M (3W; L,N,G)	XXYYZZ (Inches)	G (Gray)
	42 (277/480V 20A)	1011M (3W; 1P Switch)		K (Black)
	62 (347/600V 20A)	1111M (4W; Switch w/Neutral)		N (Brown)
	2D (125/250V 20A + Control)	1112M (5W; 1 Circuit + Control (L,N,G,2C))		T (Tan)
	4D (277/480V 20A + Control)			W (White)
	6D (347/600V 20A + Control)			

1) Consult Configuration Matrix
2) XX = Length in Inches, YY = Width in Inches, ZZ = Height in Inches
Specifications and dimensions subject to change without notice.

