

Phase Tap

NICOR Modular Wiring System

Project _____

Catalog _____

Type _____

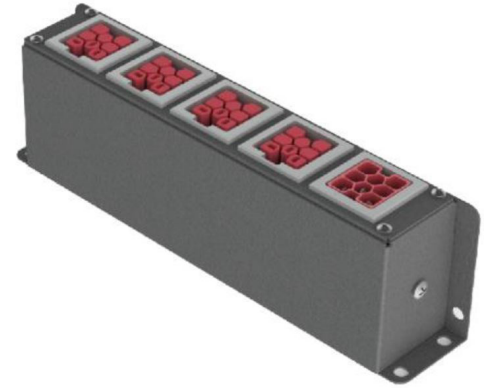
Date _____

Product Description

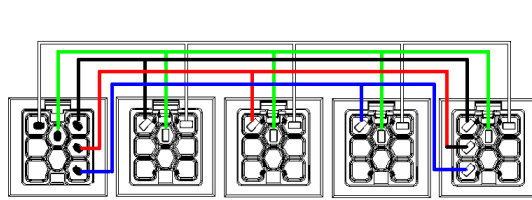
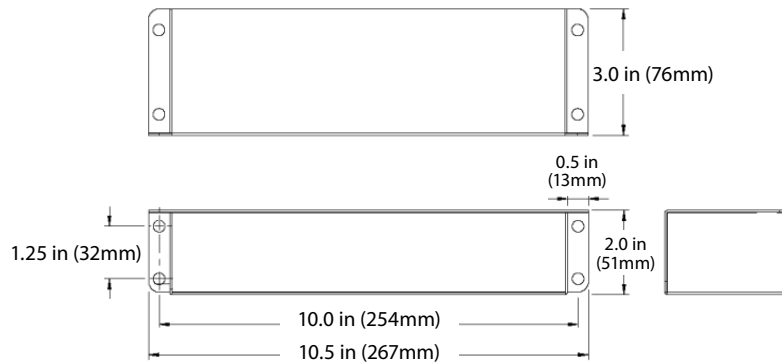
Provides quick, simple, safe, cost-effective phase selection solution. Pre-wired assembly splits a 3 phase input into single phase outputs.

Features & Benefits

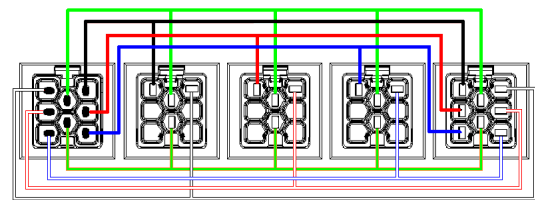
- NICOR Modular Wiring components are UL Listed to be in compliance with UL 183 – Manufactured Wiring Systems (QQVX) and CSA Certified to be in compliance with CSA 22.2 No. 203-1 - Manufactured Wiring Systems.
- Robust terminal design exceeds 470Amp for 4 seconds.
- Connectors are integrally moulded (fully encapsulated) utilizing high impact Halogen-free, Eco-Friendly, Low Smoke, UL94-V0 rated, Oxygen Index – 33%, RoHS-compliant polymers for superior strength, reliability and safety.
- Dielectric Withstand 3000Vac.
- Mating connectors are self-latching and shrouded for added protection.
- Uniquely-keyed and colour-coded to clearly indicate ratings and provide safe, simple, error-free connectivity. Only connectors having identical colours can plug together properly.
- Approved “Ballast Disconnect Means” per NEC 410.73(g) and CEC Part 1 30-308(4).
- Suitable for use in environmental air handling spaces (plenums) per NEC 300-22(c) and CEC Part 1 12-010(3)
- Acceptable for interrupting current (make or break) under full load.
- Mounting bracket for versatile installation.
- Compact size.



Product Dimensions



Phase Tap
3L, N, G (347/600V Shown)



Phase Tap
3L, 3N, 2G (347/600V Shown)

Ordering Information

Example: NM223110ZXXYYZZG

| Series | System | Application ¹ | Enclosure Dimensions ² | Color |
|--------|-----------------------------|---------------------------|-----------------------------------|-----------|
| NM | 22 (125/250V 20A) | 3110Z (5W; 3L, N, G) | XXYYZZ (Inches) | G (Gray) |
| | 42 (277/480V 20A) | 2210Z (5W; 2L, 2N, G) | | K (Black) |
| | 62 (347/600V 20A) | 4210Z (7W; 4L, 2N, G) | | N (Brown) |
| | 2D (125/250V 20A + Control) | 3310Z (7W; 3L, 3N, G) | | T (Tan) |
| | 4D (277/480V 20A + Control) | 2212Z (7W; 2L, 2N, G, 2C) | | W (White) |
| | 6D (347/600V 20A + Control) | 3320Z (8W; 3L, 3N, 2G) | | |

1) Consult Configuration Matrix.
2) XX = Length in Inches, YY = Width in Inches, ZZ = Height in Inches.
Specifications and dimensions subject to change without notice.

