

# Plug

## NICOR Modular Wiring System

Project \_\_\_\_\_

Catalog \_\_\_\_\_

Type \_\_\_\_\_

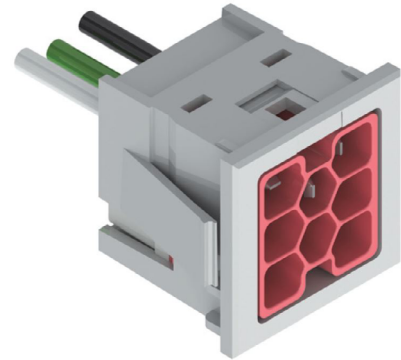
Date \_\_\_\_\_

### Product Description

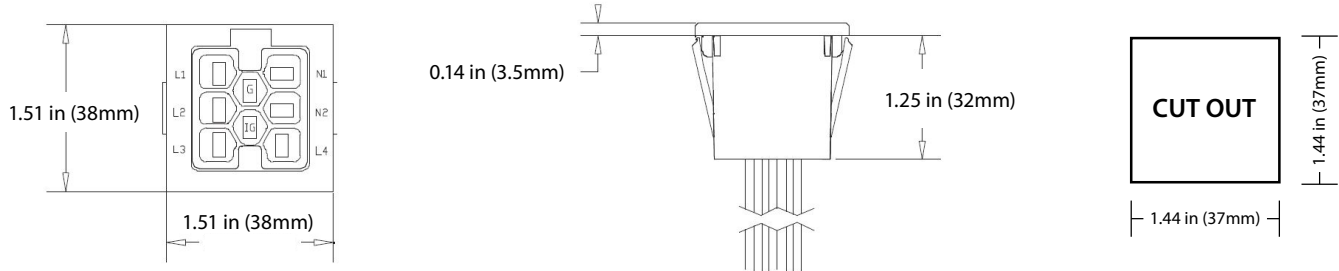
Provides plug-in connection of components within the modular wiring system. Supply end has a male connector. Load end has a female connector. Provides safe, simple intuitive interconnection.

### Features & Benefits

- NICOR Modular Wiring Components are UL Listed to be in compliance with UL 183 – Manufactured Wiring Systems (QQVX) and CSA Certified to be in compliance with CSA 22.2 No. 203-1 - Manufactured Wiring Systems.
- Robust terminal design exceeds 470Amp for 4 seconds.
- Connectors are integrally moulded (fully encapsulated) utilizing high impact Halogen-free, Eco-Friendly, Low Smoke, UL94-V0 rated, Oxygen Index - 33 %, RoHS-compliant polymers for superior strength, reliability and safety. Dielectric Withstand 3000Vac.
- Mating connectors are self-latching and shrouded for added protection.
- Uniquely-keyed and colour-coded to clearly indicate ratings and provide safe, simple, error-free connectivity. Only connectors having identical colours can plug together properly.
- Approved "Ballast Disconnect Means" per NEC 410.73(g) and CEC Part 1 30-308(4).
- Suitable for use in environmental air handling spaces (plenums) per NEC 300-22(c) and CEC Part 1 12-010(3)
- Acceptable for interrupting current (make or break) under full load.
- Capping of unused connector openings is optional as NICOR Modular Wiring components have been evaluated to prevent inadvertent contact with live parts.



### Product Dimensions



### Ordering Information

Example: NM221110P0150W

Series	System	Application <sup>1</sup>	Tail Length	Wire Gauge	Options
NM	22 (125/250V 20A)	1110P (3W; L, N, G)	015 (6in(15cm))	0 (#10AWG)	W (Wire connector)
	42 (277/480V 20A)	2010P (3W; 2L, G)	020 (8in(20cm))	2 (#12AWG)	blank (none)
	62 (347/600V 20A)	2110P (4W; 2L, N, G)	025 (10in(25cm))		
	2D (125/250V 20A + Control)	1120P (4W; L, N, G, IG)	030 (12in(30cm))		
	4D (277/480V 20A + Control)	2210P (5W; 2L, 2N, G)	046 (18in(46cm))		
	6D (347/600V 20A + Control)	3110P (5W; 3L, N, G)			
		3120P (6W; 3L, N, G, IG)			
		2220P (6W; 2L, 2N, G, IG)			
		3310P (7W; 3L, 3N, G)			
		4210P (7W; 4L, 2N, G)			
		3320P (8W; 3L, 3N, G)			
		4220P (8W; 4L, 2N, G, IG)			
		1011P (3W; 1P Switch)			
		1111P (4W; Switch w/ Neutral)			
		1112P (5W; 3, 4-Way Switch w/ Neutral)			
		1112P (5W; 1 Circuit + Control; L, N, G, 2C)			
	3112P (7W; 3 Circuit + Control; 3L, N, G, 2C)				

<sup>1</sup>) Consult Configuration Matrix  
Specifications and dimensions subject to change without notice.

