

# DATA CENTER SOLUTIONS

**NICOR**<sup>®</sup>



# LIGHTING THE FUTURE OF DATA CENTERS



At NICOR, a leading LED lighting fixture and controls manufacturer, reliability is not just a promise; it is the foundation of everything we build. Our data center lighting solutions are designed for exceptional performance, providing durable and energy-efficient options that meet the demanding needs of critical infrastructure. We offer customizable products tailored for a wide range of applications.



NICOR provides the flexibility to customize lighting systems for any environment. Whether you are outfitting a new facility or expanding an existing one, our solutions adapt to your goals.



Committed to offering sustainable solutions, NICOR continually innovates to minimize environmental impact while maintaining the quality and dependability for which our brand is known.



# TABLE OF CONTENTS

Table of Contents	1
NICOR for Data Centers	2
Sustainability	4
Visual Application Map	6
Product Catalog	8
Data Hall Linear Lighting	9
Data Wraparounds	10
Data Hall Harsh Environment Vaportites	10
4", 6" & 8" LED Downlights	10
Office and Data Troffers	11
Low- and High-Bays	11
Emergency Lighting	12
Outdoor Wall Pack	13
Outdoor Area Lights	14
LED Flood Lights	15
Ceiling Mount Canopies	15
Poles	16
Utility	17
IMS	18
Emergency Inverters	20

# NICOR FOR DATA CENTERS

## WORKFLOW CYCLE



NICOR QUOTE  
REQUEST



PROJECT  
MANAGEMENT



DESIGN STAGE



MATERIALS AND  
HANDLING



MANUFACTURING  
TECHNOLOGY



DISTRIBUTION  
AND INVENTORY



SHIPPING AND  
DELIVERY



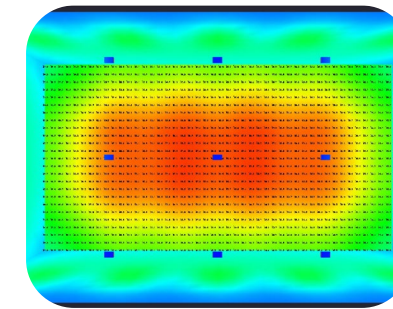
APPLICATION  
SUPPORT

## CORE COMPETENCIES AND RESOURCES



PROJECT MANAGEMENT

Experienced National  
Accounts Management Team



DESIGN

Advanced Lighting Layout and  
Lighting Controls



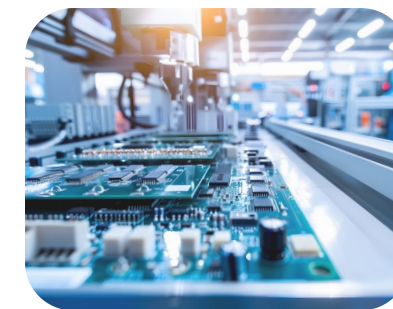
MULTIPLE FACILITIES

150,000 sq ft Distribution  
and Manufacturing Space  
for National Account  
Inventory



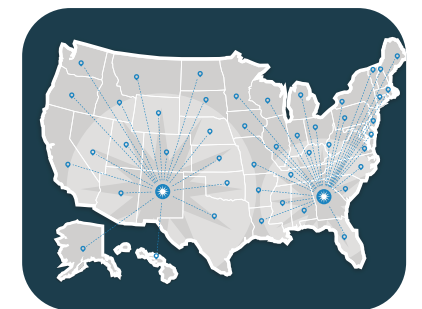
MATERIAL HANDLING

State-of-the-art Equipment.  
Project Management Staging  
and Shipping Teams



MANUFACTURING  
TECHNOLOGY

Quality fixtures tailored to your  
exact needs



SAME DAY SHIPPING

24-hour Nationwide  
Shipping Guarantee with  
Warehouse Management  
based in New Mexico,  
Georgia & California



# SUSTAINABLE BY DESIGN



## Innovative. Transparent. Responsible.

*We don't just build lighting—we empower better buildings. With verified EPDs, smart energy controls, and a deep commitment to sustainability, NICOR helps you light the way to a brighter, greener future.*

### Environmental Product Declarations (EPDs)

*Proven Transparency. Trusted Data.*

- Third-party verified, product-specific EPDs available for select luminaries
- Aligned with ISO 14025 & EN 15804 standards
- Provide clear data on embodied carbon and environmental impact
- Supporting LEED®, WELL™, and ILFI® certification pathways
- Expanding EPD coverage across our full portfolio

EPD Fixtures: *LSA, LSE, LSQ, & LSC.*

[Find the most updated information in our Sustainability Page!](#)



### Energy Efficiency Improvement

NICOR designs energy-efficient LED fixtures and smart control systems with a focus on performance and environmental responsibility.



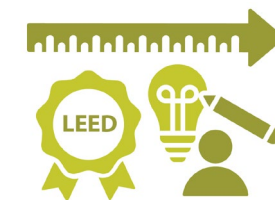
### Waste Emission Reductions

Eco-conscious packaging, responsible sourcing, waste reduction, and renewable energy integration.



### Sustainable Product Lines Expansion

Transparent EPDs, smart energy-efficient designs, and alignment with leading green building standards.



### Feedback & Certification Support

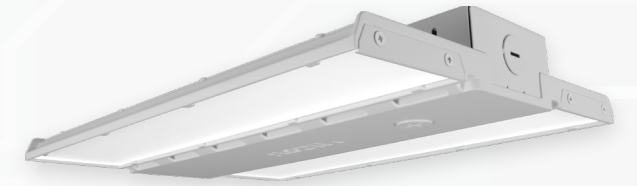
Products meet high-efficiency standards such as:

- DesignLights Consortium (DLC) V5.1
- ENERGY STAR® Downlights V1.0
- California Title 24 (T24)



## NETWORK LIGHTING CONTROLS

These products provide secure networks, energy efficiency, and intuitive control interfaces at different system scales.



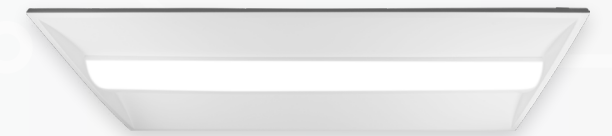
## HIGH BAYS

Designed for different ceiling heights. Efficiently illuminate spaces with even, glare-free LED lights.



## (IMS) ILLUMINATION MANAGEMENT SYSTEM

Developed with energy management in mind, the IMS Lighting Control System is perfect for industrial facilities, data centers, and large commercial buildings.



## TROFFERS

Ceiling recessed fixtures enhance the aesthetic appeal of any space. We offer an extensive range of options to accommodate various environmental requirements.



## EMERGENCY LIGHTS

Designed to operate at low voltage and full brightness. Provide safety during emergency situations such as power outages. We offer a variety of designs that follow life safety codes.



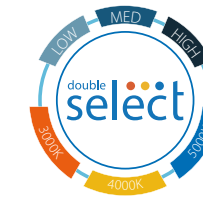
## ARCHITECTURAL LINEARS

This long, narrow LED fixture provides even, efficient and versatile illumination. Sleek and adjustable to different needs, they can be surface-mounted, recessed, or suspended.

# PRODUCT CATALOG

## DATA HALL LINEAR LIGHTING

### LSC Select - LED Linear Strip



Damp-location listed for ceiling, wall horizontal/vertical or continuous row/daisy chaining

Available in 2', 4' and 8' lengths delivers 2,000 up to 11,000 lumens

Switchable Color Temperature and Adjustable Lumen Package is standard for this product line



### LSA Architectural Linear Direct/Indirect Linear



35K

40K

50K



Architectural LED Direct/Indirect Linear 90% down, 10% up distribution

Rugged die cast fixture construction rated for 0 - 50°C damp location environments

Available in 4', 6' and 8' lengths, delivers 5,300 up to 11,600 lumens

Fixture accommodates multiple mounting options such as strut, pendant, aircraft cable and continuous row

### LSE Architectural Linear Direct/Indirect Linear



35K

40K

50K



Edge lit architectural design reduces fixture glare

Direct / Indirect optics design options: (100% down), (80% up/20% down), (50% up/ 50% down), (20% up/ 80% down)

Fixture accommodates multiple mounting options such as strut, pendant, aircraft cable and continuous row

Available in 4' and 8' lengths, delivers 4,000 up to 1,000 lumens

Rugged die cast fixture construction rated for 0 - 50°C damp location environments

### LSQ Architectural LED Direct Linear



35K

40K

50K



Architectural LED Rectangular Linear

Rugged die cast fixture construction rated for 0 - 50°C damp location environments

Fixture accommodates multiple mounting options such as strut, pendant, aircraft cable and continuous row

Available in 4' and 8' lengths, delivers 4,000 up to 13,000 lumens

## DATA WRAPAROUNDS

### WPC4 Cost-effective Linear Wrap



Cost Effective Linear LED WRAP rated -20°C to 50°C  
Efficacies up to 139lm/W to maximize energy savings and rebates with controls available  
Provided with 4 wattage selections and 5 CCT selections. Available in 2' and 4' foot models

## DATA HALL HARSH ENVIRONMENT VAPORTITES

### VT4 LED Vaportite



LED Linear Vaportite  
Wet Location, IP66 rated, -40°C to 50°C rated in suspended mounting applications  
Available in 4' length, delivers 5,300 up to 7,900 lumens

## 4", 6" & 8" LED DOWNLIGHTS

### CDG Modular LED Downlight



4" and 6" sizes deliver from 1,100 to 3,200 lumens  
Comes Standard with three selectable wattages and 5 CCT settings  
Adjustable Medium and Narrow optic packages allow selectable beam patterns from 60° to 22°  
Available with NICOR NLC wireless lighting controls

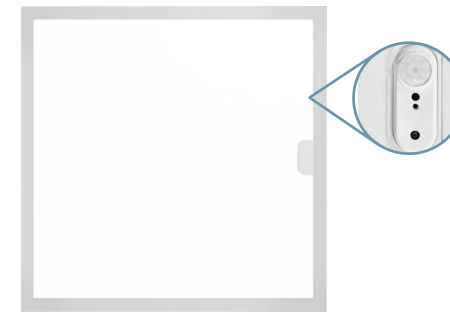
### CLRv3 Commercial LED Recessed Downlight



4" 6" and 8" sizes deliver from 600 to 3,600 lumens  
Frameless fixture design makes installation easy and lowers overall cost  
Selectable wattage (high, medium and low) and CCT (3000, 3500, 4000 and 5000K) are standard features

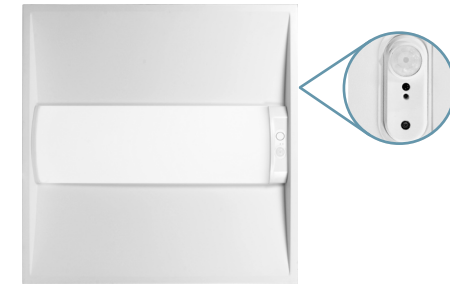
## OFFICE AND DATA TROFFERS

### TGLS4 Sensor-Ready Flat Panel Troffer



High Performance LED Troffer, available in 1' x 4' 2' x 2' and 2' x 4' sizes  
Efficacies up to 156lm/W to maximize energy savings and rebates with controls available  
Fixture design provided with sensor socket receptacle that allows plug-and-play installation of PIR and NICOR NLC sensors  
Selectable wattage (high, medium and low) and CCT (3500, 4000 and 5000K) are standard features

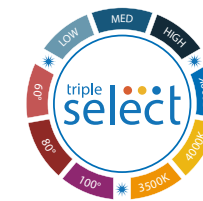
### TAC Sensor-Ready Architectural LED Troffer



High Performance Center Basket LED Troffer, available in 2' x 2' and 2' x 4' sizes  
Efficacies up to 134lm/W to maximize energy savings and rebates with controls available  
Fixture design provided with sensor socket receptacle that allows plug and play installation of PIR and NICOR NLC sensors  
Selectable wattage (high, medium and low) and CCT (3500, 4000 and 5000K) are standard features

## LOW- AND HIGH-BAYS

### HBC6 Selectable LED Low/High Bay



High Performance Circular High Bay available in two selectable wattage sizes  
Triple Select comes standard with 3 selectable wattage ranges, CCT ranges and beam angle options  
150W Select and 240W Select deliver from 13,000 to 35,000 lumens  
All fixtures are sensor-ready to allow easy installation of PIR, MW and NLC Networked Lighting control sensors

### HML4 Triple Select High Bay



High Performance Optic Adjustable High Bay available in three selectable wattage sizes  
Triple Select comes standard with 5 selectable wattage ranges, three CCT ranges, and three selectable beam angles.  
160W Select, 240W Select and 320W Select deliver from 12,000 to 48,000 lumens  
All fixtures are sensor ready to allow easy installation of PIR, MW and NLC Networked Lighting control sensors

## EMERGENCY LIGHTING

### EXL1 Select - LED Emergency Exit Sign



Injection molded EXIT sign with field selectable red or green exit coloring

3 Face Standard: ships with an extra faceplate to quickly convert from single to double faced exit sign depending on the application.

Multi-Volt (120-277V)

AC-Only version is also available per request

### EXL23 LED Edge-Lit Exit Sign



LED Edge Lit Exit Sign

EXIT sign provided with field selectable red or green exit coloring

Field-installable, removable chevron directional indicators (with mounting template) for all configurations

Pivoting EXIT sign panel allows for wall, ceiling, stairwell, or end-mount installation all in one, dependable package

Recessed Mounting Kit available for architectural applications

### ECL1 Select LED Emergency Exit Sign Combo



LED Emergency Exit Sign Combo

Injection molded Combo EXIT/Unit sign with field selectable red or green exit coloring

Provided with universal mounting bracket for simple installation anywhere

This series is available in both a standard and remote-capable options

### EML7 LED High-Output Emergency Light



Two (2) - 3pc LED lamps provide more than 700 Lumens

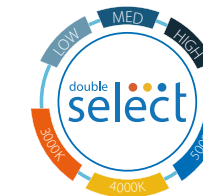
Designed for wall and ceiling-mount

Multi-Volt (120-277V)

6V, 4.5Ah Lead-Acid battery provides 90-minute emergency operation, recharges in 24 hours

## OUTDOOR WALL PACKS

### OSA4 LED Adjustable Sconce



Field selectable power levels: (30/20/12W), (50/40/30W) and (80/70/60W)

Field selectable CCTs (3000/4000/5000K)

Three sizes deliver 1,400 up to 11,000 lumens

Photocell is a standard feature (can be disabled in field)

### OWF4 LED Wall Pack



Full Cut Off LED Wall Pack

One size delivers 5,200 up to 11,000 lumens

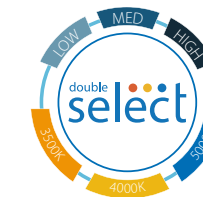
Field selectable Wattage (80W, 60W, 40W)

Field selectable CCTs (3000/4000/5000K)

Photocell is a standard feature (can be disabled in field)

Integral emergency battery pack option available

### OWP2 Architectural Style Full Cut-Off LED Wall Pack



Two sizes deliver 5,400 up to 15,000 lumens

Available with Type II, III and IV optic distributions

Field selectable Wattage (60/48/36) or (100/80/60W)

Field Selectable CCT (3000, 4000 and 5000K)

Photocell is a standard feature (can be disabled in field)

Integral emergency battery pack option available on 60W model



## OUTDOOR AREA LIGHTS

### OAL4 Select



Two sizes deliver 14,000 up to 45,000 lumens  
 Standard field selectable type III, IV and V.  
 Optional field selectable type II, III and IV.  
 Field selectable wattages 150/120/100W and 300/240/200W  
 120-277V and 277-480 Available  
 Field Selectable CCT (3000, 4000 and 5000K)  
 Includes an adjustable, multi-function mounting arm (Universal to work with round pole & square pole) for simpler, quicker installation.  
*Note: Poles quotes available upon request*  
 Optional Microwave motion sensor and twist lock photocell accessories available

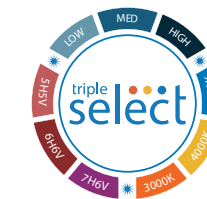
### OAL5 Select



One size delivers 6,700 up to 12,000 lumens  
 Field selectable wattages (80W, 60W, 50W)  
 120-277V and 277-480V Available  
 Field Selectable CCT (3000, 4000 and 5000K)  
 Available with Type II, III, IV and V optic distributions  
 Includes an adjustable, multi-function mounting arm (pole + slipfitter) for simpler, quicker installation  
*Note: Poles quotes available upon request*  
 Optional Microwave motion sensor and twist lock photocell accessories available

## LED FLOOD LIGHTS

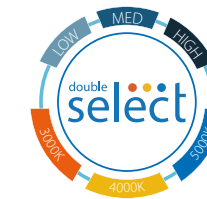
### OFL4 Round-Back LED Flood Light



Five sizes deliver 2,000 up to 48,000 lumens  
 Electronic Beam Angle Select comes standard allowing user to field select 5H5V, 6H6V and 7H6V distributions  
 Field Selectable Wattages of High, Medium and Low  
 Field Selectable CCT (3000, 4000 and 5000K)  
 Knuckle pre-installed on 35W, 60W, and 80W fixtures  
 Slipfitter pre-installed on 150W and 320W fixtures

## CEILING MOUNT CANOPIES

### OUC4 Select



Two sizes deliver 5,500 up to 15,000 lumens  
 Field selectable Wattage (75/60/45) or (120/96/72W)  
 Field Selectable CCT (3000, 4000 and 5000K)  
 Photocell is a standard feature (can be disabled in field)  
 Optional Microwave motion sensor accessories available



## POLES

### OPL Pole for Area Light



<b>Finish</b>	Bronze, White, Black
<b>Material</b>	Steel and Aluminum
<b>Shapes</b>	Square, Round
<b>Sizes</b>	Round: 3", 4", 4.5" Square: 4", 5", 6"
<b>Length</b>	Available in any length needed.
<b>Installation</b>	Anchor Bolt or in-bedded

## UTILITY

### UWL LED Work Light



Available in 100W and 150W  
 360° light pattern and additional down/up light array  
 Available in 5000K  
 Utilizes high performing LEDs with > 80 CRI  
 120-277VAC Input Voltage  
 Hard-wire connections with onboard terminal connector  
 Operating temperature rating of -40°F to 113°F  
 (-40°C to 45°C)

### UDL LED Work Light



Beam angle of 33°  
 Utilizes high performing LEDs with ≥ 70 CRI  
 Operating temperature rating of -13°F to 140°F  
 (-25°C to 60°C)  
 45W System Level Power  
 120VAC Input voltage  
 Die-cast aluminium head and fully adjustable swing arm

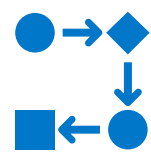


# NICOR<sup>®</sup> IMS

Designed for ease of installation with fast and flexible commissioning

## Take Control of your Facility's Lighting with the Illumination Management System

NICOR's Illumination Management System (IMS) introduces simple installation with an easy-to-use user interface. The Digital Addressable Lighting Interface (DALI) enabled system provides individual fixture control. Developed with energy management in mind, this system is perfect for industrial facilities, data centers, and large commercial buildings.



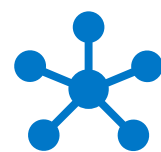
### Fast Commissioning

Streamline commissioning with IMS, reducing setup time from weeks to hours.



### Built-in Interface

No additional apps need to be downloaded. Setup and commission are done using any web browser.



### Flexible Wiring

Fast and easy installation. It includes simple 18/2 wiring and multiple acceptable topologies.



### Full Owner Control

A simple and easy to use interface, allows the owner of the system to make changes without waiting for a technician.



### Daylight Harvesting

Enables fixtures to operate in response to ambient light levels automatically.



### UL924 Listed

IMS Lighting fixtures have emergency lights that stay ON during power outages.



### Time Scheduling

Precise time synchronization reduces energy waste and controls consumption.



### Dynamic Controls

Change what sensors and switches do, depending on the state of the zone that they control.



## EMERGENCY INVERTERS

# Emergency Lighting tailored for Mission-Critical Uptime

At NICOR Lighting, we understand that light isn't just about visibility, it's about **safety, reliability, and peace of mind.**

We offer a robust lineup of **on-line double-conversion Emergency Lighting Inverter Systems** designed for central, high-reliability deployment. All systems are specialized to maintain full-output emergency lighting for at least 90 minutes in alignment with NFPA 101 life safety requirements and NEC installation standards.



### Why These Matter for Data Centers

- **Uninterrupted Emergency Lighting:** Ensures critical egress and operational lighting remain fully powered, even during power disturbances. Compliant with NFPA and NEC codes.
- **Scalable Deployment:** From small backup zones to entire facilities, our line covers the full spectrum of data center sizes and architectures.
- **High Efficiency, Resilient Performance:** Added benefits include boosting energy efficiency, reducing downstream system disruption, advanced features like harmonic filtering and dual input resilience.
- **Facility Flexibility:** Our models provide configurable access (front, top, bottom), optional external maintenance bypass, and support for parallel operations; ideal for minimizing downtime and adapting to tight layouts.
- **Data Center-Focused Design:** These solutions are explicitly recommended for environments like data centers, computer networks, labs, and other high-availability infrastructures.
- **Ease of Monitoring & Maintenance:** Features like LCD displays, sealed battery systems, and centralized configurations simplify ongoing testing, diagnostics, and compliance documentation.



LIT-DATACENTER-BR  
20250918

**NICOR  
Distribution Centers:**

Albuquerque, NM  
Buford, GA  
Roseville, CA

**Contact NICOR Lighting:**

800.821.6283  
[www.nicorlighting.com](http://www.nicorlighting.com)  
2200 Midtown Pl. NE  
Albuquerque, NM 87107 USA

**NICOR<sup>®</sup>**

© 2025 NICOR<sup>®</sup> • ALL RIGHTS RESERVED