

**NICOR<sup>®</sup>** | **LED**

**LED High Bay**  
**HBC-20**



Easy Installation with More Utilization

# HBC-20

## LED High Bay

The HBC-20 LED Low Bay/High Bay is a high-performance fixture perfect for replacing 250W and 400W metal halide luminaires at an affordable price. This high bay fixture supplies an output greater than 130 lumens per watt and excellent color rendering at >80CRI. The forged aluminum heatsink design allows for a lightweight unit. For continued improvements the HBC-20 offers flat optics that are good in low clearance areas. Improved reflector installation with only three keyholes. The driver comes with a 12V output for low voltage sensors and other control systems. With consistent even light distribution this fixture is perfect for environments such as grocery stores, gymnasiums, hangers, industrial, retail, and warehouse spaces.



### Flat Optic Lens

Flat Optic is available in 60° & 90° that is good for low clearance areas

### Driver & LEDs

Providing long-lasting, efficient performance with uniform color and lasting distribution

### Reflectors

With a frosted reflector that reduces glare and makes a 70° beam angle

### Hassle-Free Mounting

Preinstalled hook with locking bolt allows for rapid installation

### Tempered Glass Lens

Fixture comes standard with clear lens and has optional reflectors and optics available



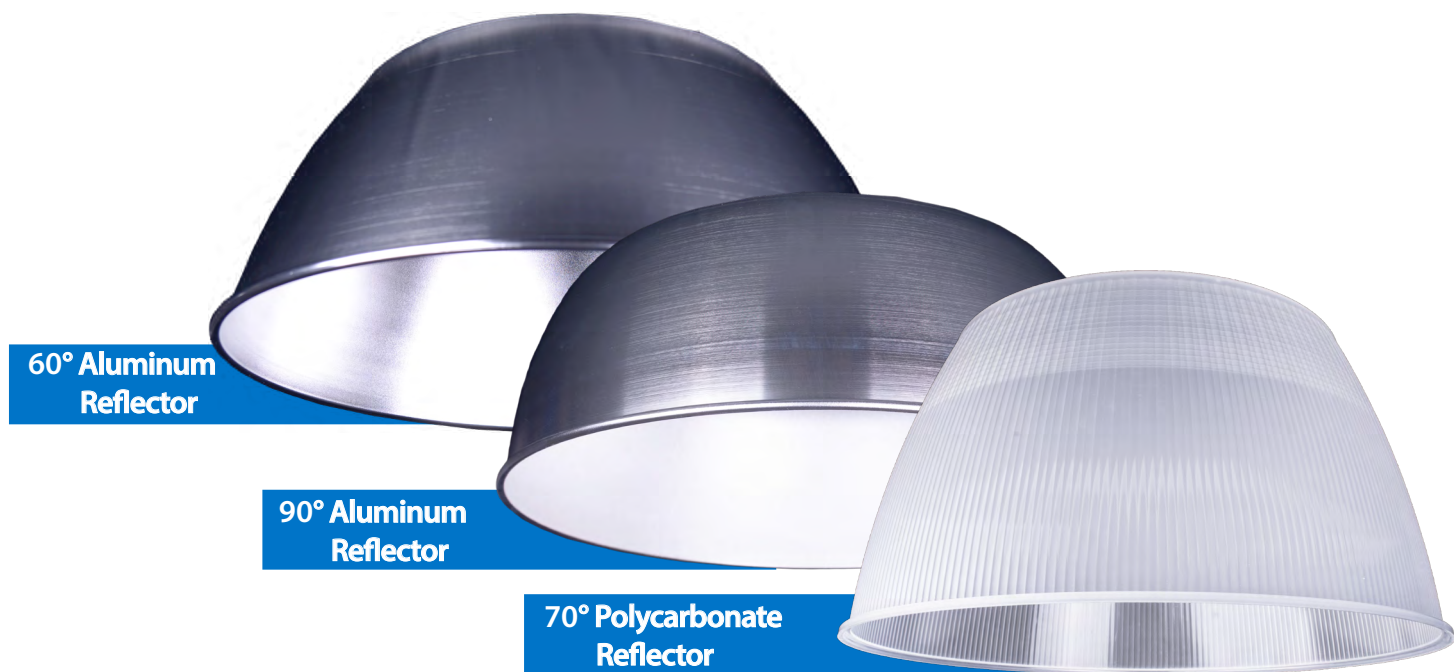
Fixture shown with Polycarbonate Reflector



## Wattage Options



## Reflector Options



# HBC-20

## Ordering Information

### Construction

- Forged aluminum heatsink provides superior cooling while reducing fixture weight
- IP65 fully sealed construction and suitable for wet locations

### Optical System

- High efficiency LEDs with tempered glass protective cover
- 120° No Reflector for overall general illumination
- 70° Polycarbonate Reflector
- 60° & 90° Aluminum Reflector
- 60° & 90° Flat Optic
- Polycarbonate glare shields to minimize glare

### Electrical

- Industrial-grade high efficiency driver
- 120-277VAC Standard
- Utilizes advanced high-powered LED technology with CCT of 4000K and 5000K with >80 CRI
- High power factor: >0.9
- Operating temperature range: -40° to 122°F (-40° to 50°C)
- Dimming: 0-10V standard
- 6ft power cord
- 3ft dimming wire with additional 12V output for low voltage sensors and other control devices

### Finish

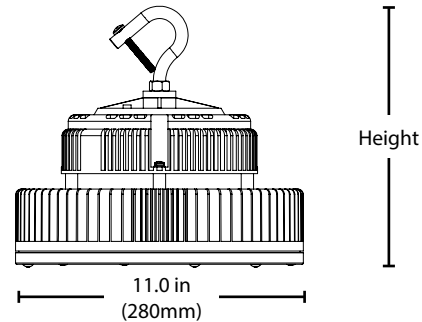
- Black anodized heatsink for optimal heat management

### Mounting and Installation

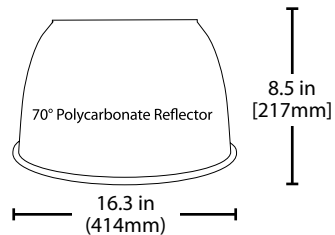
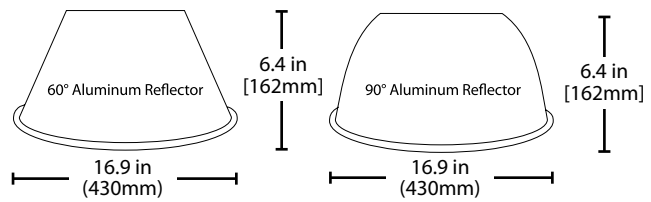
- Preinstalled hook with locking bolt allows for rapid installation
- For installations where power surge may be possible, NICOR recommends installing additional surge protection at the fixture or electrical distribution panel

### Warranty

- 5-year limited system warranty standard
- Warranty does not cover product failure due to an overvoltage event (power surge)
- For installations where power surge may be possible, NICOR recommends installing additional surge protection at the electrical distribution panel



	HBC-20-100W-UNV	HBC-20-150W-UNV	HBC-20-240W-UNV
Width:	11.0 in. (280mm)	11.0 in. (280mm)	11.0 in. (280mm)
Height:	8.3 in. (212mm)	8.3 in. (212mm)	9.5 in. (242mm)



Performance Data			
Model Number	Lumens	Watts	Lumen/Watt
HBC-20-100W-UNV-40K	13925	102.8	135.5
HBC-20-100W-UNV-50K	14131	102.8	137.5
HBC-20-150W-UNV-40K	20399	152.7	133.6
HBC-20-150W-UNV-50K	20696	152.7	135.5
HBC-20-240W-UNV-50K	31913	242.5	131.6



\*Clear Lens Only

## Ordering Information

Example: HBC-20-100W-UNV-50K

Series	Version	Wattage	Voltage	CCT's
HBC	20	100W	UNV (120-277)	40K (4000 K)**
		150W	HV (347-480)*	50K (5000K)
		240W		

Specification and dimensions subject to change without notice

\* Consult factory for availability

\*\* Not available for 240W

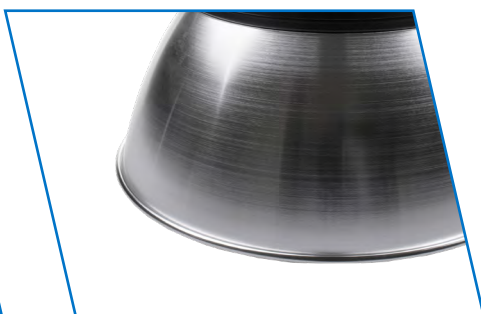


# Accessories



## 60° Aluminum Reflector

60° Aluminum Reflector that is easy to install by the end- user with a three keyhole installation at 60° beam angle



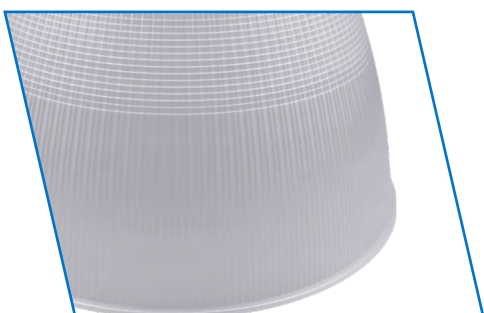
## 90° Aluminum Reflector

90° Aluminum Reflector that is easy to install by the end- user with a three keyhole installation at 90° beam angle



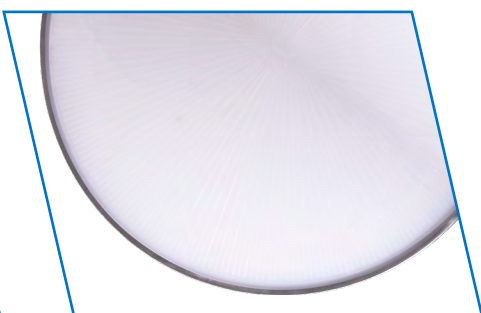
## Glare Shield for Aluminum Reflector

Glare Shield for the Aluminum Reflector to help minimize glare



## 70° Polycarbonate Reflector

70° Polycarbonate Reflector that is easy to install by the end- user with a three keyhole installation at 70° beam angle



## Glare Shield for Polycarbonate Reflector

Glare Shield for Polycarbonate Reflector to help minimize glare



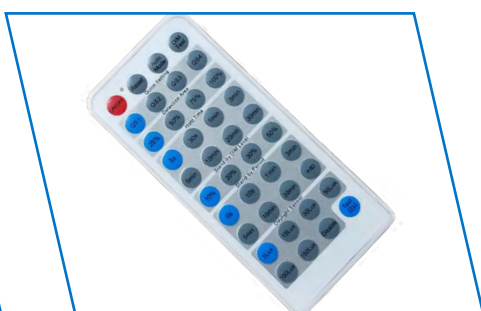
## Flat Optic\*

Flat Optic Lens available in 60° and 90°



## Microwave Motion Sensor (IP65)

Offering stand-by dimming during vacancy at 50, 30, 20 and 10 percent light output, this sensor facilitates greater energy savings. Remote control functionality.



## MWOS-REMOTE

Remote control for Microwave Motion Sensor



## Mounting Bracket\*\*

Mounting Bracket for MWOSR Only for HBC20 heatsink installation

### Optic Accessories

60° Aluminum Reflector	HBC-20-RFL-AL-60
90° Aluminum Reflector	HBC-20-RFL-AL-90
Glare Shield for Aluminum Reflector	HBC-20-GS-AL
70° Polycarbonate Reflector	HBC-20-RFL-PC-70
Glare Shield for Polycarbonate Reflector	HBC-20-GS-PC
60° Flat Optic*	HBC-20-OPTIC-60
90° Flat Optic*	HBC-20-OPTIC-90

### Motion Sensors

Microwave Motion Sensor	HBC-MWOSR
Mounting Bracket for HBC-MWOSR***	HBC-20-MSBRACKET
Remote Control for HBC-MWOSR	MWOS-REMOTE

\*Factory Install Only

\*\* Not required for mounting to reflector

### Plug Accessories

*\*Plug options are field install only*

15 amp 120V Straight Blade Plug	515P
15 amp 120V Twist Lock Plug	L515P
15 amp 250V Twist Lock Plug	L615P
15 amp 277V Twist Lock Plug	L715P
20 amp 277V Twist Lock Plug	L720P
20 amp 347V Twist Lock Plug	L2320P
20 amp 480V Twist Lock Plug	L820P

### Warehouse Locations

Albuquerque, NM

Atlanta, GA

Detroit, MI

Hayward, CA

Indianapolis, IN

Miami, FL

Syracuse, NY

Van Nuys, CA

**T 800.821.6283**

F 800.892.8393

[www.nicorlighting.com](http://www.nicorlighting.com)

2200 Midtown Pl. NE

Albuquerque, NM 87107 USA



LIT-HBC2-10PK

©2017 NICOR® • ALL RIGHTS RESERVED



**NICOR**®