The logo for NICOR, featuring the letters 'NICOR' in a bold, black, sans-serif font. The letter 'O' is replaced by a blue circular icon containing a white eight-pointed starburst or compass rose design. A registered trademark symbol (®) is positioned to the upper right of the 'R'.

NICOR[®]

A large, bold, black sans-serif title 'Office & Warehouse Lighting' is centered across the bottom of the page. The word 'Office' is in white, and 'Warehouse' is in black. The word 'Lighting' is in a smaller, grey font. The background is split: the left side is a yellow-tinted image of a warehouse interior with a complex steel truss ceiling, and the right side is a white-tinted image of a modern office cubicle with desks, chairs, and a spiral staircase in the background.

Office & Warehouse Lighting

Low/High-Bays | Wraparounds | Linear Strips | Vaportites | Troffers

NICOR[®] Warehouse Overview



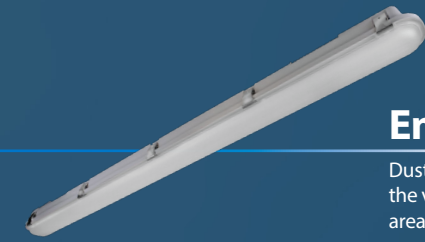
Linear Lighting

For a clean and professional office aesthetic, our various LED Linear Strip Lights provide the perfect lighting solution.



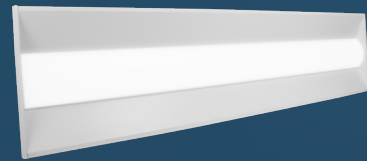
Wrap Lights

Our versatile LED Wraparound lights are easy to surface mount onto both ceilings and walls. These are ideal for warehouses, office spaces, light commercial, & residential applications.



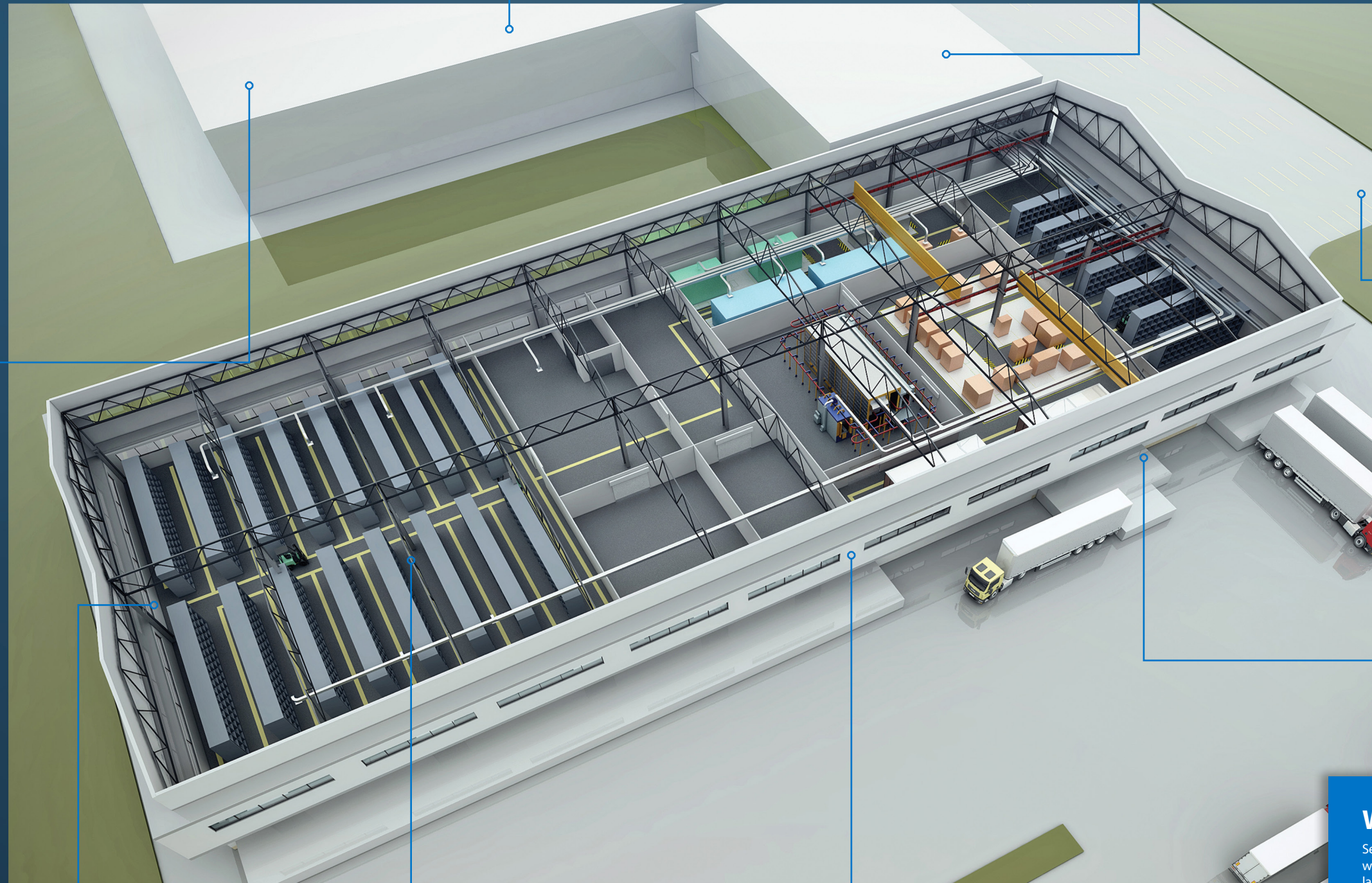
Enclosed Vaportites

Dust, water, and vapor are no match for the vaportites. Light your woodworking area, machine shop, shower room, and more with our vapor tight products.



Troffers

Office lighting is key to productivity. Our troffers provide economical illumination for interior spaces.



Parking

Choose our OAL Area Lighting family of products for parking lots. We also carry a variety of luminaires for covered parking areas.



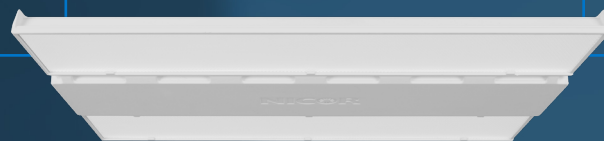
Work Lights

The UWL is a portable, lightweight LED work light designed for construction sites, outdoor projects, and other worksites.



Emergency

Meet egress requirements and provide safety for employees with our wide variety of emergency lighting fixtures.



Low/High-Bays

Low/high-bay fixtures are designed for warehouse environments. Choose between wide optics for open areas, or narrow optics for aisle lighting.

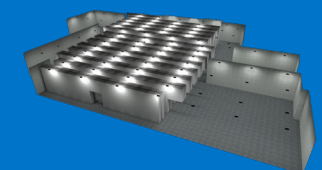


Outdoor Lighting

Illuminate walkways and other outdoor areas while highlighting exterior features with NICOR's wide range of Outdoor Lighting fixtures.

Warehouse Site Lighting

See how NICOR can assist with completing your warehouse layout. From interiors to exteriors and landscape lighting, we'll exceed your standards. To help finalize the best light and quantities for your project, give us a call at 505-343-5390 and we can run a layout to determine the number of lights you need.



For more information see page 55

Warehouse Lighting



Complete Your Project With NICOR

NICOR's wide variety of lighting solutions makes it easy to complete your project from top to bottom. From high-performance industrial high bays to rugged and durable outdoor fixtures, NICOR carries everything you need to outfit your project. When you choose NICOR, you choose a single source to meet all your lighting needs.



HML

HBL

HBN

HBC

Benefits



99% of Orders
Ship within 24 Hours



Let us do the heavy lifting. If your project involves a complex floor plan, NICOR's engineers can create a detailed model of your space.



Nationwide shipping. Our experienced team of engineers and sales representatives deliver the highest level of customer support.

TABLE OF CONTENTS

Low/High-Bays

6	HML1
8	HML2
10	HML3
12	HBC4
14	HBC5
16	HBC6
18	HBL4
20	HBN

Wraps/Linear Strips

26	WPC3
28	LSL1
30	LSL1-NP
32	LSC-Select
34	LSC2-Select

Vaportites

36	VT3-20
38	VT4

Troffers

40	TGLS3
42	TGL4
44	TGL4S
46	TAC2-Select
48	TAC3-Select
50	TARS2

HML1

Cast Aluminum Housing

Allows operation up to 55°C with integrated cooling features

Lens Options

Diffused lens reduces glare. Wide and Aisle options are designed to reduce fixture count.

HML1 LED HIGH-PERFORMANCE HIGH BAY

The patent-pending, ultra-efficient, high-performance HML Series LED high-bay features a compact design (only 10"x14" on lower wattages) with an impressive light output. The DLC 5.1 Premium certified fixture offers a variety of wattage, sensor, and aisle distribution options. Its durable single-piece cast aluminum design is perfect for rugged applications like warehouses, gymnasiums, and other industrial or commercial spaces.

10x14" Footprint

Compact design offers impressive light output with simple, single-person installation.

Integrated Sensor Socket

Optional socket allows use of low-voltage sensors.

Hassle-Free Mounting

Easy mounting with chain and hook or optional surface and pendant mount kits.

Performance Data Standard + Wide

Model #	Lumens	Watts	LPW
HML1100U40A	14200		141
HML1100U50A	14284	101	141
HML1130U40A	18138		141
HML1130U50A	18228	129	141
HML1150U40A	20574		140
HML1150U50A	20675	147	141
HML1210U40A	29258		140
HML1210U50A	29412	209	141
HML1300U40A	42055		137
HML1300U50A	42266	305	138
HML1450U40A	66516		144
HML1450U50A	66850	459	145

Performance Data Aisle

Model #	Lumens	Watts	LPW
HML1150U40C	19134		130
HML1150U50C	19228		131
HML1210U40C	27204		130
HML1210U50C	27338	209	131
HML1300U40C	39251		131
HML1300U50C	39307	305	131
HML1450U40C	61860		134
HML1450U50C	62171	459	135



*DLC Premium available only on 90°x90° distribution (type A)



Applications: Warehouses, gymnasiums, and other industrial or commercial spaces

Photometric Data

100W 5000K

Input Voltage (VAC)	120-277
System Level Power (W)	101
Delivered Lumens (Lm)	14284
System Efficacy (Lm/W)	141
Correlated Color Temp (K)	5000
Color Rendering Index (CRI)	86
Beam Angle (0)	89.1°
Beam Angle (90)	90.6°
Spacing Criteria (0)	1.26
Spacing Criteria (90)	1.26

130W 5000K

Input Voltage (VAC)	120-277
System Level Power (W)	129
Delivered Lumens (Lm)	18228
System Efficacy (Lm/W)	141.3
Correlated Color Temp (K)	5000
Color Rendering Index (CRI)	86
Beam Angle (0)	89°
Beam Angle (90)	90.6°
Spacing Criteria (0)	1.26
Spacing Criteria (90)	1.26

150W 5000K

Input Voltage (VAC)	120-277	277-480
System Level Power (W)	147	147
Delivered Lumens (Lm)	20675	20664
System Efficacy (Lm/W)	140.6	140.6
Correlated Color Temp (K)		5000
Color Rendering Index (CRI)		86
Beam Angle (0)		88.9°
Beam Angle (90)		90.6°
Spacing Criteria (0)		1.26
Spacing Criteria (90)		1.26

210W 5000K

Input Voltage (VAC)	120-277	277-480
System Level Power (W)	209	
Delivered Lumens (Lm)	29412	29396
System Efficacy (Lm/W)	141	141
Correlated Color Temp (K)		5000
Color Rendering Index (CRI)		85
Beam Angle (0)		88.7°
Beam Angle (90)		90.5°
Spacing Criteria (0)		1.28
Spacing Criteria (90)		1.26

300W 5000K

Input Voltage (VAC)	120-277	277-480
System Level Power (W)	305	
Delivered Lumens (Lm)	42266	42243
System Efficacy (Lm/W)	139	139
Correlated Color Temp (K)		5000
Color Rendering Index (CRI)		86
Beam Angle (0)		88.9°
Beam Angle (90)		90.6°
Spacing Criteria (0)		1.28
Spacing Criteria (90)		1.26

450W 5000K

Input Voltage (VAC)	120-277	277-480
System Level Power (W)		459
Delivered Lumens (Lm)	66850	66783
System Efficacy (Lm/W)	145	145
Correlated Color Temp (K)		5000
Color Rendering Index (CRI)		86
Beam Angle (0)		88.9°
Beam Angle (90)		90.6°
Spacing Criteria (0)		1.28
Spacing Criteria (90)		1.26

Ordering Information

Series	Version	Wattage	Input Voltage	CCT	Distribution	Sensor Socket	Emergency	Wiring Options
HML	1	100 (14000 lm)	U (120-277V)	40 (4000K)	A (90°x90°)	Blank (No)	Blank (No)	Blank (No)
		130 (18000 lm)	H (277-480V) ¹	50 (5000K)	B (105°x105°)	S (Socket)	E08 (8W)	C (Cord-3-wire, 6ft) ³
		150 (20000 lm)			C (45°x100°) ²		E18 (18W)	C4 (Cord-4-wire, 6ft) ^{3,4}
		210 (29000 lm)					E25 (25W)	F (Flex Conduit - 6ft)
		300 (42000 lm)					E40 (40W)	
		450 (66000 lm)						

Example: HML1100U40AS

Specifications and dimensions subject to change without notice. 1) HV available on 150W, 210W, 300W, 450W at 5000K only. Consult manufacturer for other models. 2) Aisle distribution is only available for 150W and up. 3) C3 cord is 18/3 wire, 6' long, black. Other lengths available upon request. 4) Flexible metal conduit is 6' long, 18/3 wire configuration. Other lengths available upon request.

*NLC Compatible, see page 24 for details.

Accessories



HML2

Cast Aluminum Housing

Allows operation up to 55°C with integrated cooling features

Lens Options

Diffused lens reduces glare. Wide and Aisle options are designed to reduce fixture count.

HML2 LED HIGH-PERFORMANCE HIGH BAY

NICOR's HML2 Series offers an ultra-efficient, patent-pending, and high-performance LED high-bay. With only a 12.6"x23" footprint its compact design offers an impressive light output with simple, single-person installation. The DLC 5.1 Premium certified fixture offers selectable wattage (320/270/220W), sensor, and aisle distribution options. It's durable single-piece cast aluminum design is perfect for rugged applications like warehouses, gymnasiums, and other industrial or commercial spaces.

12.6x23" Footprint

Compact design offers impressive light output with simple, single-person installation.

Integrated Sensor Socket

Pre-installed 3.5mm sensor socket.

Hassle-Free Mounting

Easy mounting with chain and hook or optional surface and pendant mount kits.

Performance Data			
Model #	Lumens	Watts	LPW
HML2320U40A	31418	221	142.2
	38242	269	
	45350	319	
HML2320S0A	31582	221	142.9
	38441	269	
	45587	319	



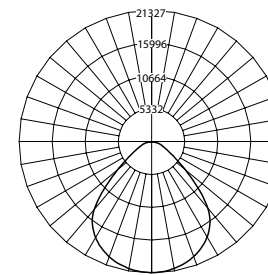
Applications: Warehouses, gymnasiums, and other industrial or commercial spaces



Photometric Data

320W 3500K

Input Voltage (VAC)	120-277
System Level Power (W)	318
Delivered Lumens (Lm)	44304
System Efficacy (Lm/W)	139.3
Correlated Color Temp (K)	3422
Color Rendering Index (CRI)	82
Beam Angle (0)	89.3°
Beam Angle (90)	90.6°
Spacing Criteria (0)	1.26
Spacing Criteria (90)	1.26



Selectable Wattage

Offers selectable power levels: 320W/270W/220W

Ordering Information

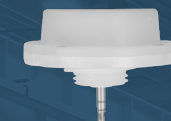
Example: HML2320WSU50A

Series	Version	Wattage	Input Voltage	CCT	Distribution	Sensor Socket	Emergency	Wiring Options
HML	2	320WS (320/270/220W)	U (120-277V)	35 (3500K) ⁴	A (90°x90°)	S (Socket)	Blank (No)	Blank (No)
			H (277-480V)	40 (4000K)	B (105°x105°)	E40 (40W)	C3 (Cord-3-wire, 6ft) ¹	
				50 (5000K)	C (45°x100°) ²		C4 (Cord-4-wire, 6ft) ²	
				57 (5700K) ⁴			F (Flex Conduit - 6ft) ³	

Specifications and dimensions subject to change without notice. 1) C3 Cord is 18/3 wire, 6' long, black. Other lengths available upon request. 2) C4 cord is 18/4 wire, 6' long, black, for use with Emergency enabled fixtures. Other lengths available upon request. 3) Flexible metal conduit is 6' long, 18/3 wire configuration. Other lengths available upon request. 4) 3500K & 5700K CCT available as special order.

*NLC Compatible, see page 24 for details.

Accessories



Microwave Sensor



PIR Sensor



NLC PIR Sensor



Wireguard



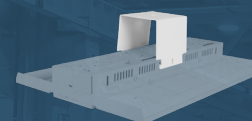
H12V-REMOTE



Aircraft Cable



Pendant Kit



Surface Kit



EM Kit

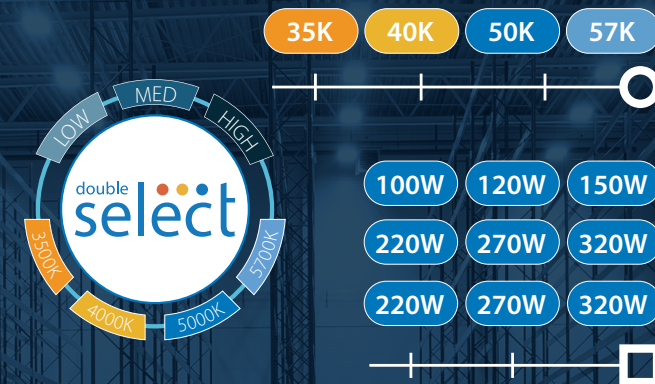
HML3

Cast Aluminum Housing

Allows operation up to 131° F (55°C) with integrated cooling features

Lens Options

Diffused lens reduces glare. Wide and Aisle options are designed to reduce fixture count.



HML3 LED HIGH-PERFORMANCE HIGH BAY

Unveiling improved design aesthetics, the patent-pending HML3 combines unrivaled efficiency and peak performance. Experience brilliance beyond measure as its compact form yields an extraordinary light output. The DLC 5.1 Premium certification attests to its excellence, offering both selectable wattage and color temperature setting (3500/4000/5000K/5700K). Crafted from single piece, robust cast-aluminum, its durability withstands even the harshest conditions, rendering it ideal for warehouses, gymnasiums, and assorted industrial or commercial settings. With an integrated cooling system and a top-mounted wire-way cover for effortless wire access, the HML3 emerges as the embodiment of streamlined functionality. A polyester powder coat finish crowns its aesthetic, culminating in a luminary masterpiece that seamlessly merges innovation and endurance.

Hassle-Free Mounting

Easy mounting with chain and hook or optional surface and pendant mount kits.

Integrated Sensor Socket

Pre-installed 3.5mm sensor socket allows use of low-voltage lighting controls

Performance Data

Standard Distribution - 150W

Model #	CCT	Lumens	Watts	LPW
HML3150SUSAS8	3500	13856	100	139
	4000	14386		144
	5000	14179		142
	5700	13956		140
	3500	16627	120	139
	4000	17263		144
	5000	17015		142
	5700	16747		140
	3500	20784	150	139
	4000	21579		144
	5000	21269		142
	5700	20934		140

Standard Distribution - 320W

Model #	CCT	Lumens	Watts	LPW
HML3320SUSAS8	3500	31145	220	142
	4000	32130		146
	5000	31824		145
	5700	32160		146
	3500	38224	270	142
	4000	39432		146
	5000	39056		145
	5700	39469		146
	3500	45302	315	144
	4000	46734		148
	5000	46289		147
	5700	46778		149
HML3320SHSAS8 (277-480VAC)	3500	31526	220	143
	4000	32462		148
	5000	32040		146
	5700	32255		147
	3500	38691	270	143
	4000	39839		148
	5000	39322		146
	5700	39586		147
	3500	45856	315	146
	4000	47217		150
	5000	46604		148
	5700	46917		149

Standard Distribution - 550W

Model #	CCT	Lumens	Watts	LPW
HML3550SUSAS8	3500	68160	480	142
	4000	70080		146
	5000	69600		145
	5700	70080		146
	3500	73840	520	142
	4000	75920		146
	5000	75400		145
	5700	75920		146
	3500	79200	550	144
	4000	81400		148
	5000	80850		147
	5700	81950		149



*DLC Premium on A Optic only



Applications: Warehouses, gymnasiums, and assorted industrial or commercial settings

Photometric Data

HML3 150W 5K

Input Voltage (VAC)	120-277
System Level Power (W)	148.4
Delivered Lumens (Lm)	21269
System Efficacy (Lm/W)	143.3
Correlated Color Temp (K)	5106
Color Rendering Index (CRI)	84
Horizontal Beam Angle (°)	88.8°
Vertical Beam Angle (°)	89.9°
Spacing Criteria (0-180)	1.24
Spacing Criterion (90-270)	1.24

HML3 320W 5K

Input Voltage (VAC)	120-277
System Level Power (W)	314.0
Delivered Lumens (Lm)	46289
System Efficacy (Lm/W)	147.4
Correlated Color Temp (K)	5250
Color Rendering Index (CRI)	83
Horizontal Beam Angle (°)	89.8°
Vertical Beam Angle (°)	90.7°
Spacing Criteria (0-180)	1.26
Spacing Criterion (90-270)	1.24

HML3 320W 5K HV

Input Voltage (VAC)	277-480
System Level Power (W)	314.3
Delivered Lumens (Lm)	46603
System Efficacy (Lm/W)	148.3
Correlated Color Temp (K)	5242
Color Rendering Index (CRI)	83
Horizontal Beam Angle (°)	89.8°
Vertical Beam Angle (°)	90.7°
Spacing Criteria (0-180)	1.26
Spacing Criterion (90-270)	1.24

HML3 550W 5K HV

Input Voltage (VAC)	120-277
System Level Power (W)	550.0
Delivered Lumens (Lm)	80850
System Efficacy (Lm/W)	147.0
Correlated Color Temp (K)	5143
Color Rendering Index (CRI)	83
Horizontal Beam Angle (°)	89.8°
Vertical Beam Angle (°)	90.7°
Spacing Criteria (0-180)	1.26
Spacing Criterion (90-270)	1.24

Ordering Information

Example: HML3320WSUSAS

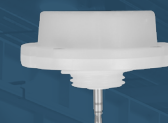
Series	Ver.	Wattage Selectable	Input Voltage	CCT Selectable	Distribution	Sensor Socket	CRI	Emergency	Wiring Options
HML	3	150S (10W/120W/150W)	U (120-277V)	S (35K/40K/50K/57K)	A (General - 90°x90°)	S (With Socket)	8 (80 CRI)	Blank	Blank
		320S (220W/270W/320W)	H (277-480V) ^{1,9}		B (Wide - 105°x105°)			E18 (18W) ^{2,5}	C (Cord-3-wire, 6ft) ⁶
		550S (480W/520W/550W)			C (Aisle - 45°x100°)			E25 (25W) ^{3,5}	C4 (Cord-4-wire, 6ft) ⁷
								E40 (40W) ^{4,5}	F (Flex Conduit - 6ft) ⁸

Specifications and dimensions subject to change without notice.

(Note: End user is responsible for proper selection of battery pack to meet NFPA requirements) 1.) High Voltage not available on 150W model 2.) 18W Emergency Pack is for 150W models only 3.) 25W Emergency Pack is for all models 4.) 40W Emergency Pack is for 320W model only 5.) Emergency not available on HV fixtures 6.) C Cord is 18/3 wire, 6' long, black. Other lengths available upon request 7.) C4 cord is 18/4 wire, 6' long, black, for use with Emergency enabled fixtures. Other lengths available upon request 8.) Flexible metal conduit is 6' long, 18/3 wire configuration. Other lengths available upon request 9.) Contact factory for lead-time

*NLC Compatible, see page 24 for details.

Accessories



Microwave Sensor



PIR Sensor



NLC PIR Sensor



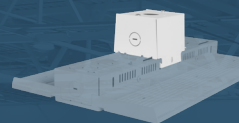
Wireguard



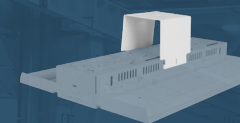
Sensor Remote



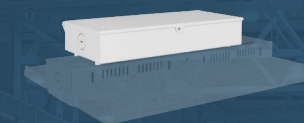
Aircraft Cable



Pendant Kit



Surface Kit



Emergency Battery Backup Kits (18W, 25W, and 40W options)

HBC4

Flat Optic Lens

Standard 90° optic to reduce glare

Hassle-Free Mounting

Mounting hook with locking bolt included for rapid installation

Reflectors

Optional reflectors available in aluminum and polycarbonate protect against indirect glare



Cast Aluminum Housing

Meets NSF rating and allows operation up to 50°C. Vented aluminum heatsink provides superior cooling while reducing fixture weight

Driver & LEDs

Provides long-lasting, efficient performance with uniform color and smooth distribution

HBC4 High-Performance LED High-Bay

The HBC LED Circular Low Bay/High Bay is a high-performance fixture that produces an output greater than 135 lumens per watt, includes an integrated socket for a field install motion sensor, 90-degree optic, and excellent color rendering at >80CRI. The die-cast aluminum heatsink design allows for a lightweight unit and with the multiple mounting options and accessories, the fixture can address a variety of applications. With consistent light distribution, this fixture is perfect for environments such as grocery stores, gymnasiums, big-box retail, and warehouse spaces.

Performance Data

Model #	Lumens	Watts	LPW
HBC4100U408	14945	102	147
HBC4100U508	15157	102	149
HBC4150U408	21549	152	142
HBC4150U508	21851	152	144
HBC4200U408	27998	200	140
HBC4200U508	28396	200	142
HBC4240U408	34446	241	143
HBC4240U508	34935	241	145
HBC4300U408	40557	297	137
HBC4300U508	41133	297	139
HBC4400U408	53747	392	137
HBC4400U508	54510	392	139

Fixture tested per LM-79-08. Photometric data is the performance of a representative fixture. Results may vary in the field.



Applications: Hangers, warehousing, and storage facilities

Photometric Data

100W 5000K

Input Voltage (VAC)	120-277
System Level Power (W)	102
Delivered Lumens (Lm)	15157
System Efficacy (Lm/W)	148.6
Correlated Color Temp (K)	5072
Color Rendering Index (CRI)	82
Beam Angle	88.8°
Spacing Criteria	1.34

150W 5000K

Input Voltage (VAC)	120-277
System Level Power (W)	151.7
Delivered Lumens (Lm)	21851
System Efficacy (Lm/W)	144
Correlated Color Temp (K)	5078
Color Rendering Index (CRI)	84
Beam Angle	88.3°
Spacing Criteria	1.39

200W 5000K

Input Voltage (VAC)	120-277
System Level Power (W)	199.9
Delivered Lumens (Lm)	28396
System Efficacy (Lm/W)	142.1
Correlated Color Temp (K)	4995
Color Rendering Index (CRI)	84
Beam Angle	88.8°
Spacing Criteria	1.28

240W 5000K

Input Voltage (VAC)	120-277
System Level Power (W)	241.4
Delivered Lumens (Lm)	34935
System Efficacy (Lm/W)	144.7
Correlated Color Temp (K)	5091
Color Rendering Index (CRI)	84
Beam Angle	87.5°
Spacing Criteria	1.28

300W 5000K

Input Voltage (VAC)	120-277
System Level Power (W)	296.7
Delivered Lumens (Lm)	41133
System Efficacy (Lm/W)	138.6
Correlated Color Temp (K)	5026
Color Rendering Index (CRI)	84
Beam Angle	85.3°
Spacing Criteria	1.41

400W 5000K

Input Voltage (VAC)	120-277
System Level Power (W)	392.3
Delivered Lumens (Lm)	54510
System Efficacy (Lm/W)	138.9
Correlated Color Temp (K)	5104
Color Rendering Index (CRI)	82
Beam Angle	81.1°
Spacing Criteria	1.38

Ordering Information

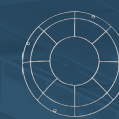
Example: HBC4240U408BK

Series	Version	Wattage	Voltage	CCT's	CRI	Finish
HBC	4	100 (102W - 15000 lm)	U (120-277VAC)	40 (4000K)	8 (80+)	BK (Black)
		150 (152W - 21500 lm)	H (277-480VAC)	50 (5000K)		WH (White)
		200 (200W - 28000 lm)				
		240 (241W - 34500 lm)				
		300 (297W - 40500 lm)				
		400 (392W - 53700 lm)				

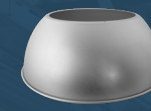
Specifications and dimensions subject to change without notice.

*NLC Compatible, see page 24 for details.

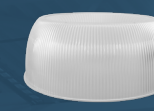
Accessories



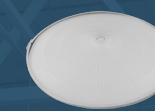
Wire Guard



90° Aluminum Reflector



90° Polycarbonate



Glare Shield



Pendant Mount Adapter



EMB400



HBC4REMOTE



U-Bracket



PIR Sensor



Microwave Motion Sensor

HBC5

Effortless Installation

Mounting hook with locking bolt included for secure installation. Optional Pendant and Yoke mounts are also available.



Die-Cast Aluminum Housing

Vented aluminum heatsink provides superior cooling while reducing fixture weight

Optic Lens

Includes 90° flat polycarbonate optic standard.

Selectable CCT



Selectable Wattages



Redesigned with Selectable Wattage and Color Temperature

The HBC5 LED Circular Low-Bay/High-Bay is a leading high-performance lighting solution with Selectable wattage, Selectable color temperature, and wireless control technology. With a sleek and compact form, it offers improved energy efficiency with low-voltage accessory features. The die-cast aluminum housing with integrated heatsink is designed with multiple mounting points for added options and accessories. The HBC5 produces an impressive light output exceeding 130 lumens per watt and excellent color rendering for true clarity. It features a 12V accessory socket for field-install sensors and Bluetooth control via the NICOR NLC app. The HBC5 is the ideal fixture for warehouses, retail stores, gymnasiums, and other large indoor spaces.

Performance Data

Model #	Normal Operation				40W EM
	CCT	Lumens	Watts	LPW	Lumens
HBC5150SUS8	3500	13396		134	5358
	4000	14472	100	145	5789
	5000	13561		136	5424
	3500	16075		134	5358
	4000	17366	120	145	5789
	5000	16274		136	5424
HBC5240SUS8	3500	20094		134	5358
	4000	21708	150	145	5789
	5000	20342		136	5424
	3500	27183		136	5437
	4000	29140	200	146	5828
	5000	27545		138	5509
HBC5240SUS8	3500	29901		136	5437
	4000	32054	220	146	5828
	5000	30300		138	5509
	3500	32619		136	5437
	4000	34968	240	146	5828
	5000	33054		138	5509

Fixture tested per LM-79-08. Photometric data is the performance of a representative fixture. Results may vary in the field.

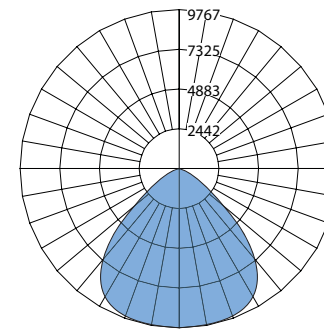


Applications: Warehouses, retail stores, gymnasiums, and other large indoor spaces.

Photometric Data

150W 5000K

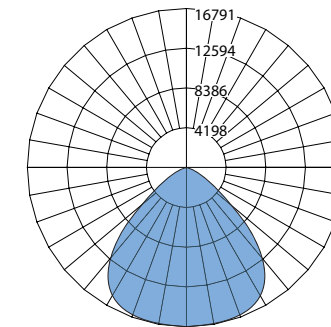
Input Voltage (VAC)	120-277
System Level Power (W)	150.1
Delivered Lumens (Lm)	20342
System Efficacy (Lm/W)	135.5
Correlated Color Temp (K)	5131
Color Rendering Index (CRI)	82
Beam Angle	90.8
Spacing Criteria	1.37



150W

240W 5000K

Input Voltage (VAC)	120-277
System Level Power (W)	243.6
Delivered Lumens (Lm)	33540
System Efficacy (Lm/W)	137.7
Correlated Color Temp (K)	5092
Color Rendering Index (CRI)	84
Beam Angle	90.8
Spacing Criteria	1.30



240W

Ordering Information

Series	Version	Wattage	Voltage	CCT's	CRI	Finish
HBC	5	150S (100W/120W/150W)	U (120-277VAC)	S (3500K/4000K/5000K)	8 (80+)	BK (Black)
		240S (200W/220/240W)				WH (White)

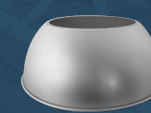
Example: HBC5150SUS8BK

Specifications and dimensions subject to change without notice.

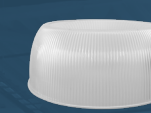
Accessories



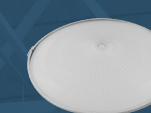
Wire Guard



90° Aluminum Reflector



90° Polycarbonate



Polycarbonate Glare Shield



Pendant Mount Adapter



U-Bracket



PIR Sensor



Microwave Motion Sensor



HBC4REMOTE



Emergency Backup



EM Remote



NLC Wireless

HBC6

Die-Cast Aluminum Housing

Ultra-slim design with an off-board driver enhances thermal management. The vented aluminum heatsink offers superior cooling while reducing the weight of the fixture.

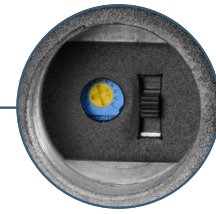
Features Selectable Beam Angle Switching without the need to field swap lens.

The HBC6 LED Circular Low-Bay/High-Bay is a leading high-performance lighting solution with selectable wattage, selectable color temperature, selectable beam angle, and wireless control technology. With a sleek and compact form, it offers improved energy efficiency with low-voltage accessory features. The die-cast aluminum housing with integrated heatsink is designed with multiple mounting points for added options and accessories. The HBC6 produces an impressive light output exceeding 135 lumens per watt and excellent color rendering for true clarity. The impact-resistant polycarbonate lens provides consistent light dispersion, while optional reflectors help reduce glare and provide specific light distribution. The HBC6 operates at 120-277V with 0-10V dimming and a 12V accessory wire for standard or smart (NLC) sensors. Add a 40W emergency backup for added safety and security. The HBC6 is the ideal fixture for warehouses, retail stores, gymnasiums, and other large indoor spaces.



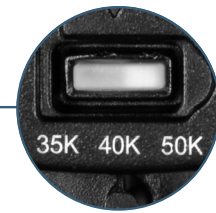
Effortless Installation

A locking bolt hook is included for secure mounting. Available accessories include a 3/4" NPT pendant adapter, yoke, and lens wire guard.



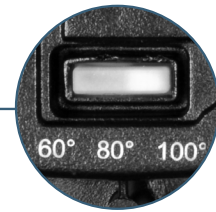
Selectable Wattage

Low Med High



Selectable CCT

35K 40K 50K



Selectable Beam Angle

60° 80° 100°

Performance Data

80° Beam Angle				
Model #	CCT	Lumens	Watts	LPW
HBC6150SUS8	3500	13396	100	135.3
	4000	13997		149.4
	5000	13419		138.0
	3500	16039	120	135.3
	4000	16796		149.4
	5000	16102		138.0
HBC6240SUS8	3500	20049	150	135.3
	4000	20995		149.5
	5000	20128		138.0
	3500	28225	200	140.3
	4000	30256		155.7
	5000	29135		145.2
HBC6240SUS8	3500	31048	220	140.3
	4000	33281		155.7
	5000	32049		145.2
	3500	32616	240	135.1
	4000	34962		149.9
	5000	33667		139.8

*See spec sheet for more information on the performance data. Fixture tested per LM-79-08. Photometric data is of the performance of a representative fixture. Results may vary in the field.



Applications: Warehouses, retail stores, gymnasiums, and other large indoor spaces.

Photometric Data

150W 5000K 60°

Input Voltage (VAC)	120-277
System Level Power (W)	145.9
Delivered Lumens (Lm)	20128
System Efficacy (Lm/W)	138.0
Correlated Color Temp (K)	4953
Color Rendering Index (CRI)	83
Beam Angle	64.0
Spacing Criteria	0.94

150W 5000K 80°

Input Voltage (VAC)	120-277
System Level Power (W)	139.8
Delivered Lumens (Lm)	22325
System Efficacy (Lm/W)	159.7
Correlated Color Temp (K)	4960
Color Rendering Index (CRI)	83
Beam Angle	76
Spacing Criteria	1.05

150W 5000K 100°

Input Voltage (VAC)	120-277
System Level Power (W)	149.5
Delivered Lumens (Lm)	21142
System Efficacy (Lm/W)	141.4
Correlated Color Temp (K)	4957
Color Rendering Index (CRI)	83
Beam Angle	100.4
Spacing Criteria	1.39

240W 5000K 60°

Input Voltage (VAC)	120
System Level Power (W)	240.8
Delivered Lumens (Lm)	33667
System Efficacy (Lm/W)	139.8
Correlated Color Temp (K)	4897
Color Rendering Index (CRI)	83
Beam Angle	59.7
Spacing Criteria	0.98

150W 5000K 80°

Input Voltage (VAC)	120-277
System Level Power (W)	229.4
Delivered Lumens (Lm)	36981
System Efficacy (Lm/W)	161.2
Correlated Color Temp (K)	4900
Color Rendering Index (CRI)	83
Beam Angle	74.9
Spacing Criteria	1.05

150W 5000K 100°

Input Voltage (VAC)	120-277
System Level Power (W)	241.3
Delivered Lumens (Lm)	34213
System Efficacy (Lm/W)	141.8
Correlated Color Temp (K)	4903
Color Rendering Index (CRI)	83
Beam Angle	97.3
Spacing Criteria	1.4

Ordering Information

Example: HBC6150SUS8BK

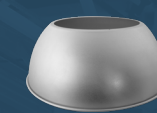
Series	Version	Wattage	Voltage	CCT's	CRI	Finish
HBC	6	150S (100W/120W/150W)	U (120-277VAC)	S (3500K/4000K/5000K)	8 (80+)	BK (Black)
		240S (200W/220W/240W)				WH (White)

Specifications and dimensions subject to change without notice.

Accessories



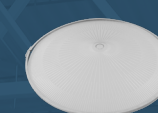
Wire Guard



90° Aluminum Reflector



90° Polycarbonate



Polycarbonate Glare Shield



Pendant Mount Adapter



U-Bracket



Microwave Motion Sensor



PIR Sensor



H12V2-Remote



Emergency Backup



EM Remote

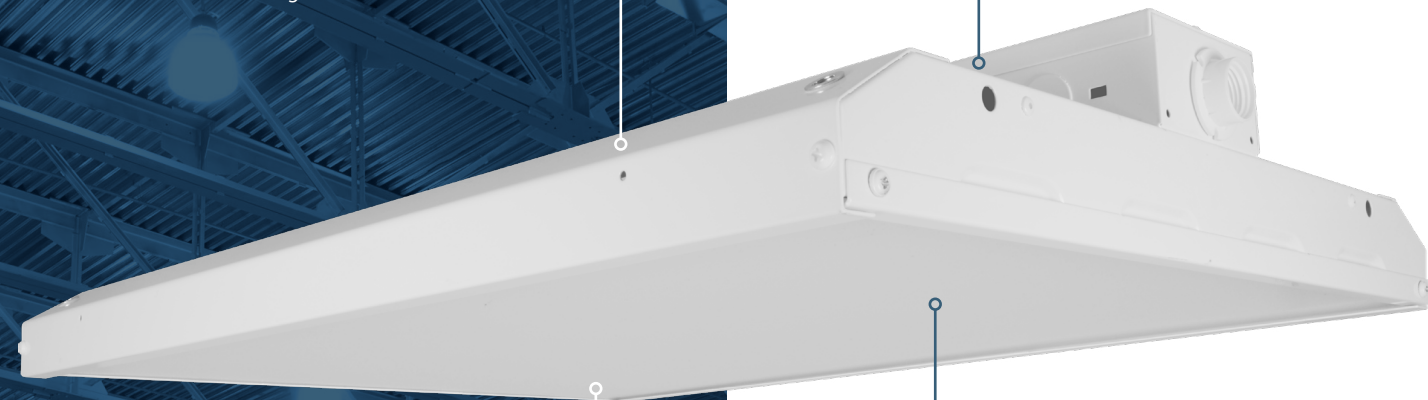


NLC Wireless

HBL4

Rounded Edges

Smooth rounded edges provide safer handling of fixture



Wireway Compartment

Easy access to wiring makes installation hassle-free

Surge Protection

Built-in 10kA surge protection standard, 20kA for high-voltage

Lens Options

Standard diffused lens to control glare

High Efficacy LEDs

Provides long-lasting, efficient performance with uniform color and light distribution greater than 130 LPW

HBL4 the NICOR Workhorse

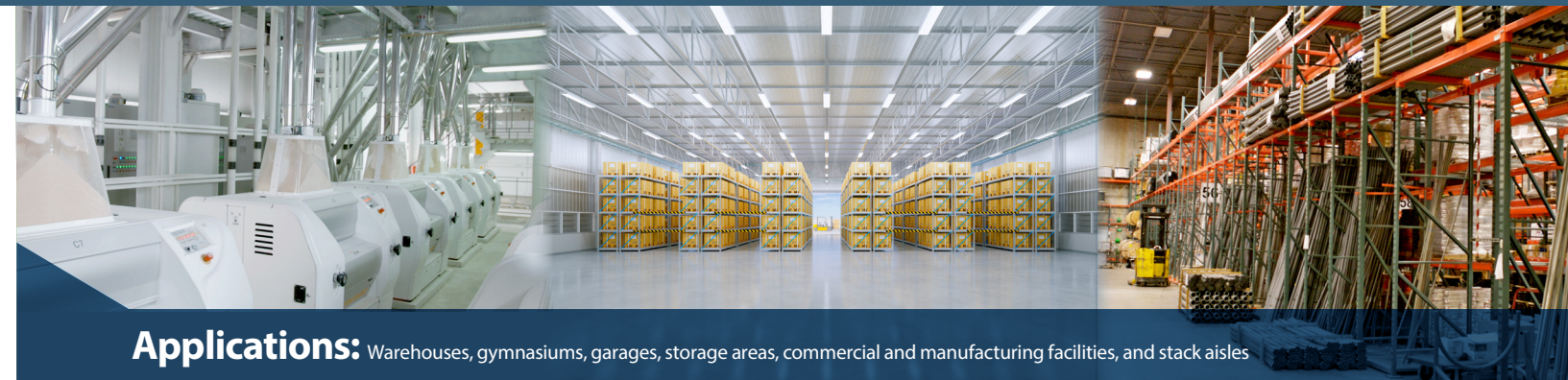
The HBL is the lighting solution for a wide variety of applications and mounting heights. The energy-efficient luminaire offers a long life, even uniformity, and a variety of accessories and options. The economical solution for industrial, commercial, and other high bay applications.

Performance Data				25W Emergency
Model #	Lumens	Watts	LPW	Lumens
HBL4105UV4K	14780	106.0	139.4	3486
HBL4105UV5K	14914		140.7	3517
HBL4155UV4K	21460	154.9	138.5	3463
HBL4155UV5K	21546		139.1	3477
HBL4210UV4K	27302	205.2	133.1	3326
HBL4210UV5K	27550		134.3	3356
HBL4300UV4K	41178	304.8	135.1	3377
HBL4300UV5K	41933		137.6	3439



Hassle-Free Mounting

Easy mounting with chain and hook or optional pendant kit



Applications: Warehouses, gymnasiums, garages, storage areas, commercial and manufacturing facilities, and stack aisles

Photometric Data

105W 5000K

Input Voltage (VAC)	120-277
System Level Power (W)	106.0
Delivered Lumens (Lm)	14914
System Efficacy (Lm/W)	140.7
Correlated Color Temp (K)	5000
Color Rendering Index (CRI)	80
Beam Angle (0)	104.0°
Beam Angle (90)	104.9°
Spacing Criteria (0)	1.26
Spacing Criteria (90)	1.26

155W 5000K

Input Voltage (VAC)	120-277
System Level Power (W)	154.9
Delivered Lumens (Lm)	21546
System Efficacy (Lm/W)	139.1
Correlated Color Temp (K)	5000
Color Rendering Index (CRI)	80
Beam Angle (0)	103.4°
Beam Angle (90)	104.5°
Spacing Criteria (0)	1.26
Spacing Criteria (90)	1.26

210W 5000K

Input Voltage (VAC)	120-277
System Level Power (W)	205.2
Delivered Lumens (Lm)	27550
System Efficacy (Lm/W)	134.3
Correlated Color Temp (K)	5000
Color Rendering Index (CRI)	80
Beam Angle (0)	102.4°
Beam Angle (90)	102.9°
Spacing Criteria (0)	1.24
Spacing Criteria (90)	1.24

300W 5000K

Input Voltage (VAC)	120-277
System Level Power (W)	304.8
Delivered Lumens (Lm)	41933
System Efficacy (Lm/W)	137.6
Correlated Color Temp (K)	5000
Color Rendering Index (CRI)	80
Beam Angle (0)	102.3°
Beam Angle (90)	104.3°
Spacing Criteria (0)	1.26
Spacing Criteria (90)	1.24



15,000Lm



27,500Lm



42,000Lm

Ordering Information

Example: HBL4105UV4KEC

Series	Version	Wattage	Input Voltage	12V Output	CCT's	Sensor	Emergency	Wiring Option
HBL	4	105 (14700 lm)	U (120-277V)	V (12VDC Output)	4K (4000K)	Blank (None)	__ (None)	__ (None)
		155 (21500 lm)	H (347-480V) ⁵		5K (5000K)	P (HBO11-PDX) ⁴	E (EMB250)	C (3-Wire Cord) ²
		210 (27300 lm)				R (MWO360R2) ⁴		C4 (4-Wire Cord) ²
		300 (41000 lm)						F (Flexible Metal Conduit) ³

Specifications and dimensions subject to change without notice. 1.) Field installed plugs are placed inside the carton for field attachment only. Plug not available on emergency enabled fixtures 2.) Cord is 18/3 wire, 6' long, black. Consult factory for other lengths. 3.) Flexible metal conduit is 6' long, 18/3 wire configuration. Consult factory for other lengths. 4.) Factory installed sensor 5.) H (High Voltage) not available for 300W

*NLC Compatible, see page 24 for details.

Accessories



HBN

Durability & Protection

Single-piece, die-cast aluminum body with gasketed lens and powder coated finish



Rated to withstand extreme temperatures from -40°C to 65°C (-40°F to 149°F)



IP69K Rated - Provides resistance against high-pressure and extreme temperatures



IK10 Rated impact protection when paired with Polycarbonate lens



NSF Certified Food Zone, Splash Zone, and Non-Food Zone to meet strict safety and sanitation requirements

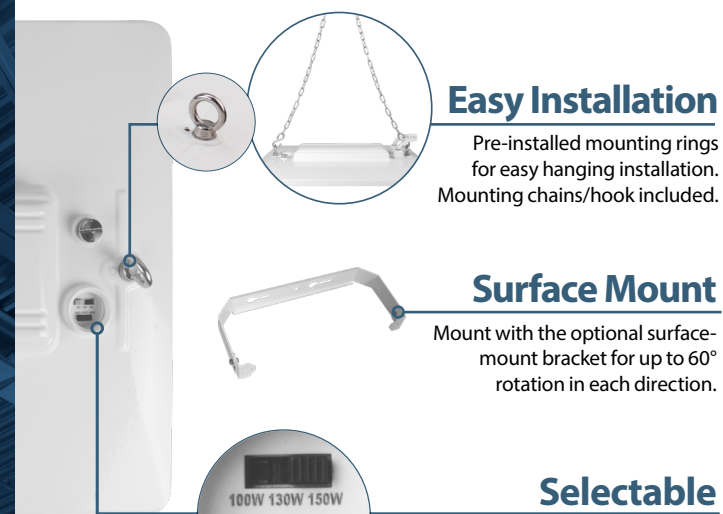
Energy Savings & Smart Control

Integrates seamlessly with advanced lighting controls for enhanced energy efficiency

HBN Series

Introducing the new HBN Series NSF Rated LED High-Bay, designed for optimal performance in commercial and industrial environments. This fixture combines energy efficiency with robust construction, making it ideal for warehouses, food processing facilities, and manufacturing plants. With NSF certification, it ensures compliance with stringent safety and sanitation standards, perfect for food and beverage processing areas. Featuring an IP69K rating, it offers exceptional protection against dust and high-pressure, high temperature water jets, making it suitable for even the most demanding environments. Equipped with selectable wattage and color temperature (CCT), you can easily customize the lighting to suit your specific needs, providing flexibility and efficiency. Its durable design withstands harsh conditions, ensuring longevity and reliability, while versatile mounting options allow for easy adaptation to various ceiling heights and layouts. The user-friendly design facilitates quick installation with minimal downtime, and it is compatible with smart controls for enhanced energy savings and control.

Elevate your facility's lighting with our NSF Rated LED High-Bay, where performance meets compliance and efficiency, creating a safe and productive environment.



Easy Installation

Pre-installed mounting rings for easy hanging installation. Mounting chains/hook included.

Surface Mount

Mount with the optional surface-mount bracket for up to 60° rotation in each direction.

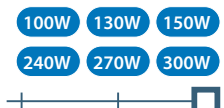
Selectable

Selectable wattage & CCT enable easy customization for optimal performance and efficiency

Selectable CCT



Selectable Wattage



Performance Data

150W - Universal Voltage

Model #	CCT	Lumens	Watts	LPW
HBN1150SUSA8	3500	16495	101.4	162.7
	4000	16894	97.2	173.8
	5000	16260	96.0	169.4
	3500	21342	131.2	162.7
	4000	21859	125.9	173.7
	5000	21039	124.9	168.4

300W - Universal Voltage

Model #	CCT	Lumens	Watts	LPW
HBN1300SUSA8	3500	39835	242	164.9
	4000	40718	232	175.7
	5000	39735	239	166.5
	3500	43693	270	161.8
	4000	45026	259	173.8
	5000	43887	268	163.7
	3500	47854	302	158.6
	4000	49609	289	171.8
	5000	48745	303	161.1



With PC Lens

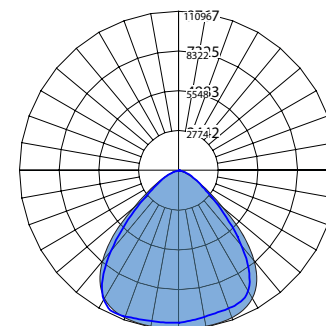


Applications: Food processing facilities, food storage facilities, warehouses, and manufacturing plants.

Photometric Data

HBN 150W 5000K

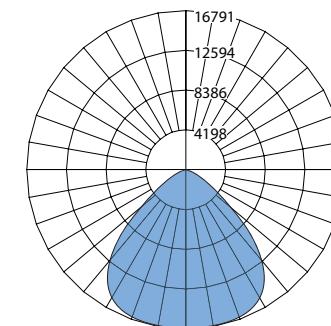
Input Voltage (VAC)	120-347V
System Level Power (W)	143.9
Delivered Lumens (Lm)	24037
System Efficacy (Lm/W)	167.0
Correlated Color Temp (K)	5052
Color Rendering Index (CRI)	83
Beam Angle (0)	87.5°
Beam Angle (90)	87.6°
Spacing Criteria (0)	1.34
Spacing Criteria (90)	1.30



150W

HBN 300W 3500K

Input Voltage (VAC)	120-347V
System Level Power (W)	302.1
Delivered Lumens (Lm)	47854
System Efficacy (Lm/W)	158.4
Correlated Color Temp (K)	3423
Color Rendering Index (CRI)	84
Beam Angle (0)	87.1°
Beam Angle (90)	88.2°
Spacing Criteria (0)	1.24
Spacing Criteria (90)	1.18



300W

Ordering Information

Example: HBN1150SUSA8

Series	Version	Wattage Selectable	Input Voltage	CCT Selectable	Lens Type	CRI
HBN	1	150S (100W/130W/150W)	U (120-347VAC)	S (3500K/4000K/5000K)	A (Polycarbonate) ¹	8 (80+ CRI)
		300S (240W/270W/300W)			B (Glass) ²	

Specifications and dimensions subject to change without notice. 1.) Achieves IK10 rating with polycarbonate lens only. 2.) Achieves IK06 rating with glass lens only.

*NLC Compatible, see page 24 for details.

Accessories



PIR Sensor



Microwave Sensor



NLC Bluetooth Controls



H12V2-Remote



Voltage Transformer



Wireguard



Emergency Backup

Side-by-Side Comparison: LED Low/High-Bay Breakdown

HML3

The HML3 is a compact, high-performance LED high bay featuring adjustable wattage and color temperature settings with multiple lens options. This patent-pending HML3 was designed with a durable cast-aluminum body with integrated cooling features making it ideal for warehouses, gyms, and industrial spaces. With easy wire access and a tough powder-coat finish, the HML3 blends innovation, durability, and efficiency.



HBL4

The HBL4 LED Linear Low Bay/High Bay offers higher performance, DLC 5.1 Premium certification, and over 130 lumens per watt. Designed to replace metal halide and fluorescent systems, it delivers long life, excellent color, and uniform light—ideal for warehouses, gyms, garages, and commercial spaces.



HBC5

The HBC5 LED Circular Low/High-Bay offers selectable wattage and color temperature, wireless controls, and 130+ lumens per watt efficiency. The compact HBC5 is available in black or white and supports multiple mounts, reflectors, controls, sensors, and optional emergency backup. It's ideal for warehouses, gyms, retail spaces, and other open areas.



HBN

NICOR's NSF Rated LED High-Bay delivers on energy efficiency, durability, and compliance with stringent safety and sanitation standards, perfect for food processing and manufacturing areas. Featuring an IP69K rating, it offers exceptional protection against dust, high-pressure, and high-temperature water jets, making it suitable for even the most demanding environments.



- Input Voltage
- CCT Options
- Wattage Options
- Delivered Lumens
- DeSystem Efficacy
- DLC
- Lens Options
- Accessory Port
- Dimming
- Operating Temperature
- Surge Protection
- TM-21 L70 Lifespan
- Motion Sensors
- Accessory Options
- Mounting Options
- Battery Backup
- Warranty
- Certifications

Input Voltage	120-277VAC or 277-480VAC		
CCT Options	3500K/4000K/5000K/5700K		
Wattage Options	100/120/150W	220/270/320W	480/520/550W ¹
Delivered Lumens	14,000/17,000/21,000 Lm	32,000/39,000/46,000 Lm	70,000/75,000/80,000 Lm
DeSystem Efficacy	>139 Lm/W	>142 Lm/W	>142 Lm/W
DLC	DLC 5.1 Premium ² or DLC 5.1 Standard ³		
Lens Options	General (90°x90°)	Wide (105°x105°)	Aisle (45°x100°)
Accessory Port	12VDC Accessory Port for Sensors and Controls		
Dimming	0-10VDC (Full-Range)		
Operating Temperature	-22°F to 131°F (-30°C to 55°C)		
Surge Protection	10kA Surge Protection		
TM-21 L70 Lifespan	>60,000 Hours		
Motion Sensors	NLC Wireless Controls, Microwave Sensors, PIR Sensors		
Accessory Options	Wireguards, Emergency Backup, HV Transformer, Cords, Conduit, Plugs		
Mounting Options	V-Hook and Chain, Aircraft Cables, Pendant Mount, Surface Mount		
Battery Backup	18W ⁴	25W ⁴	40W ⁵
Warranty	5-Year Limited Warranty		
Certifications			

Input Voltage	120-277VAC or 347-480VAC ¹			
CCT Options	4000K or 5000K			
Wattage Options	105W	155W	210W	300W
Delivered Lumens	14,700Lm	21,500 Lm	27,300 Lm	41,000 Lm
DeSystem Efficacy	140 Lm/W	139 Lm/W	134 Lm/W	137 Lm/W
DLC	DLC 5.1 Premium ²			
Lens Options	Wide (105°x105°)			
Accessory Port	12VDC Accessory Port for Sensors and Controls			
Dimming	0-10VDC (Full-Range)			
Operating Temperature	-40°F to 122°F (-40°C to 50°C)			
Surge Protection	10kA Surge Protection			
TM-21 L70 Lifespan	>72,000 Hours			
Motion Sensors	NLC Wireless Controls, Microwave Sensors, PIR Sensors			
Accessory Options	Wireguards, Emergency Backup, HV Transformer, Cords, Conduit, Plugs			
Mounting Options	V-Hook and Chain, Aircraft Cables, Pendant Mount, Surface Mount ³			
Battery Backup	25W ⁵	40W ⁶		
Warranty	5-Year Limited Warranty			
Certifications				

Input Voltage	120-277VAC or 277-480VAC ¹		
CCT Options	3500K/4000K/5000K		
Wattage Options	100/120/150W	200/220/240W	240/270/300W ¹
Delivered Lumens	14,000/16,000/20,000 Lm	28,000/30,000/33,000 Lm	35,000/39,000/43,000 Lm
DeSystem Efficacy	>134 Lm/W	>136 Lm/W	>140Lm/W
DLC	DLC 5.1 Premium		
Lens Options	115° Polycarbonate Optic ²	90° Polycarbonate Reflector	90° Aluminum Reflector
Accessory Port	12VDC Accessory Port for Sensors and Controls		
Dimming	0-10VDC (Full-Range)		
Operating Temperature	-40°F to 122°F (-40°C to 50°C) ³		
Surge Protection	6kV Ring Wave and 6kV/3kA Combination Wave		
TM-21 L70 Lifespan	>54,000 Hours		
Motion Sensors	NLC Wireless Controls, Microwave Sensors, PIR Sensors		
Accessory Options	Reflectors, Glare Shields, Wireguards, Emergency Backup, HV Transformer		
Mounting Options	Hook with Locking Bolt, Pendant Mount, Yoke Mount		
Battery Backup	40W ⁴		
Warranty	5-Year Limited Warranty		
Certifications			

Input Voltage	120-347VAC	
CCT Options	3500K/4000K/5000K	
Wattage Options	100/130/150W	240/270/300W
Delivered Lumens	16,000/21,000/24,000 Lm	39,000/43,000/48,000 Lm
DeSystem Efficacy	>162 Lm/W	>158 Lm/W
DLC	DLC 5.1 Premium ¹ or DLC 5.1 Standard ²	
Lens Options	90° Polycarbonate Lens ³	Tempered Glass Lens ⁴
Accessory Port	12VDC Accessory Port for Sensors and Controls	
Dimming	0-10VDC (Full-Range)	
Operating Temperature	-40°F to 149°F (-40°C to 65°C)	
Surge Protection	L/N-PE: 10kV, L-N: 10kV (with supplemental SPD)	
TM-21 L70 Lifespan	>60,000 Hours	
Motion Sensors	NLC Wireless Controls, Microwave Sensors, PIR Sensors	
Accessory Options	Wireguards, Emergency Backup, HV Transformer, Cords, Conduit, Plugs	
Mounting Options	Pre-Installed Mounting Rings, Mounting Chains, Surface Mount Bracket	
Battery Backup	16W ⁵	25W ⁶
Warranty	5-Year Limited Warranty	
Certifications		

1. 550W models available via special order. Contact NICOR for lead-times.
 2. DLC 5.1 Premium listed with use of General Optic (90°x90°).
 3. DLC 5.1 Standard listed with use of Wide (105°x105°) or Aisle (45°x100°) Optics.
 4. Compatible with 150W (120-277VAC) models only.
 5. Compatible with 320W (120-277VAC) models only.
 6. ASHRAE 90.1 Compliant when specified with sensor option.

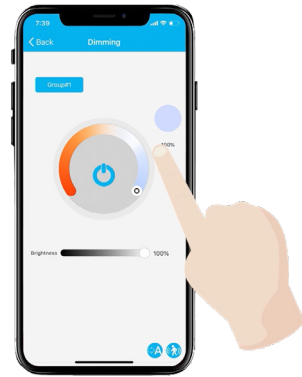
1. Not available on 300W models.
 2. Applicable to 120-277VAC models only. Excludes 347-480VAC models.
 3. Surface mount kits available in Wide and Narrow options.
 4. ASHRAE 90.1 Compliant when specified with sensor option.
 5. Compatible with 105W, 155W, and 210W (120-277VAC) models only.
 6. Compatible with 300W (120-277VAC) models only.

1. 300W (277-480VAC) models not available in white.
 2. 90° Polycarbonate optic included.
 3. -22°F to 122°F (-30°C to 50°C) with sensor installed.
 4. Compatible with 120-277VAC models only.

1. DLC 5.1 Premium listed with use of Polycarbonate Lens.
 2. DLC 5.1 Standard listed with use of Tempered Glass Lens.
 3. 90° Polycarbonate lens achieves IK10 rating for impact resistance. Standard equipped.
 4. Tempered Glass Lens achieves IK06 rating for impact resistance. Contact NICOR for lead-times.
 5. Cold Weather option available. Compatible with 150W models only.
 6. Cold Weather option available. Compatible with 300W models only.
 7. NSF Food Zone Non-Contact, Splash Zone, and Non Food Zone rated.
 8. ASHRAE 90.1 Compliant when specified with sensor option.

Lighting Controls

NICOR's Network Lighting Controls (NLC) is a wireless network of components comprised of passive infrared (PIR) motion/daylight sensors, load controllers, power packs, wall controls and system nodes. Each component utilizes Bluetooth Low Energy (BLE) Mesh to remotely control and operate luminaires separately or together as a zone. The NLC system can control up to 100 luminaires per zone across multiple rooms with NICOR's NLC app, available on major app marketplaces.



Three Levels of Lighting Control



Single Luminaire



Room



Building

Emergency Backups

Power failures happen, and you need to be prepared. Our line of emergency drivers provide constant power with a consistent lumen output for 90 minutes. Not sure which driver is right for your project? Reach out to our application engineers to help determine the best solution for your emergency lighting needs.

HML Battery Backup

- HML1EM18WRVWH 18W Battery Pack (120-347V)
- HML1EM25WRVWH 25W Battery Pack (120-347V)
- HML1EM40WRVWH 40W Battery Pack (120-347V)

For installation in the field by the end user

- 18W & 25W Emergency Packs are for 150W models only
- 40W Emergency Pack is for 320W models only
- End user is responsible for proper selection of battery pack to meet NFPA requirements
- Emergency not available on HV fixtures



Why NICOR NLC?

Take Control

NICOR's NLC app provides an intuitive, easy-to-use interface to control the full assortment of NLC components. Available on Android and iOS.

System Ready

NICOR's Network Lighting Controls system is designed with simple scaling solutions in mind. All devices are compatible with new and existing framework.

Flexible Solutions

The NLC system features simple scaling solutions to easily add controls to new or existing networks with downward compatible software updates while maintaining seamless, uninterrupted operation.

NICOR NLC Features:

- DLC NLC5 Listed
- Meets or exceeds energy codes for lighting controls
- Flexible grouping/zoning
- Occupancy/vacancy control
- Scheduling
- Daylight responsive control
- Task tuning/high-end trim
- Full dimming
- Energy monitoring
- Networked – Bluetooth Low-Energy Mesh (BLE)
- Building management system integration
- Meets DLC NLC5 Encrypted Security
- Wireless battery wall stations



Scan QR for the latest NLC brochure

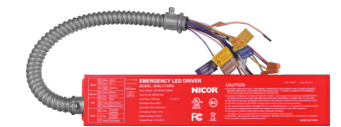
EMB4002

40W max output on any fixture up to 300W. Easily test your emergency lighting monthly and yearly to meet NFPA 101® without the need of a ladder, using the optional remote control for unbeatable convenience!



EMA025

Outputs 25W (constant)



EMA40

Outputs 40W (constant)



California's Appliance Efficiency Regulations require all state-regulated small battery charger systems meet the energy efficiency requirements of Title 20 and be marked with a "BC" inside a circle. All NICOR battery packs meet these requirements, ensuring the best possible energy efficiency and performance.

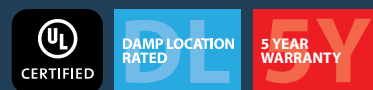
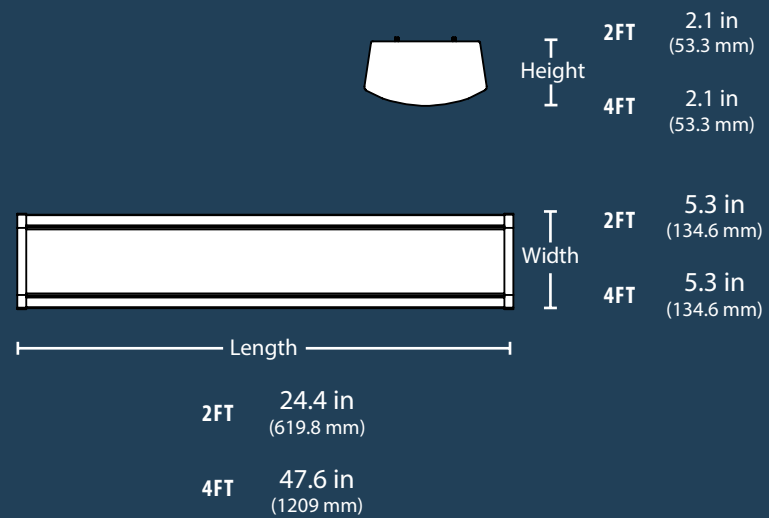


WPC3

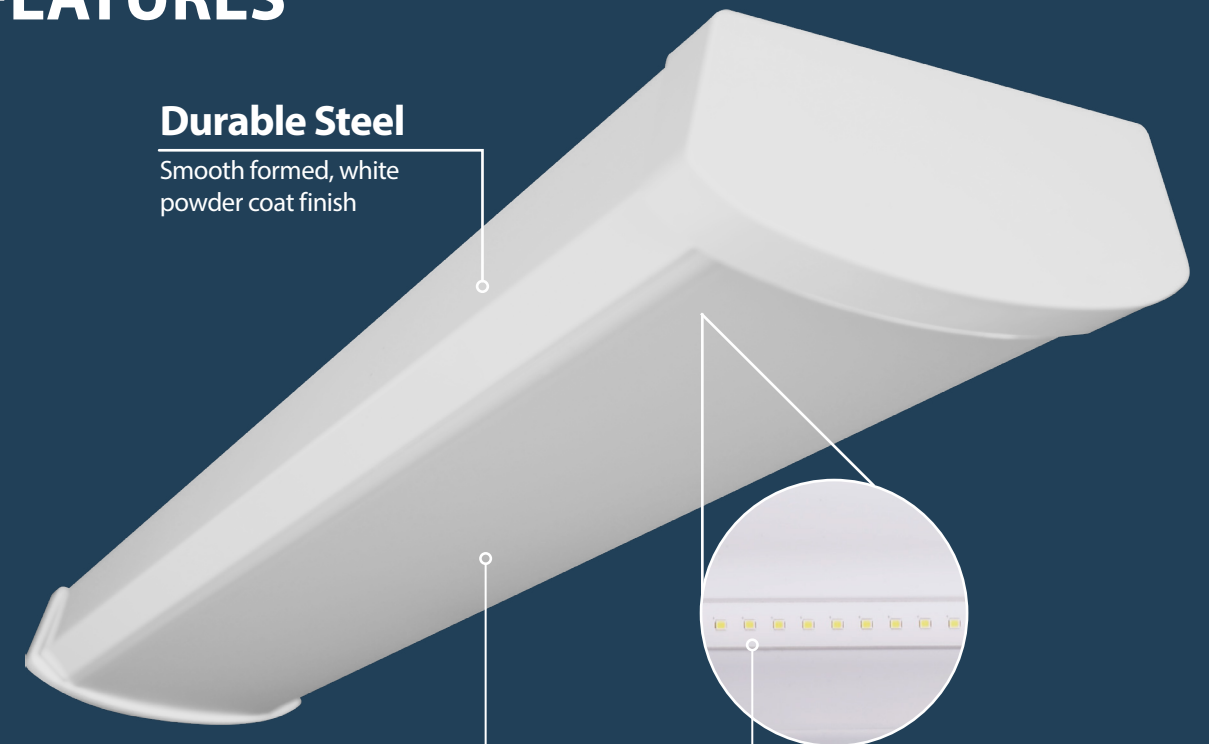
LED Linear Wrap

The WPC3 LED Linear Wrap is an economical, energy-efficient lighting alternative to traditional fluorescent wrap fixtures. The WPC3's modern design features a curved, milky white lens that offers a more polished aesthetic while eliminating hot spots. Available with CCT and lumen output Selectable options with the choice of 3500K, 4000K, or 5000K CCTs and low, medium, and high lumen output. This versatile fixture is easy to surface mount on both ceilings and walls, making it ideal for general ambient lighting in retail, warehouse, residential utility, and light commercial or industrial applications.

Dimensions



FEATURES



Durable Steel

Smooth formed, white powder coat finish

Precision Engineered Diffuser

Provides high uniformity and reduced glare

High Performance LEDs

Energy efficient providing over 120 lumens per Watt



CRI 80+
Lumens 1995-5814
Lifetime >50000 hrs
Beam Angle 97°-99°

Select the Perfect Light

The WPC3 LED Linear Wrap features Selectable CCT and Wattage for the perfect ambiance. The selector switch is discretely located on the driver.

35K 40K 50K
 Low Med High

Ordering Information

Example: WPC3448WSUS8WH

Series	Version	Length	Wattage (Selectable)	Voltage	CCT	CRI	Color
WPC	3	2 (2 FT)	24WS (16/20/24W)	U (120-277V)	S (3500K/4000K/5000K)	8 (80+)	WH (White)
		4 (4 FT)	48WS (32/40/48W)				

Specifications and dimensions subject to change without notice.

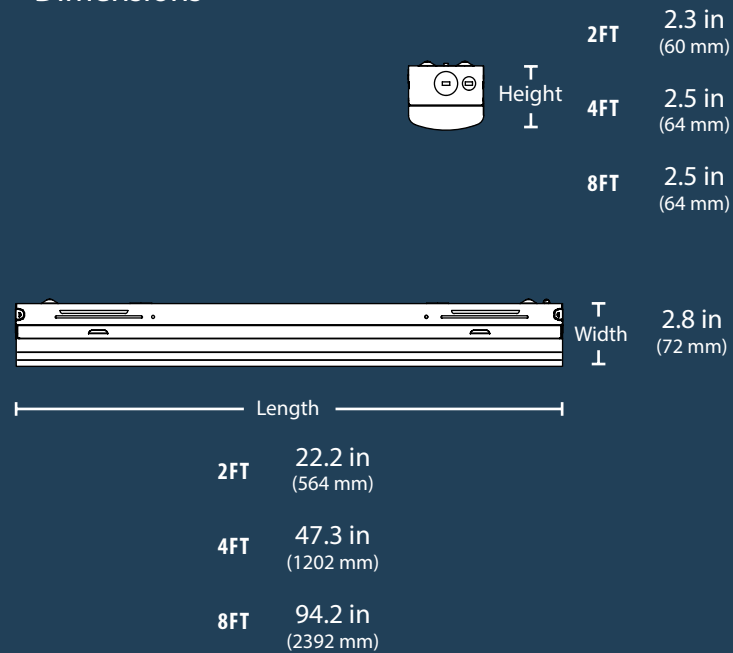


LSL1

Selectable LED Linear Strip

The LSL LED Linear Strip offers selectable light output and CCT, delivering optimal performance and long life in a slim design ideal for general ambient lighting in retail, warehouse, residential utility, and light commercial or industrial applications. This versatile fixture is easy to surface mount on both ceilings and walls and can accommodate end-to-end runs. The LSL features a toolless access lens module that is easily removed from the back channel for simple installation. The lens features a semi-circular, milky-white lens that offers a more polished aesthetic while eliminating hot spots, and is an economical, energy efficient lighting alternative to single-lamp fluorescent strips and some wraparound fixtures. For even greater energy savings, optional controls, including factory-installed microwave occupancy sensors are available.

Dimensions



FEATURES

Easy Installation

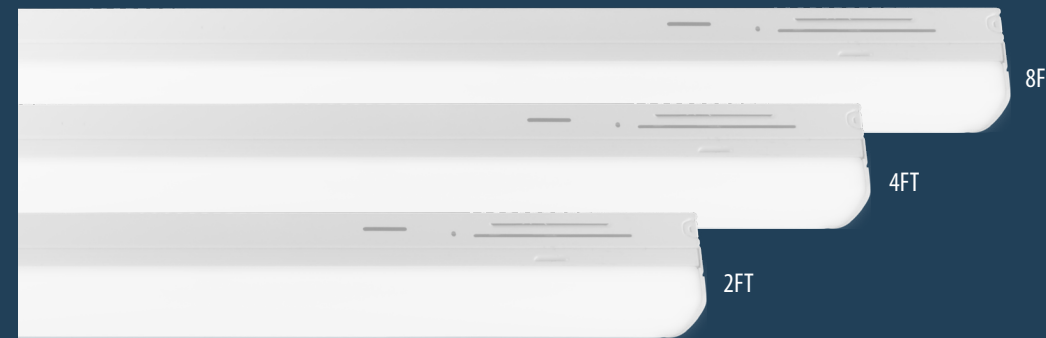
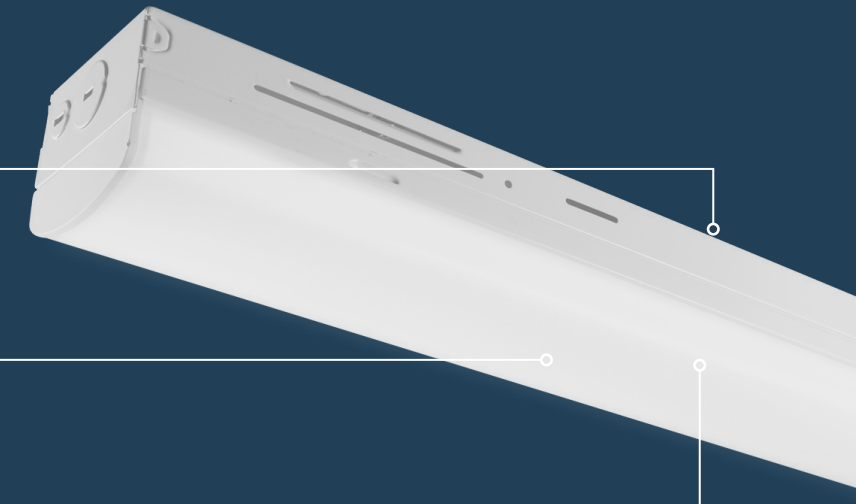
Safety strap-retained LED array allows for single person installation

Optional Occupancy Sensor

Increase energy efficiency with the optional microwave occupancy sensor kit

Cover Plates

Cover plates provided for 4/0 box surface installation



- CRI** 83+
- Input** 120-277VAC
- Lifetime** >100,000 hrs
- Dimming** 0-10VDC

- CRI** 83+
- Input** 120-277VAC
- Lifetime** >100,000 hrs
- Dimming** 0-10VDC

Select the Perfect Light

The LSL1 LED Linear Strip features Selectable CCT and Wattage for the perfect ambiance. The selector switch is discretely located on the driver.

35K 40K 50K

Low Med High

Ordering Information									Example: LSL1445SUS8		
Series	Version	Length	Wattage (Selectable)	Voltage	CCT	CRI	Control	Emergency			
LSL	1	2 (2 FT)	25S (15/20/25W) ²	U (120-277V)	S (3500K/4000K/5000K)	8 (80CRI-Standard)	(Blank)	(Blank)			
		4 (4 FT)	45S (34/38/45W) ³						9 (90CRI-Special Order)*	M (Microwave Sensor)	EM4 (4W) ²
		8 (8 FT)	90S (65/75/90W) ⁴								EM8 (8W) ^{3,4}
									EM16 (16W) ^{3,4}		

Specifications and dimensions subject to change without notice. 1.) Only available on 4' model. 2.) 2 foot fixture only. 3.) 4 foot fixture only. 4.) 8 foot fixture only.

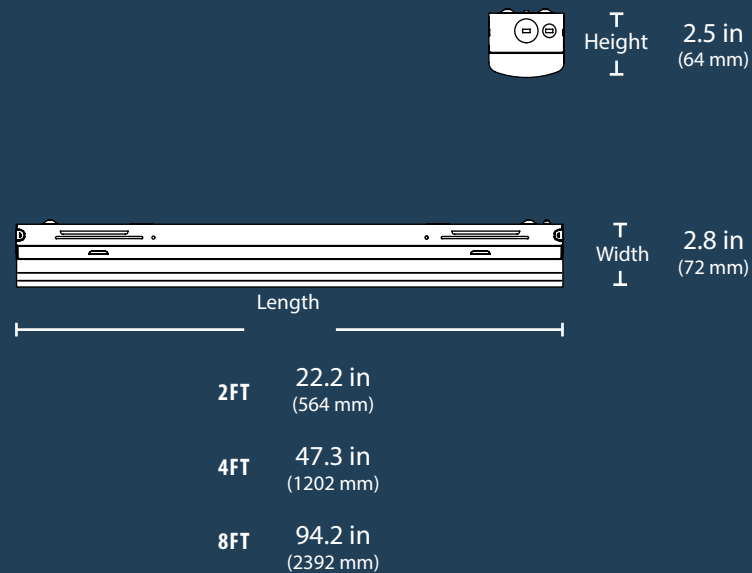


LSL1-NP

Tunable LED Linear Strip

The LSL-NP LED Linear Strip offers adjustable light output and tunable CCT, delivering optimal performance and long life in a slim design ideal for general ambient lighting in retail, warehouse, residential utility, and light commercial or industrial applications. LSL-NP meets DLC requirements for Stairwell and Passageway Luminaires with integrated Bluetooth wireless NLC controls. This versatile fixture is easy to surface mount on both ceilings and walls and can accommodate end-to-end runs. The LSL-NP features a toolless access lens module that is easily removed from the back channel for simple installation. The lens features a semi-circular, milky-white lens that offers a more polished aesthetic while eliminating hot spots, and is an economical, energy-efficient lighting alternative to single-lamp fluorescent strips and some wraparound fixtures. The integrated NLC controls provide energy savings and full Luminaire Level Lighting Control (LLLC) which may qualify for energy saving incentives.

Dimensions



FEATURES

Toolless Access Lens Module

The removable lens module allows for hassle-free maintenance and adjustments.

Integrated Bluetooth Wireless NLC Control

Enables smart energy-saving features & full Luminaire Level Lighting Control (LLC), potentially qualifying for rebates



Select the Perfect Light

The LSL1-NP Linear Strip features Tunable CCT and Wattage for the perfect ambiance via the NICOR NLC App (Android/iOS)

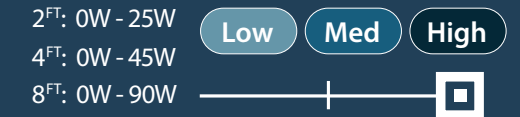
Tunable CCT

Control using the NLC App



Tunable Wattage

Control using the NLC App



GET IT ON
Google Play



Download on the
App Store



Easy Installation & Surface Mounting

Simple to install on both ceilings and walls, with the option for end-to-end runs to cover larger areas seamlessly.



Ordering Information

Example: LSL1445AUT8NP

Series	Version	Length	Wattage Adjustable	Voltage	CCT Tunable	CRI	Controls	Emergency
LSL	1	2 (2 FT)	25A (0W-25W)	U (120-277V)	T (30K-50K) ¹	8 (80CRI)	NP (NLC Sensor)	(Blank)
		4 (4 FT)	45A (0W-45W)					EM4 (4W) ³
		8 (8 FT)	90A (0W-90W)					EM8 (8W) ³
								EM16 (16W) ³

Specifications and dimensions subject to change without notice. 1.) Tunable to any CCT Value between 3000K and 5000K 2.) Special Order - only available on 4' model at MOQ levels 3.) 4W battery for 2ft model only, 8W & 16W for 4ft and 8ft models only.

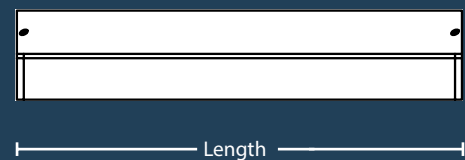
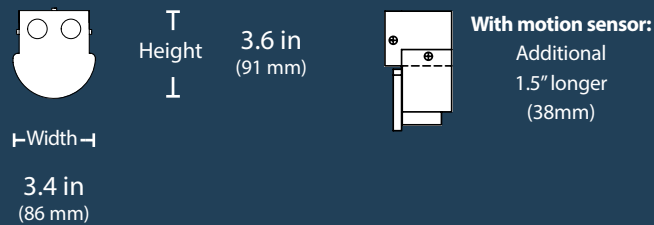


LSC Select

Selectable CCT & Output LED Linear Strip

The LSC Select LED Linear Strip adds on to our tried-and-true linear strip with selectable CCT and light output options, delivering optimal performance and long life in a slim design that's ideal for general ambient lighting in retail, warehouse, residential utility, and light commercial or industrial applications. This versatile fixture is easy to surface mount on both ceilings and walls and can accommodate end-to-end runs. The LSC features a semi-circular, milky-white lens that offers a more polished aesthetic while eliminating hot spots, and is an economical, energy-efficient lighting alternative to single lamp fluorescent strips and some wraparound fixtures. For even greater energy savings, an optional microwave occupancy sensor is also available.

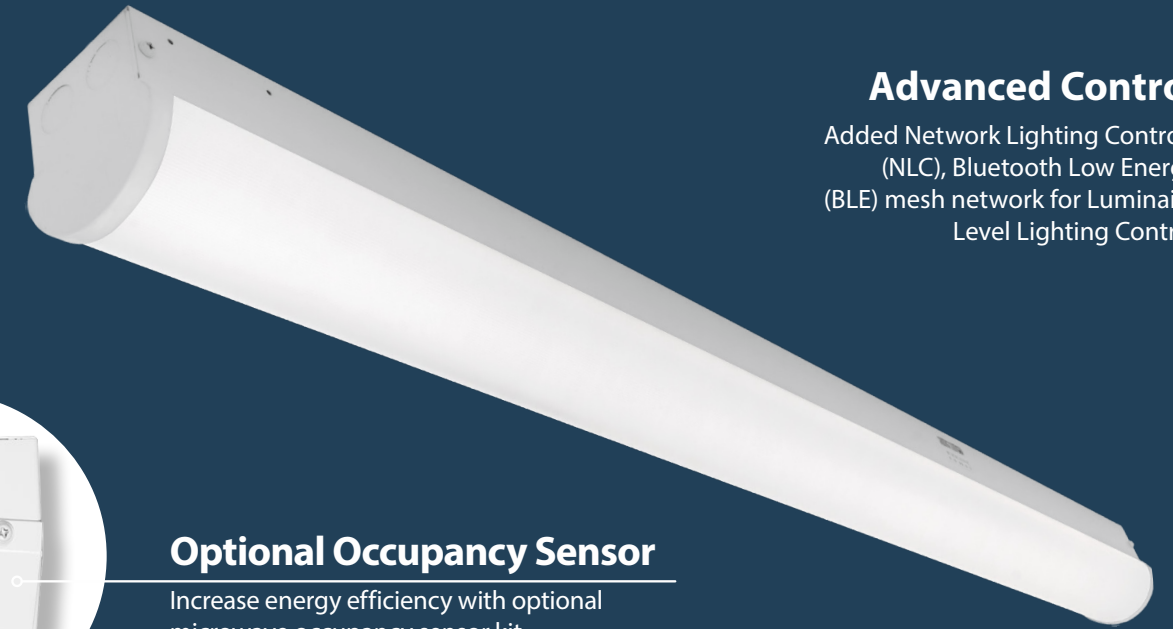
Dimensions



2FT	26 in (660 mm)
4FT	48 in (1219 mm)
8FT	96 in (2438 mm)



FEATURES



Advanced Control
 Added Network Lighting Controls (NLC), Bluetooth Low Energy (BLE) mesh network for Luminaire Level Lighting Control



Optional Occupancy Sensor

Increase energy efficiency with optional microwave occupancy sensor kit



Easy Installation

Safety straps retain LED array allows single-person installation on ceilings or walls.



Cover Plates

Detachable cover plates permit for 4/O J-Box surface installation

Select the Perfect Light

The LSCS features Selectable CCT and Wattage for the perfect ambiance. The selector switch is discretely located on the driver.



1.) Only Available on the 4FT



Ordering Information Example: LSCS14U

Series	Version	Length	Voltage	Controls	Emergency
LSCS	1	2 (2 FT) ²	U (120-277V)	_(Blank)	_(Blank)
		4 (4 FT)		M (Sensor)	EM8
		8 (8 FT)		N2 (NLC Controls)	EM16

Specifications and dimensions subject to change without notice. 2.) 2-foot size is not available with any emergency option.

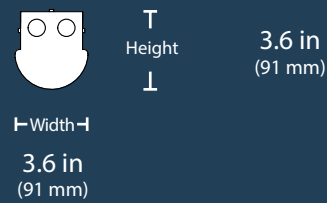


LSC2 Select

Selectable CCT & Output LED Linear Strip

The new LSC2 Select LED Linear Strip adds on to our tried-and-true linear strip with selectable CCT and light output options. This versatile fixture is easy to surface mount on both ceilings and walls and can accommodate continuous runs. The LSC2 features a semicircular, milky-white lens that offers a more polished aesthetic while eliminating hotspots, and is an economical, energy-efficient lighting alternative to single lamp fluorescent strips and some wraparound fixtures. For even greater energy savings, an optional microwave occupancy sensor is also available. The LSC2 delivers optimal performance and long life in a slim design that's ideal for general ambient lighting in retail, warehouse, residential utility, and light commercial or industrial applications.

Dimensions



Length

2FT	24 in (610 mm)
4FT	48 in (1219 mm)
8FT	96 in (2438 mm)



FEATURES



Effortless Mounting

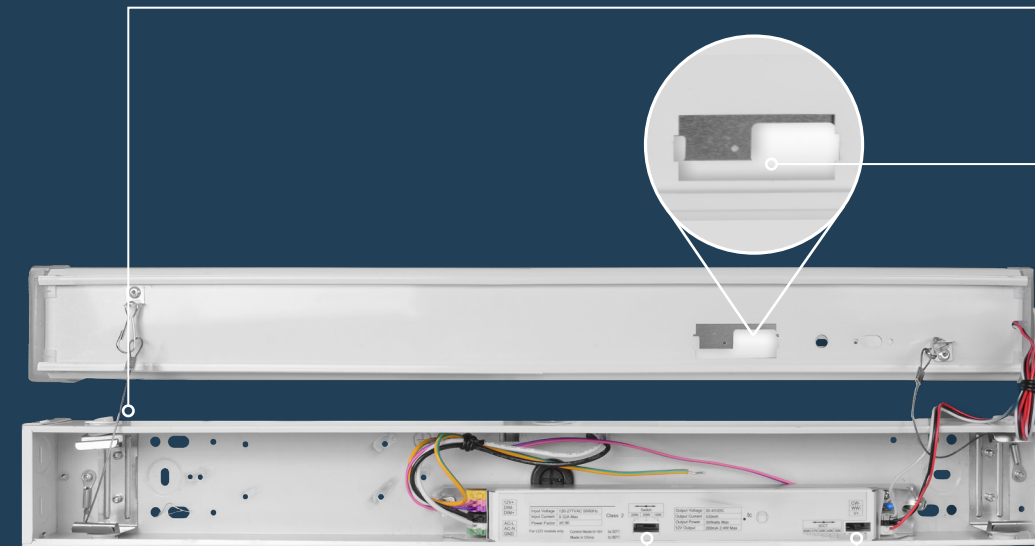
Quick release buttons for light chamber removal

Easy Installation

Safety-strap retained chamber allows single-person installation.

Energy-Efficiency

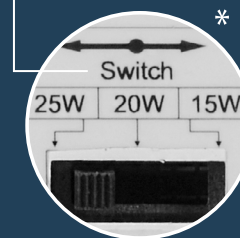
Sensor-ready with 12V output behind lens for additional energy savings



* 2FT fixture

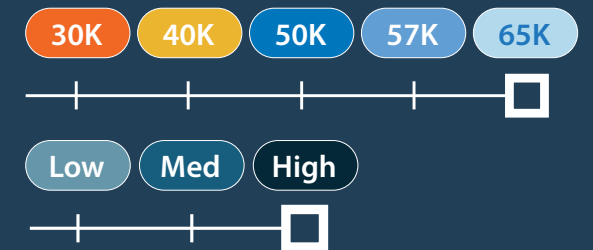
Adjustable CCT and Wattage

Offers selectable color temperatures (30K-65K) and adjustable wattage, adaptable for various lighting needs



Select the Perfect Light

The LSC2 LED Linear Strip features Selectable CCT and Wattage for the perfect ambiance.



Ordering Information							Example: LSC2440SUS8
Series	Version	Size	Voltage	CCT	CRI	Emergency	
LSC	2	225S (2 Foot)	U (120-277V)	S (30/40/50K/57/65K)	8 (80+)	(Blank)	
		440S (4 Foot)				E1 (4W) ¹	
		880S (8 Foot)				E2 (8W) ²	
						E3 (18W) ²	

Specifications and dimensions subject to change without notice. 1.) Only available on 2 foot model 2.) Only available on 4 foot and 8 foot models

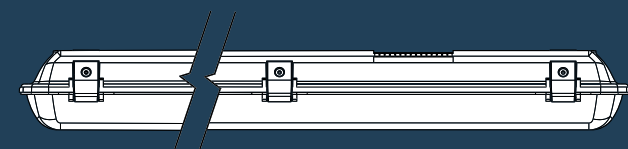
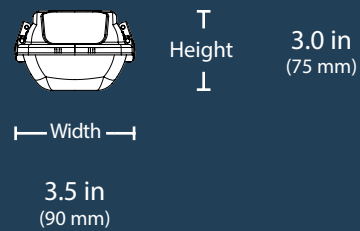


VT3-20

LED Linear Vaportite

The VT3-20 LED Linear Vaportite is designed to give long lasting, energy efficient light in demanding locations. This IP65 rated fixture is dust and water tight and replaces legacy fluorescent strip lights in car wash operations, garages, maintenance facilities, canopies, locker rooms and stairwells.

Dimensions



	Length
2S	23.6 in (600 mm)
4S & 4H	47.2 in (1200 mm)
8H	94.5 in (2400 mm)



FEATURES

Captive Latches

10 Stainless steel latches ensure dust and water tight seal (Ingress Protection 65)

Slimmer Body & Wrapped Lens

Deliver a modern aesthetic.

Frosted Polycarbonate Diffuser

Provides glare-free illumination with 5% uplight for balanced ambient lighting.

- CRI** 80+
- Input** 120-277VAC
- Lifetime** >100,000 hrs
- Dimming** 0-10VDC

Mounting Hook

Spring clips contain a mounting hook for cable suspension and easy installation.

Select the Perfect Light

The VT3-20 features 4000K and 5000K CCT for either a cool white or day light ambience. The selector switches are located on the inside to ensure long-term liability.

Cool White

Daylight

Ordering Information					Example: VT3204SUNV40
Series	Version	Length & Output	Voltage	CCT	Emergency ¹
VT3	20 (Version 2)	2S (2 FT, Standard Output)	UNV (120-277V)	40 (4000K)	_(Blank)
		4S (4 FT, Standard Output)		50 (5000K)	EM8
		4H (8 FT, Standard Output)			EM16
		8H (8 FT, High Output)			

Specifications and dimensions subject to change without notice. 1.) Emergency pack only available on 4' and 8' versions.

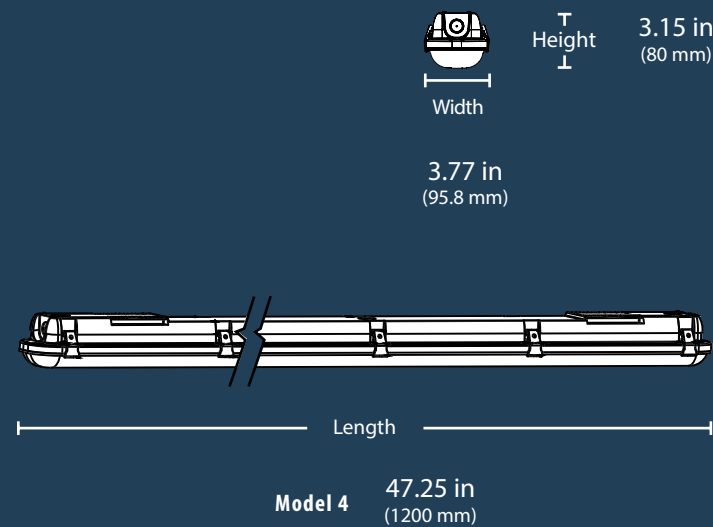


VT4

Selectable LED Linear Vaportite

The VT4 LED Linear Vaportite is designed to give long lasting, energy efficient light in demanding locations. The VT4 is provided with CCT and lumen output selectable options with the choice of 3500K, 4000K, or 5000K CCTs and low, medium, and high lumen output. It is also DLC 5.1 Standard certified, ensuring top of the line quality and performance. This IP66 rated fixture is dust and water tight and replaces legacy fluorescent strip lights in car wash operations, garages, maintenance facilities, canopies, locker rooms and stairwells.

Dimensions



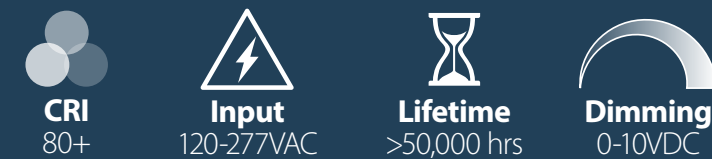
FEATURES



Wrapped Lens
Provides 5% uplight, frosted polycarbonate diffuser.

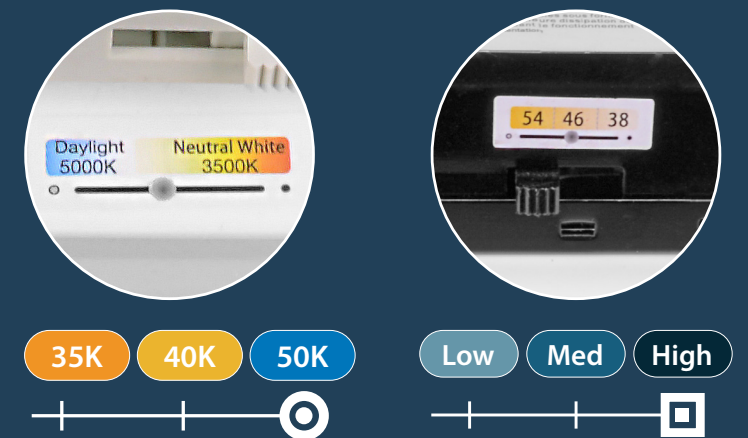
Mounting Hook
Spring clips with a mounting hook for cable suspension.

Sealed & Secured
Fully gasketed polycarbonate housing with captive stainless steel latches. IP65 rated, higher dust and water protection.



Select the Perfect Light

The VT4 features three selectable CCTs (35K, 40K, or 50K) and three selectable Wattage for the perfect color temperature for your environment. The selector switches are located on the inside to ensure long-term liability.



Ordering Information						Example: VT4454SUNVS8
Series	Version	Length & Selectable Output	Voltage	Selectable CCT	Sensor	Emergency
VT	4 (Version 4)	454S (4 feet, 34/38/45W)	UNV (120-277VAC)	S8 (35K/40K/50K)	Blank (none)	Blank (none)
					M (Microwave)	E2 (8W)
						E3 (18W)

Specifications and dimensions subject to change without notice.

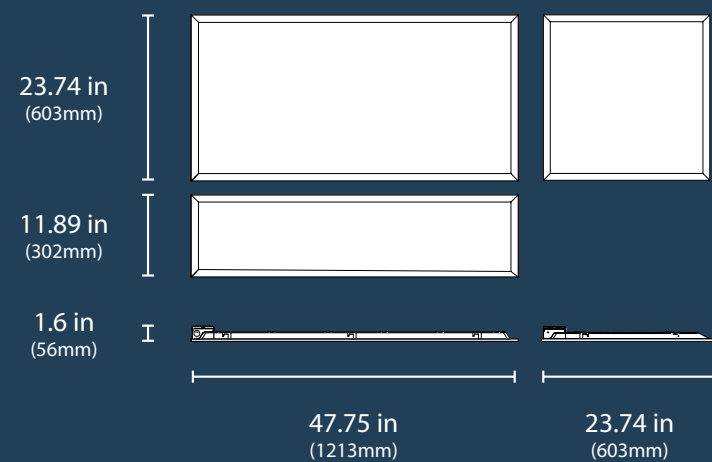


TGLS3

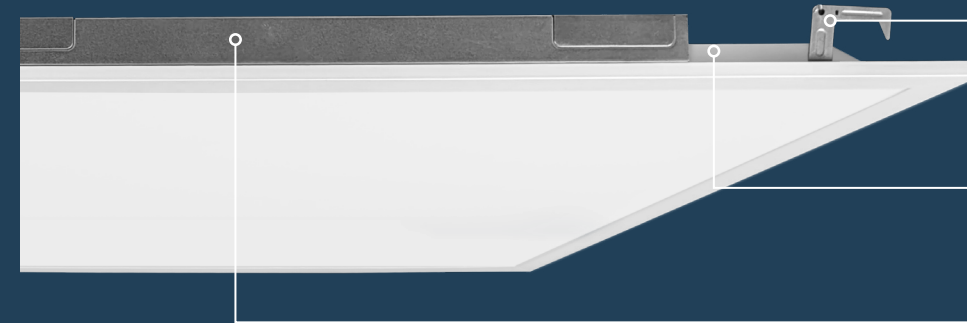
Selectable LED Backlit Troffer

The TGLS3 is a contractor grade Troffer that will exceed quality and performance for most commercial spaces. The TGLS3 LED Troffer features a pre-mounted driver and a maintenance-free, fully sealed chamber with seamless aluminum frame to keep bugs and dust out. The fixture utilizes a precision-engineered, textured diffuser to deliver maximum lumen output and optimal uniformity without revealing hot spots or shadowing. Provided with CCT and lumen output selectable options with the choice of 3500K, 4000K, or 5000K CCTs and low, medium, and high lumen output. It is also DLC 5.1 Standard certified, ensuring top of the line quality and performance. The TGLS3 is the perfect lighting solution for offices, hospitals, and other commercial spaces.

Dimensions



FEATURES



Integral Grid Tie Clips

Attached grid clip with wire-tie holes provided for seismic requirements

Safe Handling

Smooth formed sides for safe handling

Larger Junction Box

Increased junction box size with seven knockouts for easier wiring

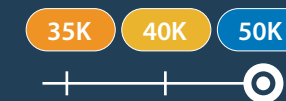


Light Uniformity

No visible diodes, hot-spots, or shadows providing high uniformity and reduced glare

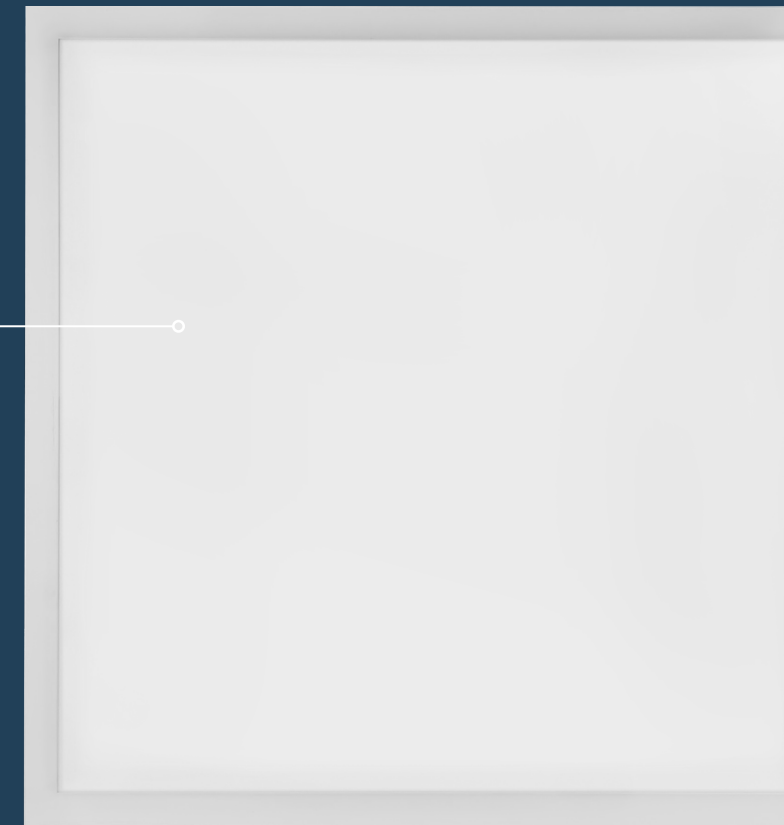
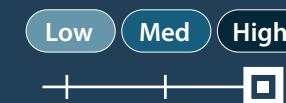
Selectable CCT

External switch allows easy CCT Selection: 3500K, 4000K, or 5000K



Selectable Wattage

External switch allows easy wattage selection:
2'x2': 30W-40W
2'x4': 30W-50W



Ordering Information

Example: TGLS322U

Series	Version	Size	Voltage	Controls	Emergency (Optional)
TGLS	3	14 (1' x 4')	U (120-277V)	Blank (None)	Blank (None)
		22 (2' x 2')		N1 (NLC Controls)	E1 (EMB045)
		24 (2' x 4')			E2 (EMB080)

Specifications and dimensions subject to change without notice.

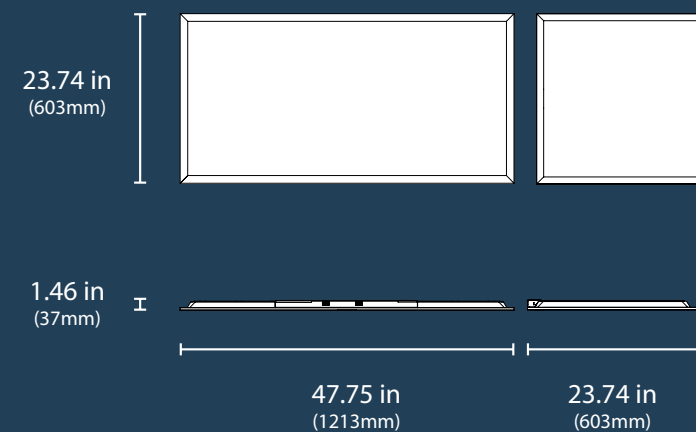


TGL4

Selectable LED Backlit Troffer

The TGL4 is a high-performance, contractor-grade LED troffer designed to meet the demands of commercial environments. Featuring a large, highly accessible junction box and a sealed, maintenance-free chamber with a seamless aluminum frame, it effectively keeps out dust and insects. The fixture is equipped with a precision-engineered, textured diffuser that provides maximum lumen output and uniform light distribution, eliminating hot spots or shadowing. Available with selectable CCT and lumen output options, users can choose between 3500K, 4000K, or 5000K CCTs, as well as low, medium, or high lumen outputs. Additionally, it holds the DLC 5.1 Standard certification, ensuring exceptional quality and performance. Ideal for offices, hospitals, and a variety of other commercial spaces, the TGL4 offers a reliable and efficient lighting solution.

Dimensions



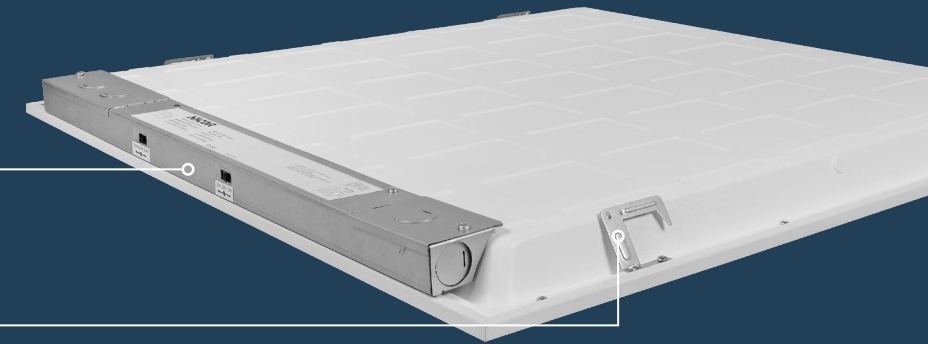
FEATURES

Junction Box Accessibility

Improved, large, and highly accessible junction box with seven knockouts.

Integral Grid Tie Clips

Attached grid clip with wire-tie holes provided for seismic requirements



CRI
80+



Lumens
2467-6446



Lifetime
>54,000 hrs



Beam Angle
115.9°-120.5°

Safe Handling

Smooth formed sides for safe handling and installation

Sealed Light Chamber

Prevents ingress of dust or insects

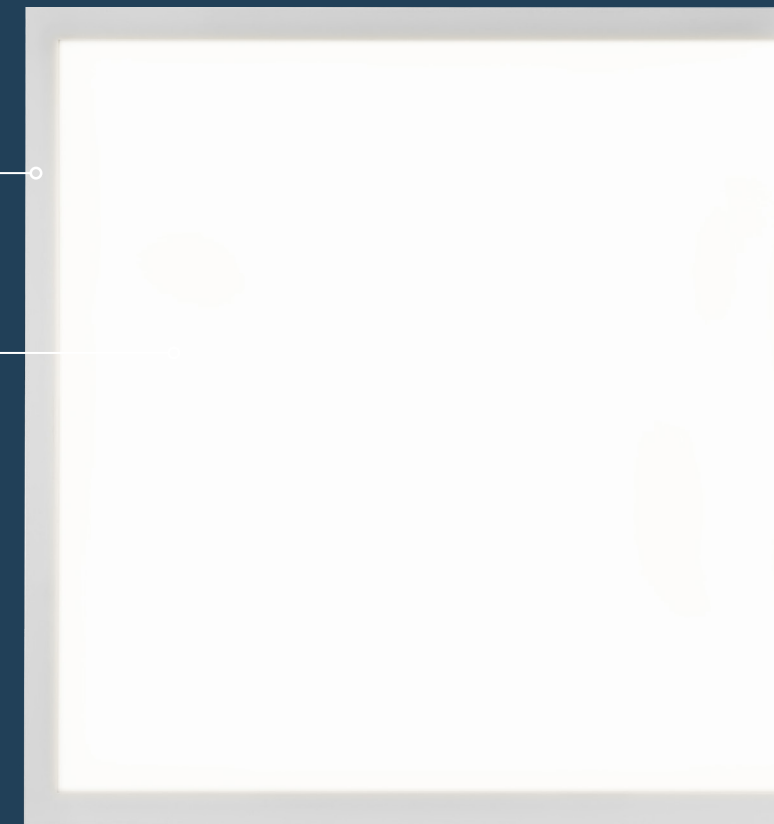
Selectable CCT

External switch allows easy CCT Selection: 3500K, 4000K, or 5000K



Selectable Wattage

External switch allows easy wattage selection: 20W, 30W and 40W for 2'x2', 30W, 40W and 50W for 2'x4'



Ordering Information

Example: TGL42240SUS8

Series	Version	Size	Wattage	Voltage	CCT	CRI	EM (Optional)
TGL	4	22 (2 x 2)	40S (20/30/40)	U (120-277V)	S (35/40/50)	8 (80+)	Blank (None)
		24 (2 x 4)	50S (30/40/50)				E1 (EMB045)
							E2 (EMB080)

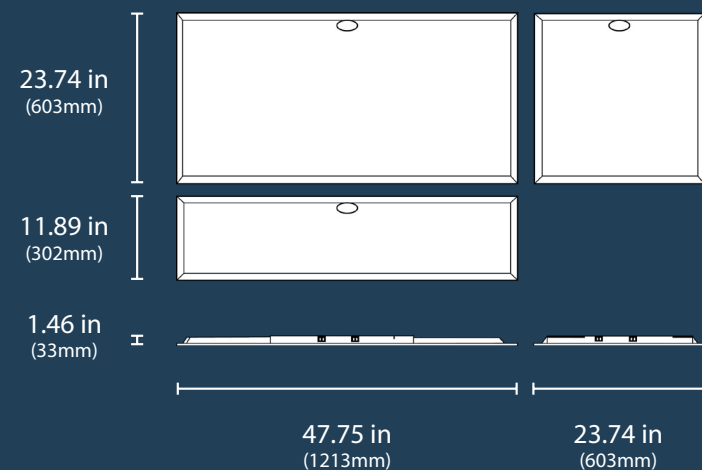


TGL4S

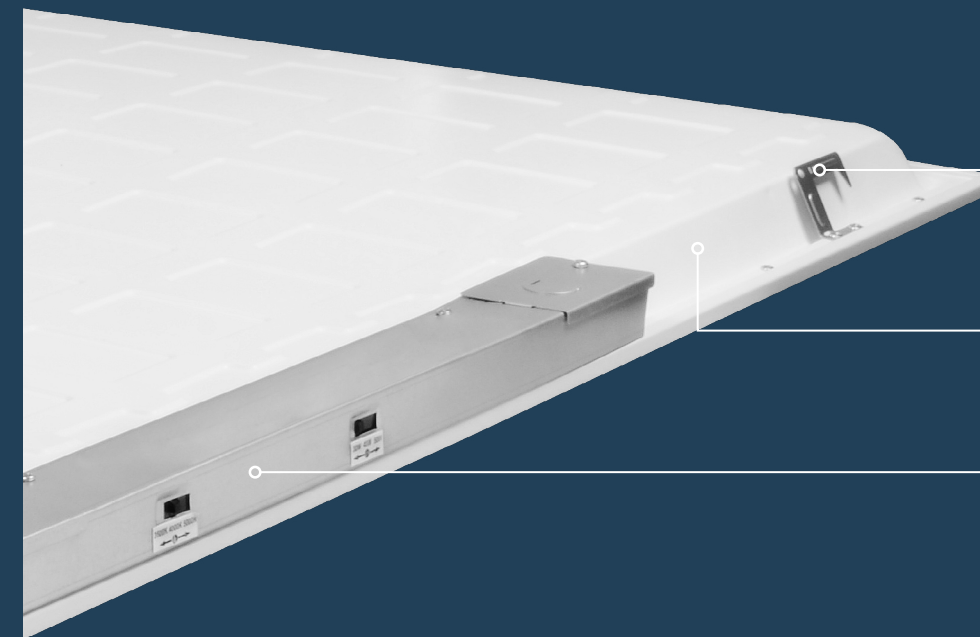
Selectable LED Backlit Troffer

The TGL4S is a high-performance, contractor-grade LED troffer designed to meet the demands of commercial environments. It features an Integrated sensor-ready socket, a large, highly accessible junction box and a sealed, maintenance-free chamber with a seamless aluminum frame, it effectively keeps out dust and insects. The fixture is equipped with a precision-engineered, textured diffuser that provides maximum lumen output and uniform light distribution, eliminating hot spots or shadowing. Available with selectable CCT and lumen output options, users can choose between 3500K, 4000K, or 5000K CCTs, as well as low, medium, or high lumen outputs. Additionally, it holds the DLC 5.1 Premium certification, ensuring exceptional quality and performance. Ideal for offices, hospitals, and a variety of other commercial spaces, the TGL4S offers a reliable and efficient lighting solution.

Dimensions



FEATURES



Integral Grid Tie Clips

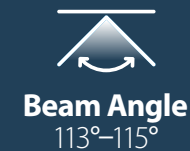
Attached grid clip with wire-tie holes provided for seismic requirements

Safe Handling

Smooth formed sides for safe handling

Larger Junction Box

Increased junction box size with seven knockouts for easier wiring



Sealed Light Chamber

Prevents ingress of dust or insects

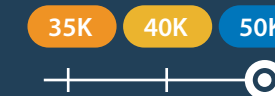
Sensor-Ready

Sensor-ready socket allows for a seamless integration with occupancy sensors



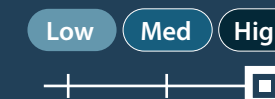
Selectable CCT

External switch allows easy CCT Selection: 3500K, 4000K, or 5000K



Selectable Wattage

External switch allows easy wattage selection: 20W, 30W and 40W for 1'x4' and 2'x2', 30W, 40W and 50W for 2'x4'



Ordering Information

Example: TGL42240SUS8

Series	Version	Size	Wattage	Voltage	CCT	CRI	Sensor Ready	EM (Optional)
TGL	4	14 (1 x 2)	30S (30/25/20)	U (120-277V)	S (35/40/50)	8 (80+)	S (Sensor ready)	Blank (none)
		22 (2 x 2)	30S (30/25/20)					E1 (EMB045)
		24 (2 x 4)	30S (50/40/30)					E2 (EMB080)

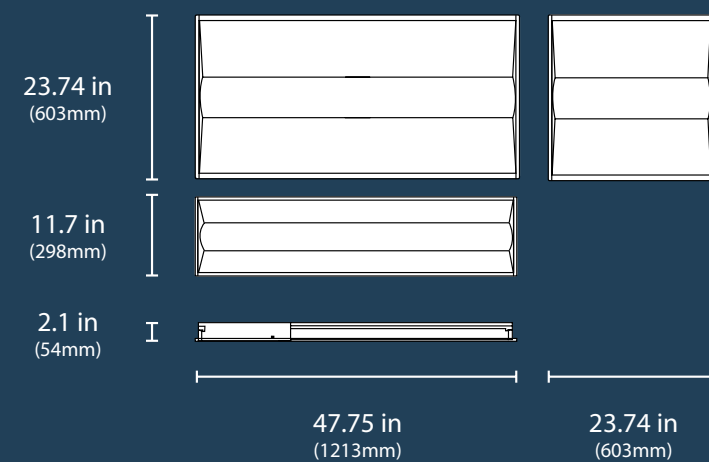


TAC2 Select

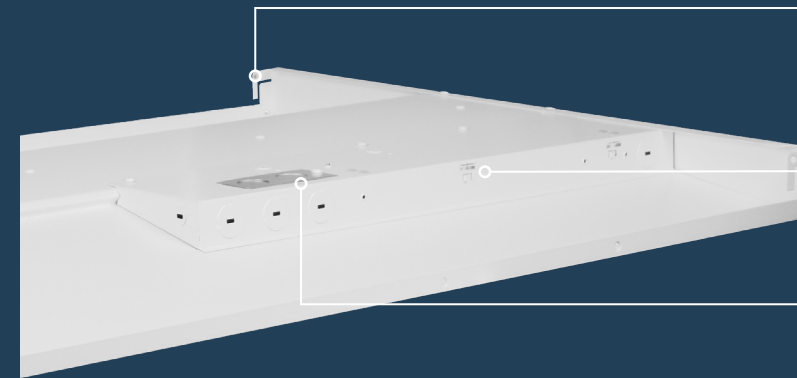
Selectable Architectural LED Troffer

The TAC Select Architectural LED Troffer is an economical lighting solution for commercial, educational, medical, and retail applications where general-purpose ambient lighting is required. With its contemporary center lens design, TACS provides a soft natural glow and even illumination that minimizes glare. The CCT Selectable design allows for easy adjustment to 3500K, 4000K, or 5000K and selectable wattage allows the ability to tailor the brightness to the space. Available in 1x4, 2x2, or 2x4 configurations, the TACS is an easy-to-install upgrade from linear fluorescent lighting to a long-lasting, energy-efficient

Dimensions



FEATURES



Mounting Holes

Attached grid clip with wire-tie holes provided for seismic wire

Safe Handling

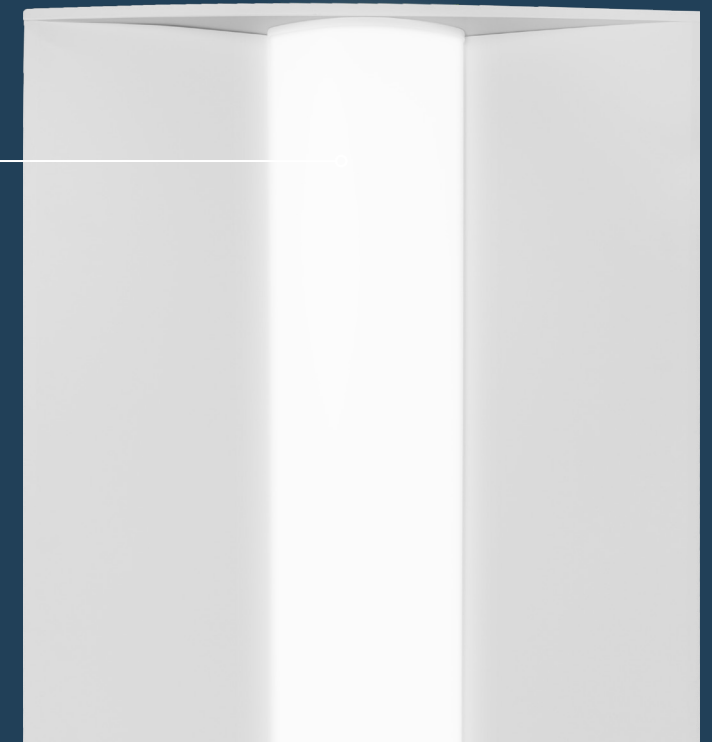
Smooth formed sides for safe handling

Fast Installation

Features an integral driver for easy installation

Light Uniformity

No visible diodes, hot-spots, or shadows providing high uniformity and reduced glare



35K 40K 50K



Selectable CCT

External switch allows easy CCT Selection: 3500K, 4000K, or 5000K

Low Med High



Selectable Wattage

External switch allows easy wattage selection:

- 1'x4': 20W-30W
- 2'x2': 20W-30W
- 2'x4': 34W-42W



Ordering Information

Example: TACS224U

Series	Version	Size	Voltage	CCT	Emergency(Optional)
TAC	2	14 (1' x 4')	U (120-277V)	S (Selectable: 35K/4K/5K)	(Blank)
		22 (2' x 2')			E1 (EMB045)
		24 (2' x 4')			E2 (EMB080)

Specifications and dimensions subject to change without notice.

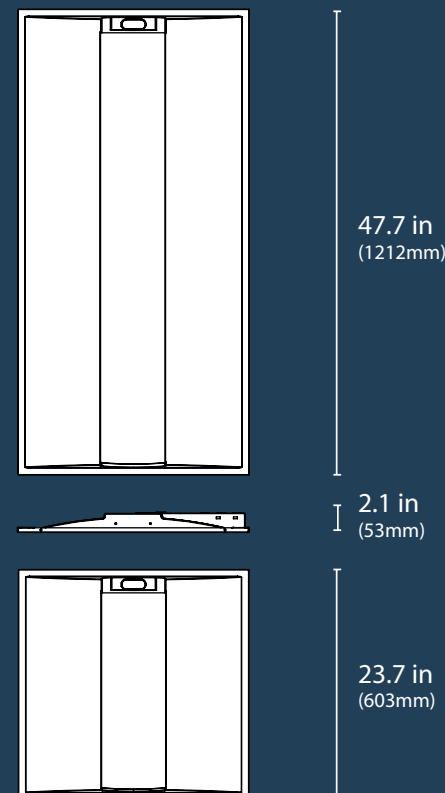


TAC3 Select

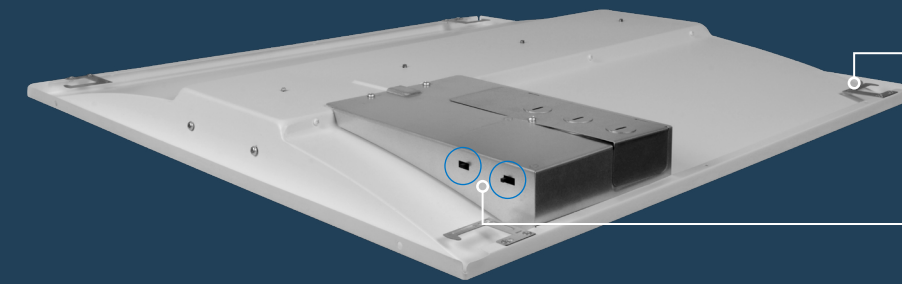
Sensor-Ready Architectural LED Troffer

The Sensor-Ready version of the TAC Select Troffer takes energy efficiency and smart functionality to the next level. Equipped with built-in sensor compatibility, this model can seamlessly integrate with occupancy sensors and daylight harvesting systems, optimizing energy use and enhancing the overall lighting experience. The CCT Selectable design allows for easy adjustment to 3500K, 4000K, or 5000K and selectable wattage allows the ability to tailor the brightness to the space. Available in 2x2, or 2x4 configurations, the Sensor-Ready TAC Select is a forward-thinking choice for modern buildings.

Dimensions



FEATURES



Versatile & Easy Installation

Quick single-person install with multiple mounting options, seismic support, and emergency backup available.

Convenient Adjustability

Easily access CCT & wattage selector switches via the junction box for quick customization.

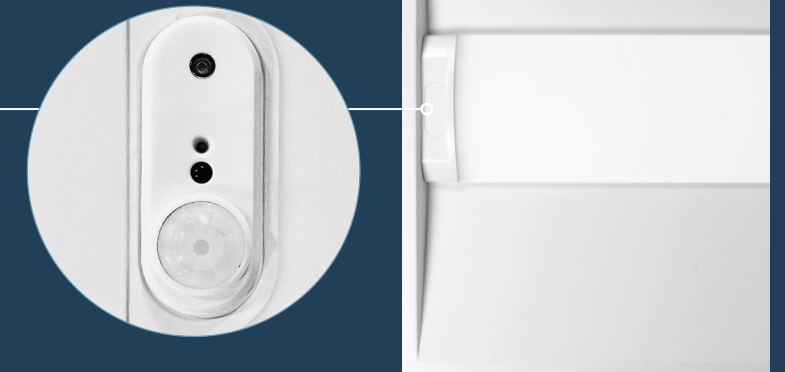
- 
CRI
 >80
- 
Lumens
 1904-6808
- 
Lifetime
 >60,000 hrs
- 
Beam Angle
 114.2°-120.7°

Built-in Smart Sensor Compatibility

Sensor-ready socket allows for a seamless integration with occupancy sensors



Works seamlessly with NICOR's NLC and the SNAPINSENSORPIR1WH for easy automation & efficiency.



Select the Perfect Light

The TAC Select features selectable CCT and Wattage options that allow for a more customized lighting for your specific needs.

Ordering Information								Example: TAC324SUS8S
Series	Version	Size	Wattage Selectable	Voltage	CCT	CRI	Sensor	Emergency
TAC	3	22 (2' x 2')	25S (15/20/25W) ¹	U (120-277V)	S (Select: 35/40/50K)	8 (>80)	S (Sensor Socket)	_Blank
		24 (2' x 4')	50S (30/40/50W) ²					E1 (EMB045)
								E2 (EMB080)

Specifications and dimensions subject to change without notice. Please refer to the website for the most up-to-date information. 1.) 2x2 model only 2.) ** 2x4 model only

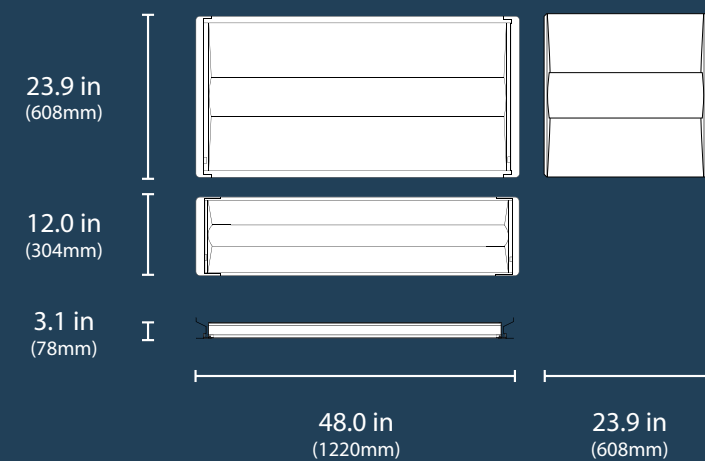


TARS2

Architectural LED Troffer Retrofit Kit

The TARSv2 Architectural LED Troffer Retrofit provides an economical, easy-to-install upgrade from linear fluorescent lighting to a long-lasting and energy-efficient LED solution. The contemporary center lens design delivers a soft natural glow with even illumination and minimized glare, making it an attractive general-purpose ambient lighting solution. The TARSv2 also features a premounted driver with a high-efficiency, maintenance-free LED chamber. Whether in a school, hospital, airport, office or convenience store, NICOR LED troffers bring a stylish and economical lighting solution to all commercial, educational, medical, and retail applications. The CCT and Wattage Selectable design allows for easy adjustment to 3500K/4000K/5000K and a choice of high, medium, or standard light output.

Dimensions



FEATURES

Fast & Easy Installation

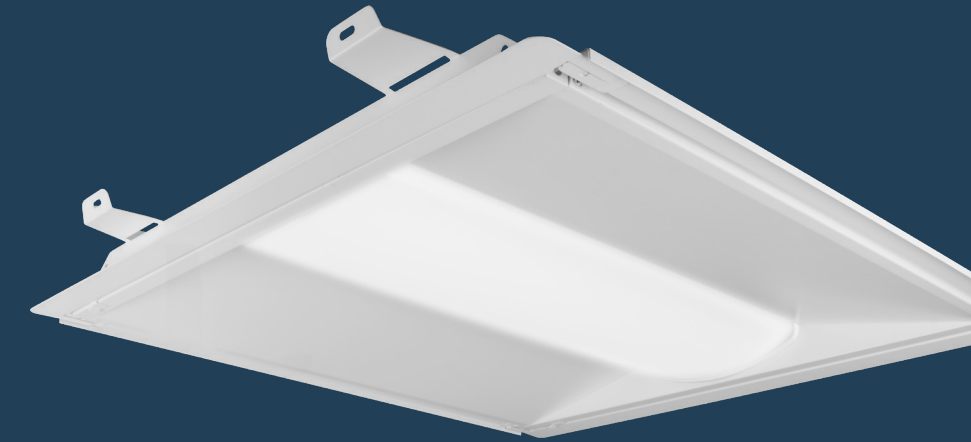
Single-person retrofit with a seamless four-rail design for quick LED upgrades.

Efficient Design

Premounted driver and maintenance-free LED chamber for reliable performance.

Smart Controls Available

NLC-compatible with BLE mesh for dimming, occupancy sensing, and daylight harvesting.



Superior Light Quality

Smooth, even illumination with no visible diodes, hot spots, or shadows for soft and comfortable ambient lighting.

Selectable CCT

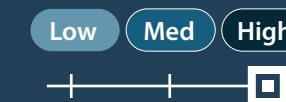
External switch on the back allows easy CCT Selection: 3500K, 4000K, or 5000K



Selectable Wattage

External switch on the back allows easy wattage selection:

- 1'x4': 20W-31W
- 2'x2': 20W-31W
- 2'x4': 34W-46W



Ordering Information

Example: TARS224U

Series	Version	CCTs	Size	Voltage	Controls	Emergency (Optional)
TAR	2	S (Selectable: 35K/40K/50K)	14 (1' x 4')	U (120-277V)	Blank (none)	E1 (EMB045)
			22 (2 x 2')		NI (NLC Controls)	E2 (EMB080)
			24 (2' x 4')			

Specifications and dimensions subject to change without notice. 1.) Only available by special order.

Codes, Compliance, & Controls

ASHRAE 90.1 and IECC Codes

In the United States, energy codes are typically based on either ASHRAE 90.1 and the Illuminating Engineering Society (IES) or The International Energy Conservation Code (IECC). These are typical minimum requirements for an energy-efficient design of most buildings. Warehouses were added to these requirements in 2015. The goal is reduced energy consumption by 3.5-quadrillion BTU per year and reduced CO2 emissions by 3% by 2030. The code states that at least 50% of all fixtures must be automatically shut off when unoccupied.

What's Required?

ASHRAE/IES 90.1 2016 requires that warehouse storage lighting be automatically reduced when not in use. Specifically, lighting power must be reduced by at least 50% within 20 minutes of vacancy. IECC 2018 requires that occupancy sensors be used throughout warehouses to conserve energy in open areas and aisles. If the warehouse has windowed areas or skylights, the controls must also include daylighting requirements.

NSF Splash Zone

NSF Zone 2, or Splash Zone rating evaluates lighting for areas where direct contact with food products during normal operations would not be expected. However, equipment in this area may be situated in such a way that during processing or cleaning (or both), liquids may splash, spill or otherwise soil the surfaces of the fixture. Areas include wet or damp process areas, high-pressure purging and/or decontamination used in the process, and areas using hose washdown.

TITLE 24

NICOR luminaires meet Title 24, California's non-residential lighting control requirements when used with additional controls. The controls include occupancy sensing, daylighting, luminaire dimming, and lighting power density.

The Solution

Optimized to meet energy codes for occupancy sensing and daylight harvesting, NICOR has several sensor controls to meet your needs and save energy.

The NICOR passive infrared dimming sensor is easy to set with a remote control for your convenience.

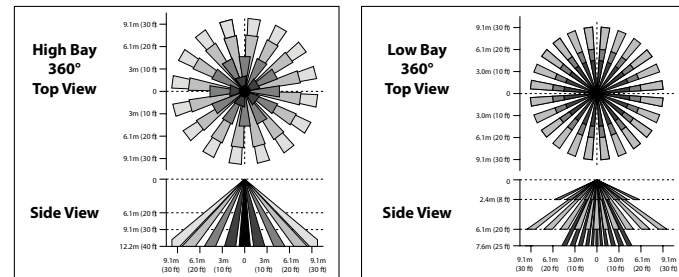
Wireless Options

NICOR's Bluetooth Low Energy (BLE) wireless node is available on a variety of luminaires. The technology provides a mesh network where the intelligence of NICOR network lighting controls (NLC) is replicated in each node. From small to large networks, this option is controlled by a simple app. Contact factory for further information and check compatibility with your desired fixture.

Microwave Motion Sensor

See the individual spec sheet for further information.

- Field installed 12VDC sensor
- Microwave motion detector with built-in daylight sensor
- Remote control programmable
- Highly configurable:
 - Detection area
 - Hold time
 - Dimming level
 - Standby period
 - Standby dimming
 - Daylight harvesting threshold
- Max mounting height: 50ft (15m)



Passive Infrared (PIR) Motion Sensor

See the individual spec sheet for further information.

- Field installed 12VDC sensor
- Microwave motion detector with built-in daylight sensor
- Remote control programmable
- Highly configurable:
 - Detection area
 - Hold time
 - Dimming level
 - Standby period
 - Standby dimming
 - Daylight harvesting threshold
- Max mounting height: 40ft (12m)



Take Control of Your Lighting with NICOR's All-In-One System.

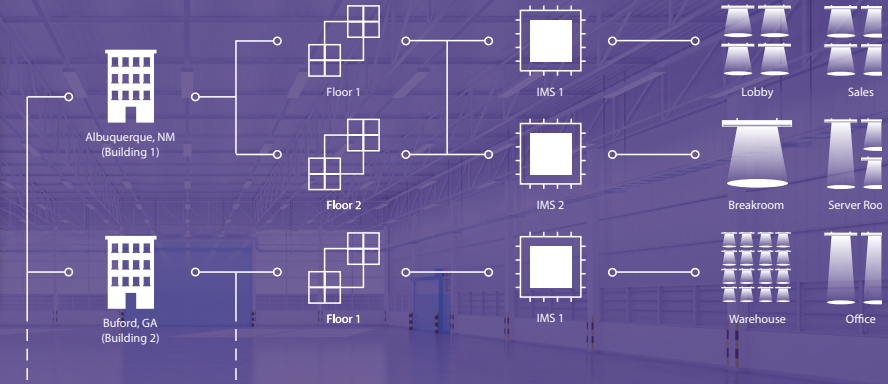
NICOR's Illumination Management System (IMS) introduces simple installation with an easy-to-use user interface. The Digital Addressable Lighting Interface (DALI) enabled system provides individual fixture control to multi-site empowerment with our Master Control Unit (MCU). Developed with energy management in mind, this system is perfect for industrial facilities, data centers, and large commercial buildings.



IMS Lighting Controls Cabinet

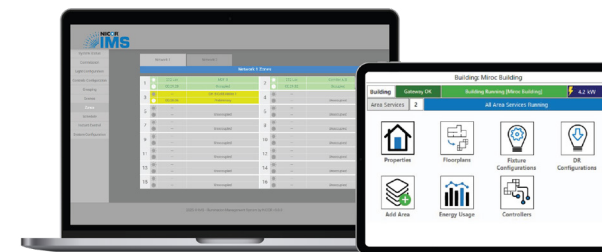


Each IMS can control up to 128 fixtures.



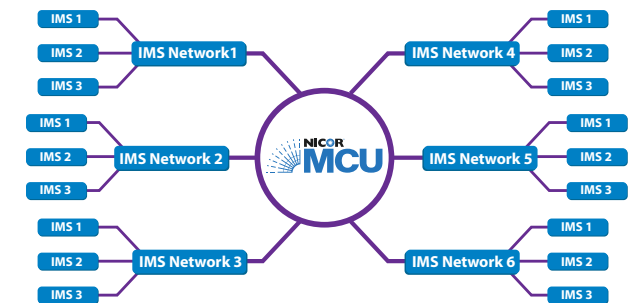
Scale Control with the MCU

The NICOR Master Control Unit (MCU) software offers complete control of every IMS in a network. From individual building control to multiple facilities around the globe, the NICOR MCU provides the ability to manage them all from a central location.



IMS/MCU Networking Capability

- Interactive Floor Plans
- Remote Access Control
- Energy Consumption Information
- Fixture Health Reports



Suitable for Industrial Environments

Your project may demand a more rugged solution and the IMS can handle it. Built with a 14-gauge steel NEMA-1 enclosure, it has the proper protection to keep it safe in warehouses, data centers, mills, and more. The polycarbonate high-voltage cover eliminates the need to perform Lock-Out, Tag-Out procedures for cabinet commissioning.

High Temperature Tested + Rated

The IMS cabinet design prevents overheating and loss of lighting in ambient temperature environments up to 40°C (104°F).

Security

Lighting controls shouldn't leave you vulnerable. The IMS works with a fully closed-circuit system to remove the threat of digital intruders.



Simple Commissioning + User Interface

Easily control every aspect of your facility's lighting from zoning, scene control, and commissioning of new fixtures and control devices. Once installed, there is no need to call an electrician to install another fixture or commission the system. Everything can be efficiently managed from the easy-to-use User Interface.

Flexible Programming

Zones

Control aisles, rooms, or other groups of fixtures and control devices systematically through the IMS zoning system. Zones provide an effective way to manage luminaires at scale. Easily fine tune the lighting operation and behavior in any space.

Scenes

Scenes allow you to trigger programmed sets of fixtures to a preset lighting design. When commissioning a scene, each fixture can be set to a unique light level while also being scheduled to reach that level at a designated time.

Helpful Hints

- A high bay luminaire is typically mounted at 20' or higher and low bay is 20' or lower.
- Most warehouse layouts average about 35 foot candles at the work plane level.
- Arrange your layout to overlap the end of an aisle to avoid shadows.
- Most new construction buildings have 25'-40' ceilings.
- Recommended reflectance levels are 80/50/20.
- When warehouses include racking system, it is best to specify the HML or HBG high bay with the aisle optics option for these applications.



Warehouse Footcandle Minimums

Task	Horizontal Target (E_h)	Vertical Target (E_v)	Uniformity Target
Loading	10-20	3-6	3:1
Picking/Classifying	10-20	5-10	3:1
Receiving/Staging	30-60	10-20	2:1
Packing/Labeling	30-60	15-30	3:1
Inactive Storage	5-10	2-4	5:1
Inspection	100-200	100-200	3:1
Active Storage (large labels/items)	10-20	5-10	5:1
Active Storage (small labels/items)	30-60	15-30	3:1

Above are the lighting recommendations from the Illuminating Engineering Society. These are minimum levels for each type of task completed in manufacturing facilities. Good lighting is more important than ever.

The effects of great lighting help increase workplace productivity

Eye strain, headaches, reduced productivity, and poor concentration are effects of poor lighting conditions, which can decrease productivity. Additionally, the proper color temperature and CRI can increase productivity. An increase as little as 1% in productivity beats any kind of energy savings from antiquated lighting.



Improve Productivity



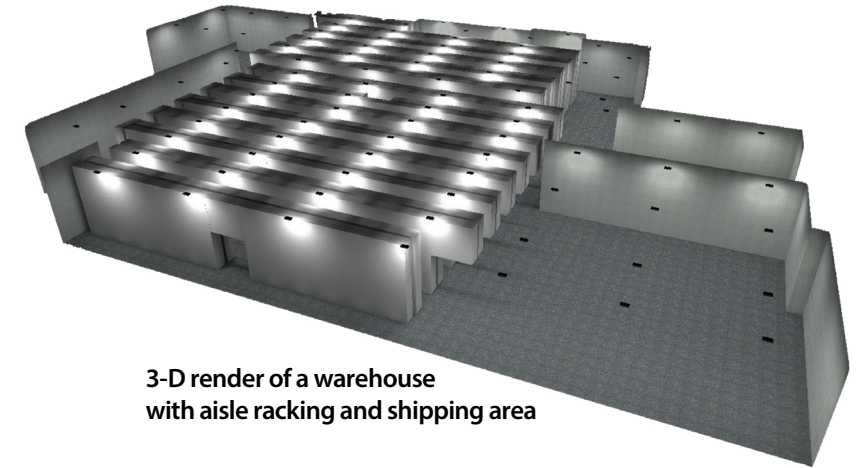
Complex Floor Plan?

If your project involves a complex floor plan or requires a more detailed layout analysis, our team of application engineers can create a detailed 3-D model of your space.

The Making of a Layout

Our application engineers will help you satisfy your customer's requirements; from specific footcandle levels to working space requirements and more. Your customized report provides an in-depth look at how NICOR's lighting solutions are the perfect fit for any project.

- Exporting RCP as CAD files for 3-D modeling
- Revealing hard-to-detect effects of lighting
- Showing uniformity ratios & illuminance levels in specific areas
- Turnaround in 1-2 days



3-D render of a warehouse with aisle racking and shipping area

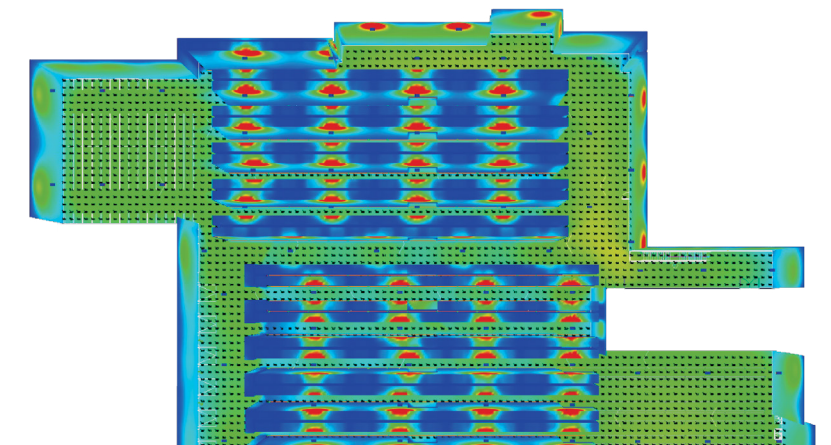


Email or Call Today

layouts@nicorlighting.com
505-343-5390

Simple Layout?

Visit our website:
<https://nicorlighting.com/lighting-layouts/>



Heat Map



Warehouse Locations

Albuquerque, NM
Buford, GA
Roseville, CA

T 800.821.6283

F 800.892.8393

www.nicorlighting.com

2200 Midtown Pl. NE
Albuquerque, NM 87107 USA



LIT-WAREHOUSE-10PK
20250314

© 2025 NICOR® • ALL RIGHTS RESERVED

NICOR®