

NICOR[®]

OUTDOOR

Wall Packs | Canopies | Area Lights | Garage Lights | Flood Lights | Cylinders | Sconces | Bollards | Pole Tops

NICOR[®] OUTDOOR

Enhance your exterior environment with fixtures designed to meet your unique lighting needs, from pathways and parking lots to perimeters and entryways.

Our practical, high-performance outdoor lighting solutions deliver impressive lumen output, rugged durability, and extreme efficiency so you can illuminate any space just the way you want to.

Let your night shine bright.





FEATURE LISTING AND RATINGS

NICOR designs unique features into our lighting fixtures that make them more efficient, easier to install, and superior to similar products so they out-perform our competition.

The following guide defines these features to help you choose the right fixture for your application.



DLC

The DesignLights Consortium® promotes quality, performance, and energy-efficient commercial sector lighting solutions through collaboration among its federal, regional, state, utility, and energy efficiency program members, luminaire manufacturers, lighting designers, and other industry stakeholders throughout the U.S. and Canada. More information can be found at www.dlc.com.



UL LISTED

UL is a world leader in product safety testing and certification. For more than 100 years, manufacturers have had their merchandise evaluated and tested for safety risks by an independent, third-party safety certification organization. Last year alone, approximately 14 billion products with the UL Mark entered the global marketplace. More information can be found at www.ul.com.



ETL INTERTEK LISTED

The ETL Listed mark indicates that NICOR® products have been tested by Intertek and were found in compliance with accepted national standards. More information can be found at www.intertek.com.



IP65

These products are rated to be “Dust-tight” and are protected against heavy water spray.



WET LOCATION

These products can be used in wet locations, both indoor and outdoor. A wet location is an interior or exterior location in which water or other liquids may drip, splash, or flow on or against the electrical components of a lighting fixture or ceiling fan. Outdoor Wet Locations include open-air decks and patios, uncovered porches, outdoor dining areas, exterior walls, gazebos, pergolas, and walkways. Indoor Wet Locations include shower enclosures.



5 YEAR WARRANTY

NICOR Inc. warrants that all NICOR LED branded Solid State Lighting products made by NICOR to be free from defects in material and workmanship under normal consumer usage for a period of 5 years from date of purchase. For complete warranty information please visit nicorlighting.com.

AQUILA - OAL

LED Area Light

The Aquila LED Area Light delivers high efficiency with maximum energy savings and advanced controls. Its low-profile die-cast aluminum housing has a modern, single piece design that provides low wind resistance. Suitable in parking lots, roadways, recreational or public venues, walkways, auto dealerships, campuses, and other commercial spaces. Quick to install, the Aquila is a versatile fixture with easily interchangeable precision lenses and four different wattages. Five mounting options and various pole selections are also available.

- High-impact, polycarbonate precision lenses in Type III and Type V distributions
- 3000K, 4000K, and 5000K CCTs
- Available in 60, 100, 150 and 200 watt
- Photocell and motion sensor options
- 0-10 VDC dimming
- Fine-textured bronze or white finish
- 120-277VAC



3000K
4000K
5000K



8143Lm
8344Lm
8545Lm



60W



138
142
145

3000K
4000K
5000K

12529Lm
12836Lm
13143Lm

100W

123
126
129

3000K
4000K
5000K

17379Lm
17622Lm
17869Lm

150W

117
119
120

3000K
4000K
5000K

25187Lm
25833Lm
26480Lm

200W

128
131
134



AQUILA - OAL

Arm & Pole Options



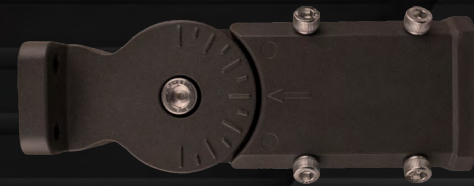
Adjustable Arm

- For use on square and round poles with adapter
- Retained wiring area in side access
- Adjustable from 90° to -90°
- Single-bolt tension and locking teeth secure positioning



Adjustable Wall Arm

- For wall mounting only
- Retained wiring area in side access
- Adjustable from 90° to -90°
- Single-bolt tension and locking teeth secure positioning
- Decorative cover plate for mounting screws



Slipfitter

- For use on square and round poles
- Adjustable from 90° to -90°
- Tenon mount (2.375" x 3")
- Single-bolt tension and locking teeth secure positioning



Straight Arm

- Side access wiring area
- For use on square and round poles with adapter



Trunnion

- For wall mounting only
- Adjustable in 45° increments from 90° to -90°
- Locking pin secures positioning



Pole

- 4" square and round poles
- 15- and 25-foot lengths
- Custom lengths available by request
- Mounting holes pre-drilled to customer specifications



POLLUS - OTL

LED Pole Top

Pollus provides even illumination with advanced LED technology, making it the ideal pole top lighting solution for exterior pathways, courtyards, and parking lots. Pollus features a polycarbonate precision lens in a Type V "very short" distribution and is easily mounted to a 3" diameter pole using a 2 3/8" tenon adapter. The bronze LED pole top is available in 40W and 80W with a 5000K color temperature and has photocell and motion sensor options to suit your environment. The fixture is also dimmable from 0-10VDC and includes 10kA surge protection.

- Thermally-protected, high-efficiency driver
- High-impact, polycarbonate precision lenses in Type II, Type III, Type IV, and Type V distributions
- Operating temperature rating of -4° to 104°F (-20°C to 40°C)
- 10kA surge protection standard
- Input voltage of 120-277VAC
- Available in 40W and 85W
- Driver delivers full-range dimming from 0 – 10VDC



5000K

5000K



4127Lm

7358Lm



40W

85W



115

100



OPL

3" & 4" Poles

The OPL are poles designed to fit the Aquila OAL area light fixtures as well as the Pollus OTL Poletop fixture.

- Straight steel construction with 3" round, 4" round, and 4" square options available
- General purpose pole for up to 12' (3" Pole) and up to 25' (4" Poles) mounting heights
- 3" Pole available in lengths of 8', 10', and 12'
- 4" Pole available in lengths of 15' and 25'
- Pole shaft is from weldable grade cold rolled, commercial quality carbon steel tubing conforming to ASTM-A500 grade B 11 gauge
- All welds conform to AWS D1.2 using ER70s-6 electrodes
- Grounding Provision incorporating a tapped 1/2"-13NC hole welded to frame





ARA - 0FL

LED Flood Light

The Ara LED Flood Light offers high performance and clean, uniform light distribution in a compact design. Available in four wattages, Ara features a long-lasting driver with a highly efficient LED engine for precise optical control. The included knuckle mount makes it easy to add accent or general illumination lighting to any exterior environment, including landscapes, display signage, building facades, common areas, pathways, and other open spaces.

- Die-cast aluminum housing routes heat away from electrical components
- Clear, injection-molded acrylic lens creates uniform light distribution
- 4000K and 5000K CCTs
- Available in 15, 50, 75, and 90 watt
- Easy installation with a knuckle mount:
 - 1/2" threaded connector
 - Range of 0° to 90°
- 120-277VAC

CCT			Lm/W
4000K	1464Lm	15W	125
5000K	1475Lm		126
4000K	5457Lm	50W	115
5000K	5563Lm		118
4000K	8326Lm	75W	119
5000K	8579Lm		123
4000K	11059Lm	90W	120
5000K	11603Lm		126



CETUS - ODL

LED Dusk to Dawn

The Cetus LED Dusk to Dawn utilizes a single LED source and provides a light output suitable for general purpose security and area lighting. The Cetus is an economical and efficient lighting solution that includes a photocell and tubular mounting arm. The fixture easily installs on a wall or pole (included).

- Die-cast aluminum housing
- Tubular steel arm (2" diameter), 21" (length)
- Acrylic prismatic lens
- 3000K, 4000K, and 5000K CCTs
- Available in 38 watt
- Photocell included
- Fine-textured grey finish
- 120-277VAC



3000K
4000K
5000K



4188Lm
4343Lm
4503Lm



39W



107
111
115



* Not certified for 3000K



CORVUS - OWG

LED Wallpack

The Corvus LED Wallpack features the classic design of a traditional wallpack with enhanced performance and efficiency. With output up to 120 lumens per watt, the Corvus delivers uniform light distribution with minimized glare and is easy to install on walls or directly to a J-Box with its separable hinged backplate. The Corvus has three knockouts for through-wiring or sensor additions and is an ideal solution for security and perimeter lighting.

- Die-cast aluminum housing
- Three ½" knockouts for conduit feed or sensors
- Toolless, separable hinged backplate for easy installation and maintenance
- Tempered, clear prismatic glass
- 4000K and 5000K CCTs
- Available in 50 and 80 watt
- Photocell optional
- 0-10 VDC dimming on 80 watt
- 120-277VAC



4000K
5000K



5848Lm
5969Lm



50W



86
86

4000K
5000K

9803Lm
9953Lm

80W

116
120

4000K
5000K

14212Lm
14475Lm

120W

122
124



CYGNUS - OWF

LED Full Cut Off Wallpack

The Full Cut Off Cygnus LED Wallpack provides optimal performance and efficiency in a classic, architectural style – ideal for use along perimeters, building entrances, walkways, or for other general lighting purposes. Cygnus delivers uniform light distribution with minimized glare and is easy to install on walls or directly to a J-Box with its separable hinged backplate. Three knockouts allow for through-wiring or sensor additions.

- Die-cast aluminum housing
- Three ½" knockouts for conduit feeder or sensors
- Toolless, separable hinged backplate for easy installation and maintenance
- Clear, injection-molded acrylic lens creates uniform distribution while maximizing lumen output
- Type III distribution precision lens
- 4000K and 5000K CCTs
- Available in 50 and 80 watt
- Photocell optional
- 0-10 VDC dimming on 80 watt
- 120-277VAC



4000K
5000K



5656Lm
5798Lm



50W



122
125

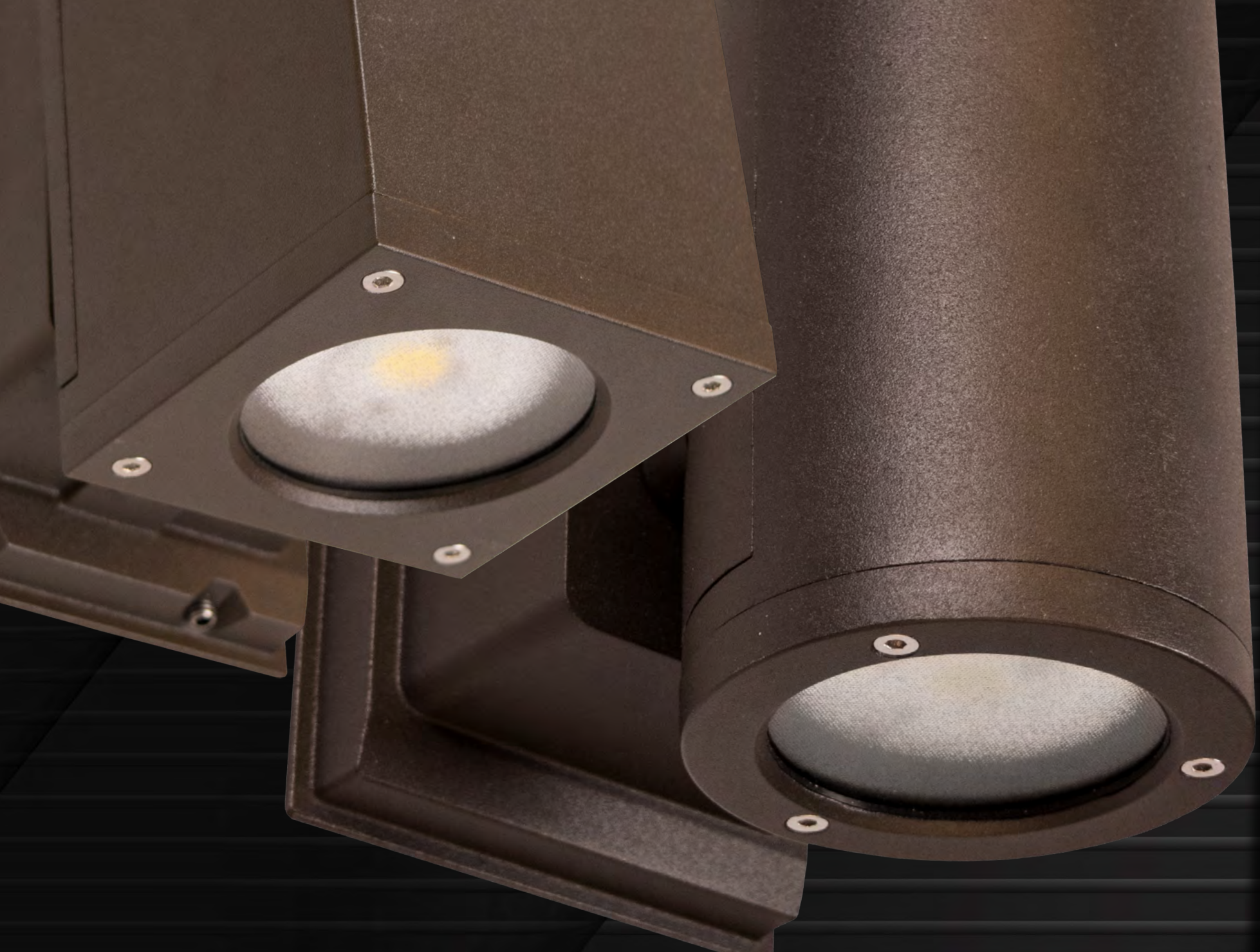
4000K
5000K

8789Lm
9128Lm

80W

110
115





DORADO - OWC

LED Wall Mount Cylinder

The Dorado 4" LED Wall Mount Cylinder delivers optimal performance in an attractive, round or square contemporary design. Ideal for porches, walls, columns, office spaces, restaurants, clubs, walkways and other residential or commercial applications where ambient illumination is desired, the Dorado uses tempered, clear prismatic glass to create uniform down or up/down light distribution free of hot spots or glare. The fixture features a detachable mounting plate for easy mounting to J-Boxes.

- Die-cast aluminum housing with detachable mounting plate
- Easy to use mounting plate allows for quick mounting to J-Boxes
- Tempered, clear prismatic glass creates uniform distribution while maximizing lumen output
- Offered in single and up/down configurations
- 3000K, 4000K, and 5000K CCTs
- Round available in 22 and 35 watt, square available in 22 and 33 watt
- 120-277VAC

	 CCT			
Direct Round	3000K	2258Lm	22W	105
	4000K	2351Lm		110
	5000K	2445Lm		114
Direct Square	3000K	2134Lm		101
	4000K	2290Lm		109
	5000K	2497Lm		118
Direct/Indirect Round	3000K	3222Lm	35W	95
	4000K	3355Lm		99
	5000K	3489Lm		103
Direct/Indirect Square	3000K	3091Lm	33W	92
	4000K	3200Lm		95
	5000K	3489Lm		103



* Only on direct configuration

DORADO - OWC

LED Wall Mount Fan



The Dorado Fan Square LED Wall Mount Cylinder features an attractive, contemporary design while maximizing lumen output. Ideal for porches, walls, columns, office spaces, restaurants, clubs, walkways and other residential or commercial applications where ambient illumination is desired, the Dorado Fan uses convex lenses to create asymmetric up/down fan light distribution. The fixture features a detachable mounting plate for easy mounting to J-Boxes.

- Die-cast aluminum housing with detachable mounting plate
- Easy to use mounting plate allows for quick mounting to J-Boxes
- 1/2" knockout for conduit wiring
- Tempered glass, convex lenses create asymmetric up/down fan distribution
- 3000K, 4000K, and 5000K CCTs
- Available in 36 watt
- 120-277VAC



3000K
4000K
5000K



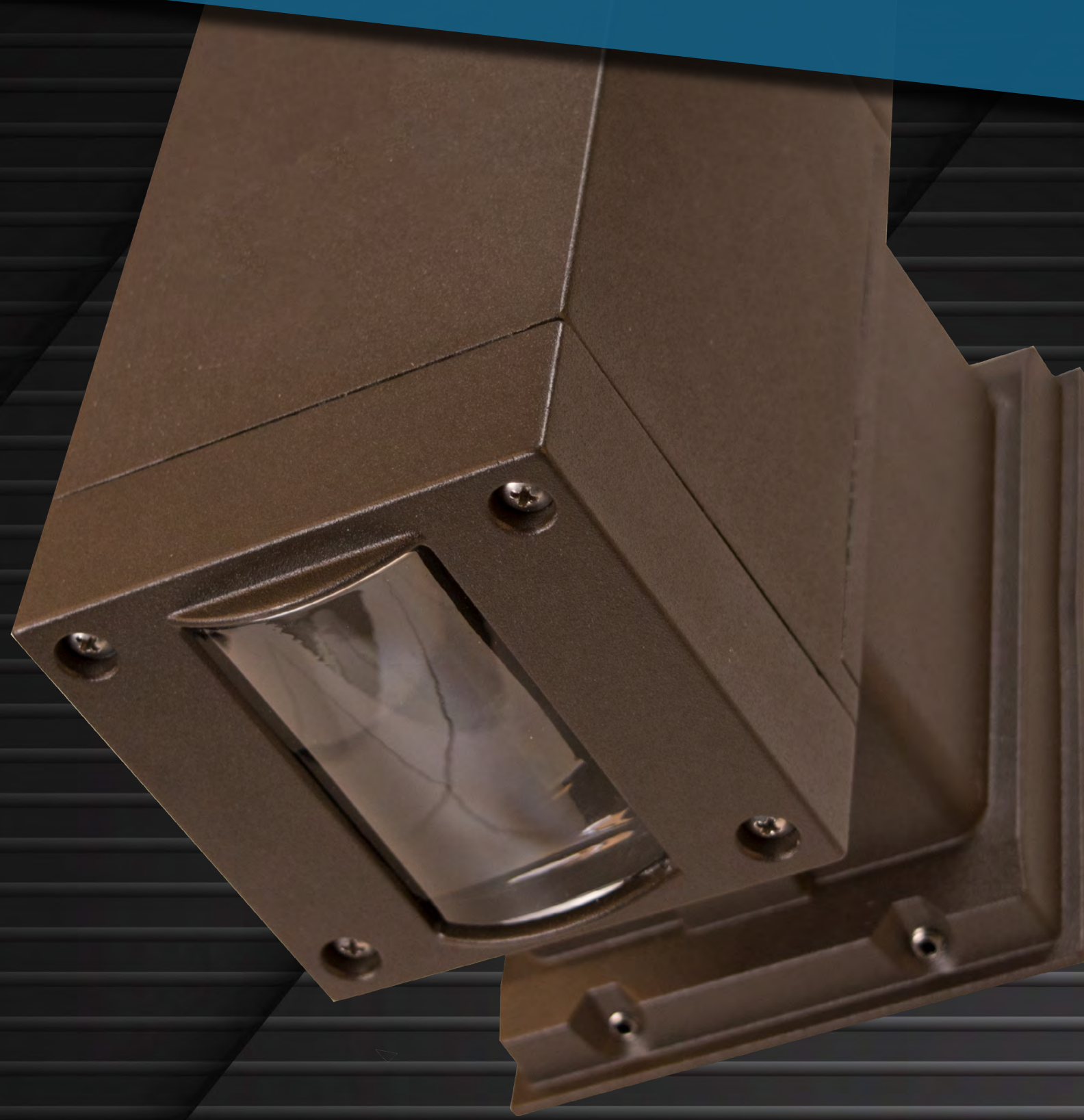
1387Lm
1436Lm
1556Lm



36W



40
42
45



LYRA - OUS

LED Specification Canopy

Delivering maximum lumen output in an attractive and streamlined design, the Lyra LED Specification Canopy utilizes advanced LED technology to provide enhanced, even illumination with less energy. The Lyra is an effective under outdoor canopy lighting solution for exterior ceilings or for parking garages, car ports, covered walkways, or other commercial spaces. Its die-cast aluminum housing with hinged and removable back box and convenient knockouts allow for easy J-Box, surface mount, or pendant installations. The fixture is equipped with an integrated heat sink, a Type V distribution precision lens, and has an optional photocell.

- High-quality, die-cast aluminum housing with integrated heat sink
- Easy to use hinged back box allows for quick installation to J-Boxes
- Four 1/2" knockouts for conduit wiring or sensor additions
- EVA gasket for water-resistant surface mounting
- 4000K and 5000K CCTs
- Available in 45 and 80 watt
- Photocell optional
- 0-10 VDC dimming
- Varied mounting by J-Box, ceiling/conduit, or pendant
- 120-277VAC



CCT	Lm	W	Lm / W
4000K	5529Lm	45W	126
5000K	5460Lm		125
4000K	10456Lm	80W	130
5000K	10282Lm		128



OBELUS - OWR

LED Wallpack

The Obelus LED Wallpack combines a simple rectangular style with top performance and efficiency. The Obelus features a single-piece, die-cast aluminum housing with a ribbed, UV- and fire-resistant lens for even light distribution. It installs easily into a 4/O J-Box and has an optional photocell. The Obelus is recommended for perimeter lighting as well as building entrances, garages, tunnels, and other commercial spaces where general purpose lighting is desired.

- Single-piece, injection-molded lens
- Die-cast aluminum backplate and plastic housing
- UV- and fire-resistant lens
- Clear "ribbed" lens for even light distribution
- 4000K and 5000K CCTs
- Available in 30 watt
- Photocell standard
- 120-277VAC



4000K
5000K



2951Lm
3022Lm



30W



106
108



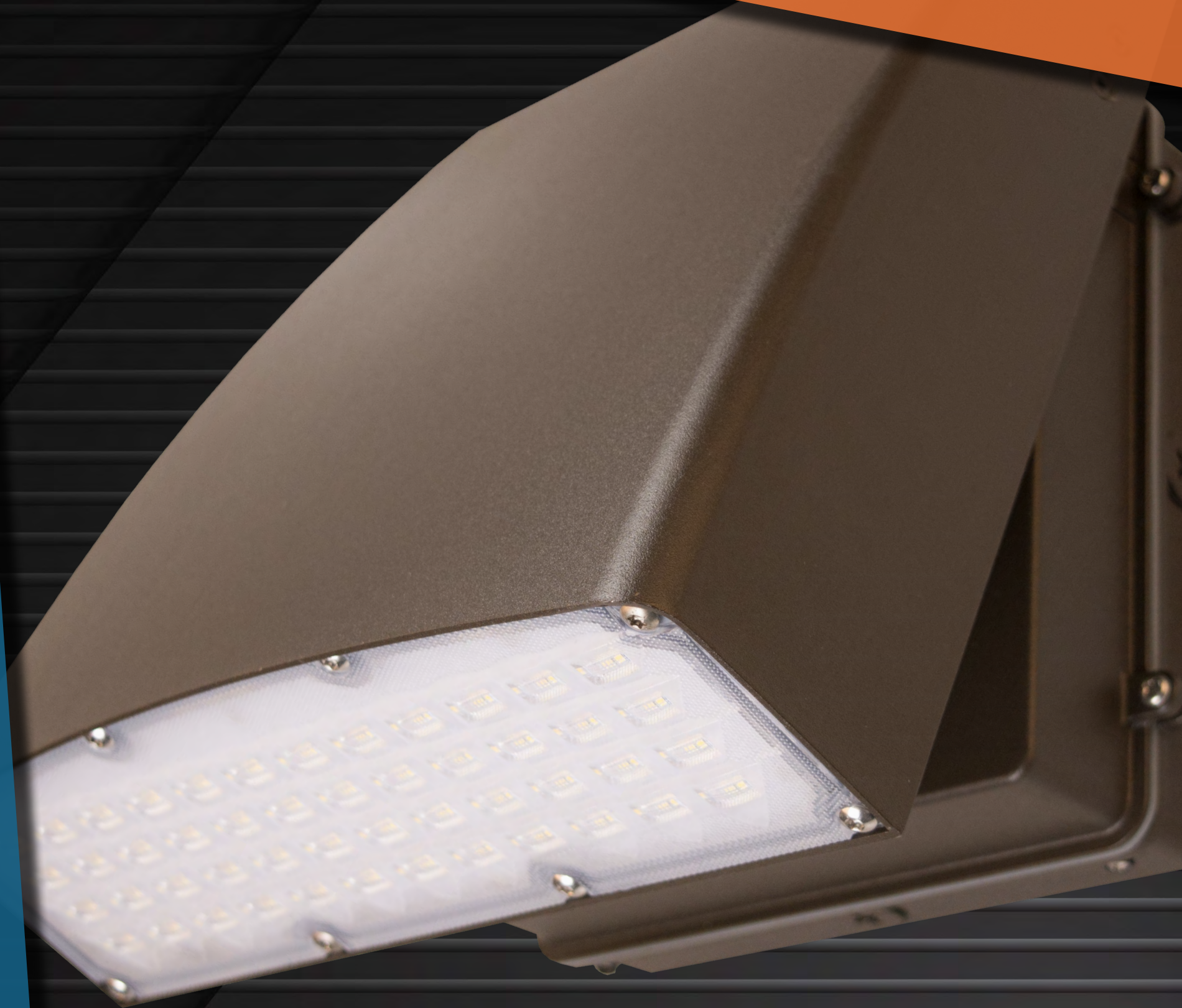
OCTANS - OSA

LED Adjustable Sconce

The Octans LED Adjustable Sconce provides uniform light distribution with optimal output in a compact, seamless design. Using a separable hinged backplate, the Octans is easy to install on walls or directly to a J-Box, and is adjustable from 0 to 90-degrees. It is an economical and efficient replacement for a traditional wall pack, ideal for accent or general purpose exterior lighting. The Octans can also be used as a flood light for certain applications.

- Die-cast aluminum housing
- Toolless, separable hinged backplate for easy installation and maintenance
- Toolless, adjustable range of 0° to 90°
- UV- and fire-resistant lens
- Clear, injection-molded acrylic lens creates uniform light distribution while maximizing lumen output
- 4000K and 5000K CCTs
- Available in 30, 50, 80, and 120 watt
- Photocell optional
- 0-10 VDC dimming
- Integrated level included in back plate
- 120-277VAC

CCT	Lm	W	Lm/W
4000K	3239Lm	30W	116
5000K	3298Lm		118
4000K	5193Lm	50W	108
5000K	5287Lm		110
4000K	9056Lm	80W	113
5000K	9241Lm		115
4000K	13796Lm	120W	111
5000K	14227Lm		115





TUCANA - OGS

LED Garage Light

The Tucana LED Garage Light incorporates the newest LED technology to provide optimal performance with even light distribution. Its die-cast aluminum housing with hinged and removable back box and convenient knockouts allow for easy J-Box, surface mount, or pendant installations. The Tucana is ideal for use in parking garages or structures, car ports, covered walkways, stairwells, work bays, and other commercial spaces.

- High-quality, die-cast aluminum housing with integrated heat sink
- Easy to use hinged back box allows for quick installation to J-Boxes
- Four 1/2" knockouts for conduit wiring or sensor additions
- EVA gasket for water-resistant surface mounting
- Four frosted polycarbonate lenses angled to produce an even light distribution
- 4000K and 5000K CCTs
- Available in 45 and 85 watt
- Photocell and motion sensor options
- Varied mounting by J-Box, ceiling/conduit, or pendant
- 120-277VAC



4000K
5000K



4473Lm
4515Lm



45W



101
102

4000K
5000K

8331Lm
8390Lm

85W

100
101



VELA - OUC

LED Canopy

The Vela LED Canopy offers high performance in an economical and practical design, and achieves even light distribution using a prismatic, frosted lens that is UV- and fire-resistant. Its die-cast aluminum housing has convenient knockouts for easy J-Box, surface mount, or pendant installations. The Vela is an efficient under outdoor canopy for exterior ceilings or for parking garages, car ports, covered walkways, or other commercial spaces.

- High-quality, die-cast aluminum housing with integrated heat sink
- Easy to use mounting brackets allows for quick installations to J-Boxes
- Four 1/2" knockouts for conduit wiring or sensor additions
- High performance, prismatic lens that is frosted for even distribution
- Type V distribution precision lens
- 4000K and 5000K CCTs
- Available in 45 and 80 watt
- Fine-textured bronze or white finish
- Varied mounting by J-Box, ceiling/conduit, or pendant
- Photocell and motion sensor options
- 120-277VAC



4000K
5000K



4948Lm
4948Lm



45W



111
111

4000K
5000K

9483Lm
9548Lm

85W

120
120



PYXIS - OBL

LED Bollard

Pyxis features unique and attractive parabolic cone and louvered designs, each with back light directional shields, and delivers maximum lumen output to create the perfect lighting for courtyards and walkways. Available in bronze finish with a 5000K color temperature, Pyxis has a 7" diameter and stands 43" high. The LED bollard includes 10kA surge protection and is dimmable from 0-10VDC.

- Thermally-protected, high-efficiency driver
- Operating temperature rating of -4° to 104°F (-20°C to 40°C)
- Input voltage of 120-277VAC
- Driver delivers full-range dimming from 0 – 10VDC
- Standard with 10K surge protector
- 3-year limited system warranty for louvered fixture
- 5-year limited system warranty standard for parabolic cone fixture

Cone



5000K



2803Lm



27W



101

Louver



5000K



1726Lm



27W



62



* Louver Only



NICOR[®]
OUTDOOR

Warehouse Locations

Albuquerque, NM
Atlanta, GA
Detroit, MI
Hayward, CA
Indianapolis, IN

Miami, FL
San Antonio, TX
Syracuse, NY
Van Nuys, CA
Wood Dale, IL

T 800.821.6283

F 800.892.8393

www.nicorlighting.com
www.nicoroutdoor.com

2200 Midtown Pl. NE
Albuquerque, NM 87107 USA



LIT-OUTDOOR

©2018 NICOR® • ALL RIGHTS RESERVED



NICOR[®]
OUTDOOR