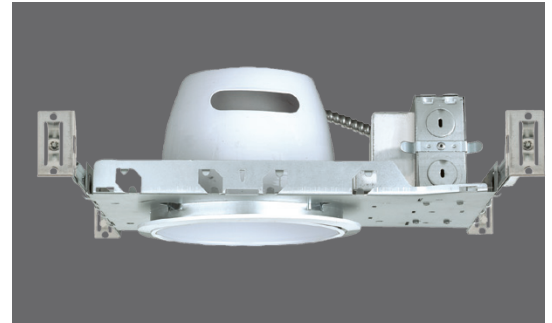


Project *Comments*

Catalog # *Prepared By*

Type *Date*



DESCRIPTION

- Suitable for new construction in residential and commercial applications.
- NON-IC. Insulation must be kept a minimum of 3" from housing.
- Use two 13W double twin tubes; G24Q-1 (not included).

FRAME-IN

- 120-277V Universal input electronic ballast.
- Commercial frame allows direct installation to wood joist or steel stud constructions.

JUNCTION BOX

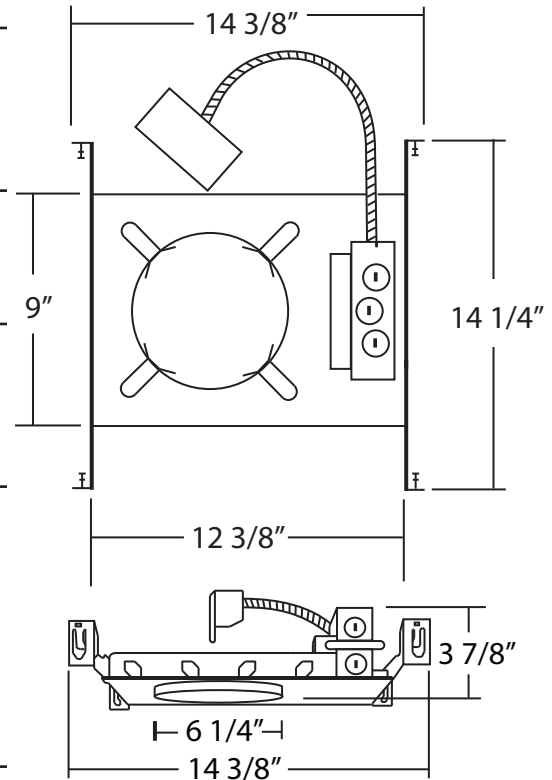
- Listed for through branch circuit wiring and includes several 3/4" knockouts. Four pry-outs with integral strain relief simplify Romex installation.
- Supplied with three IDEAL® push-in wire connectors.

HANGER BARS

- Heavy-gauge NICOR captive hanger bars provide greater stability, allowing housing to be positioned at any point within a 24" joist span, then locked in place with set screws. Unique hanger bar lip design helps align can to joist. Four double-headed captive nails provide for ease of installation.
- Bars can be repositioned 90° on plaster frame without tools.
- Bars fit onto T-bar spine for quick alignment and can be permanently secured.
- Score lines allow bars to be shortened without tools to accommodate a 12" joist span.

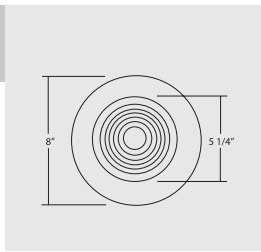
LISTINGS

- UL damp location
- UL feed-through
- CUL

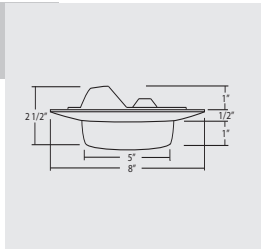




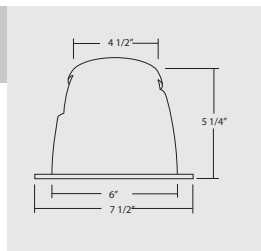
Order No	Description	Maximum Lamp Rating
	Lexan Shower Fresnel Lens	OD: 8" Wet Location Rated
17502BZ	Bronze (shown)	
17502R	White w/ Reflector	
17502OB	Oil-Rubbed Bronze	
17502	White w/ Metal Trim Ring	
17572WH	White w/ Plastic Trim Ring	



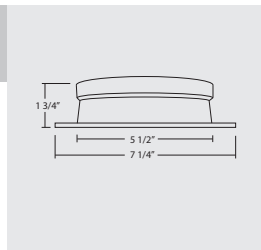
Order No	Description	Maximum Lamp Rating
	Lexan Drop Opal	OD: 8" Wet Location Rated
17509R	White w/ Reflector	
17509	White w/ Metal Trim Ring (shown)	
17579WH	White w/ Plastic Trim Ring	



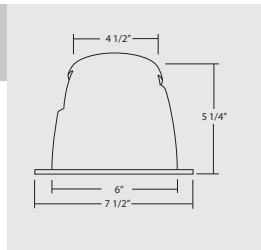
Order No	Description	Maximum Lamp Rating
17600	Frame Insert	OD: 7 & 1/2" Requires Trim



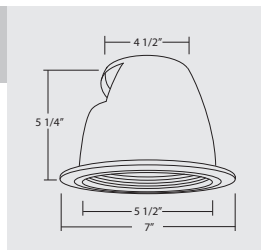
Order No	Description	Maximum Lamp Rating
17604	Reflector Fresnel Lens	OD: 7 & 1/4" Also Requires 17600 Frame Insert



Order No	Description	Maximum Lamp Rating
	Reflector	OD: 7 & 1/2"
17607BK	Black (shown)	
17607CL	Clear	
17607GD	Gold	
17607WH	White	



Order No	Description	Maximum Lamp Rating
	Baffle Albalite Lens	OD: 7"
17620BK	Black (shown)	
17620WH	Clear	



	Order No	Description	Maximum Lamp Rating	
	17623BK 17623WH	Lexan Shower Fresnel Lens Black (shown) White	OD: 7&3/8"	
	Order No	Description	Maximum Lamp Rating	
	17627BK 17627WH	Baffle Wall Wash Black (shown) White	OD: 7&3/8"	
	Order No	Description	Maximum Lamp Rating	
	17638CL	Frame Insert Clear (shown)	OD: 7&3/8"	
	Order No	Description	Maximum Lamp Rating	
	17644CL 17644GD	Reflector Clear Gold (shown)	OD: 7&3/8"	
	Order No	Description	Maximum Lamp Rating	
	17645CL 17645GD	Reflector Louver Clear (shown) Gold	OD: 7&3/8"	
	Order No	Description	Maximum Lamp Rating	
	17660BK 17660WH	Baffle Drop Opal Black White (shown)	OD: 7&1/4"	
	Order No	Description	Maximum Lamp Rating	
	17670BK 17670WH	Reflector Lifted Glass Black White (shown)	OD: 7&3/8"	